

HAUTE MONTAGNE

PART OF  
LE COLLECTIONIST

SUPER YACHTS IN THE SNOW

# ALPACA

---

## MÉRIBEL

# ALPACA

◇  
MÉRIBEL



◇ Méribel, France

◇ Bar

◇ 930 m2 of residence

◇ Climbing Wall

◇ Sleeps 12

◇ Dedicated cinema room

◇ Wellness Spa

◇ Games room







CHALET ALPACA IS A SPECTACULAR PRIVATE CHALET IN MÉRIBEL, TROIS VALLÉES.  
THIS ENVIABLE PROPERTY IS ONE OF MÉRIBEL'S LARGEST AND MOST DESIRED  
RESIDENCES.



Newly completed in 2017, the chalet is an impressive addition to Méribel's increasing luxury chalet collection. Each area has been meticulously designed and crafted, creating a chic and luxurious private home. In 2017, this extraordinary chalet was awarded World's Best New Chalet at the World Ski Awards.











# CHALET ALPACA IS A LUXURIOUS, MODERN MOUNTAIN HOME. WITH OUTSTANDING HEALTH & WELLNESS FACILITIES, INTELLIGENT LIVING SPACE AND SUMPTUOUS BEDROOMS, EXPERIENCE TRUE LUXURY IN ONE OF FRANCE'S LARGEST AND MOST BEAUTIFUL PRIVATE CHALETs.



The interior is incredibly spacious, bathed in natural light with heavenly views of the valley from the floor-to-ceiling windows. Using a perfectly blended mix of natural materials and modern bespoke design and furnishings, the interior creates a welcoming, cohesive atmosphere.

The chalet comfortably sleeps 12 in six thoughtfully-appointed en-suite bedrooms, which all have their own individual design and style. Each room is furnished to the same high standard with luxury linens and a spacious bathroom and each one has either its own balcony or terrace.

The entertaining spaces are set out over three spectacular floors. On the first floor, at the heart of the chalet, is the magnificent and spacious living room and bar area, with double-height ceiling, an open fireplace, and full-height windows flooding the room in the warm winter sunshine and offering breathtaking views of the mountains.

There is an impressive dining area which makes for the perfect entertaining space and the separate kitchen allows you to enjoy meals in relaxed private surroundings. The living and dining areas both have access to the large terrace and south-facing garden which provide a sublime, tranquil setting. The extensive terraces and balconies wrap around the chalet to reveal more of the astounding panorama.

Furnished as thoughtfully as the interior, you can enjoy this amazing outdoor space by relaxing in the beautiful copper hot tub, swimming in the heated 'endless' pool, or watching the glowing embers in the fire-pit.

Tucked away on this floor are three bedrooms, all with en-suite facilities, beautiful views, and private balconies. The first is a king-sized bedroom and the second and third bedrooms can be prepared either as doubles or twins. A guest restroom can also be found on this floor.

The top floor is a haven of relaxation. It is home to the library, offering a cosy spot to relax and unwind with a good book in front of a roaring fire, and the master bedroom suite. The stunning master suite has a wood-burning stove, private balcony boasting panoramic views, spacious dressing room, and plush en-suite bathroom. The bathroom has an exquisite copper bath with views to Saulire and a huge rain shower.

The upper ground floor of the chalet has a fabulous cinema and games room, a spa with a hammam, sauna, rain shower, and a secluded massage room. The unique sports room is home to its very own indoor climbing wall.

For guests wishing to keep in shape, there is a gym on the lower ground floor. In addition, there is a children's bunk room, with separate bathroom and twin/double bedroom with en-suite shower room. These rooms can be closed off as a self-contained suite.

Additionally, there is a self-contained staff flat, with separate access, which houses two chalet staff on the lower ground floor of the chalet.









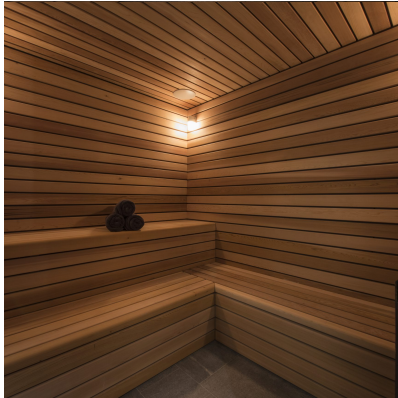


# FACILITIES



## ENTERTAINMENT

Boasting a bar, a dedicated cinema room, and a games room with a pool table, Alpaca offers a plethora of options for entertainment. Be it relaxing with your family after a day on the mountain or entertaining friends after dinner, there is something for everyone here.



## SPA & POOL

Options for relaxation are endless at Alpaca. Beautifully finished facilities include a gym, hammam & sauna, massage treatment room, outdoor hot tub & heated swimming pool. The perfect way to unwind after a ski day.



## CLIMBING WALL

A unique and luxurious additional facility at Alpaca is the wonderful indoor climbing wall. Enjoy a variety of route options and a fun, challenging workout for the whole body!











# LOCATION

## PARKING

Indoor parking: 3

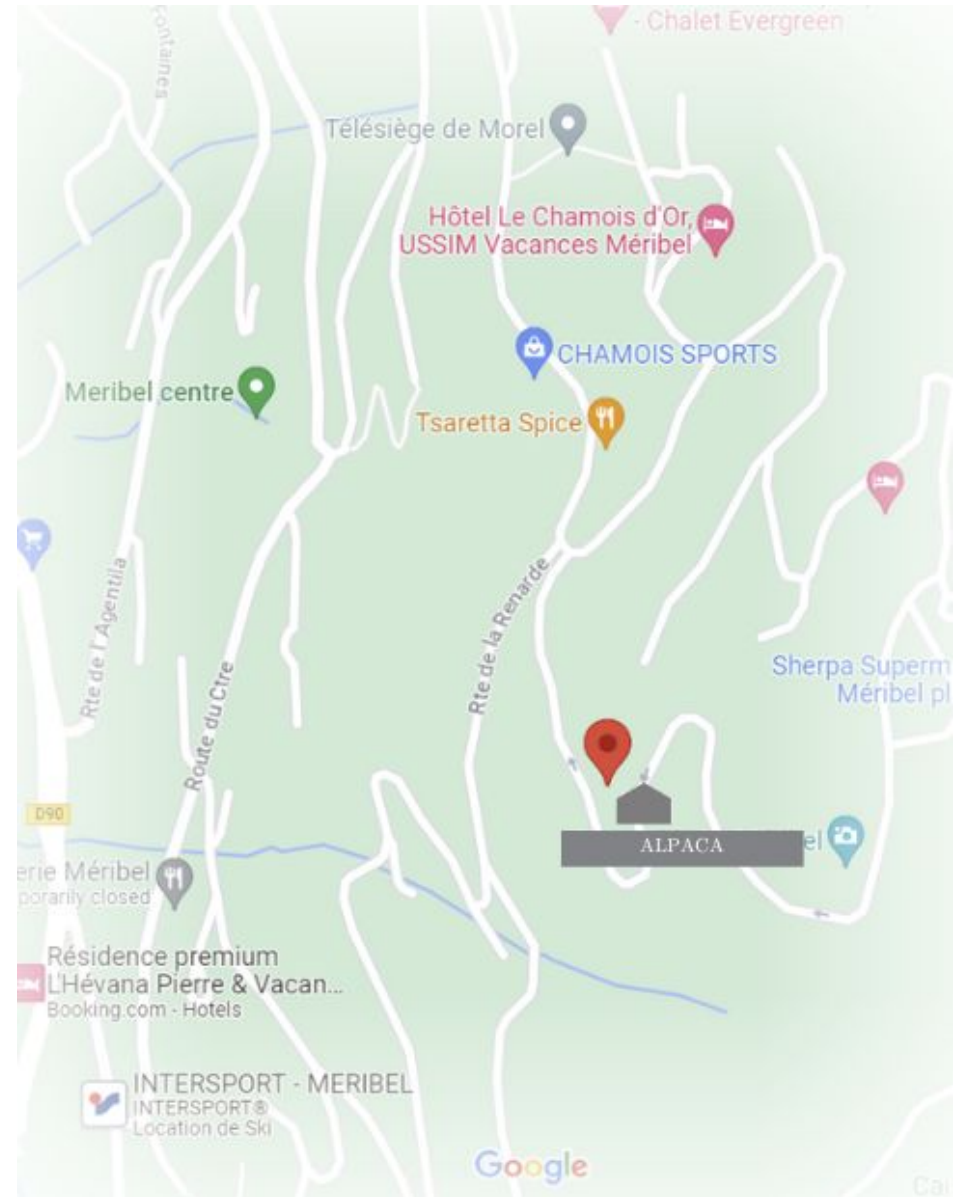
## LOCATION

Nestled among the woodland in an exclusive area, the chalet sits a 5-minute drive from both the nearest ski lift and the center of town.

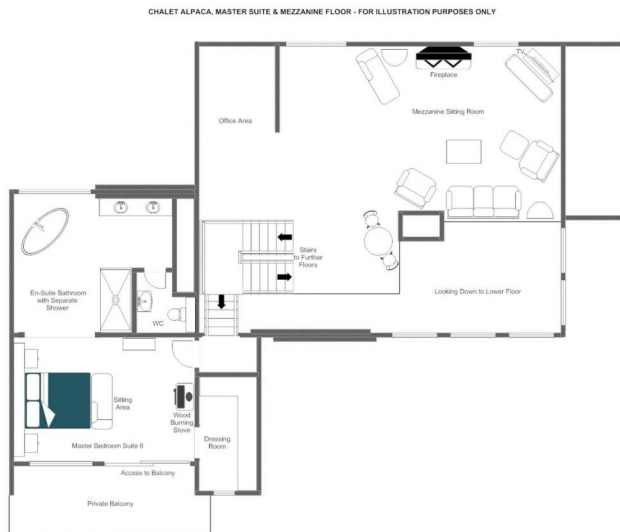
## PROXIMITY

Chaudanne lift station - 5-minute chauffeured drive

Village centre - 5-minute chauffeured drive



# LAYOUT

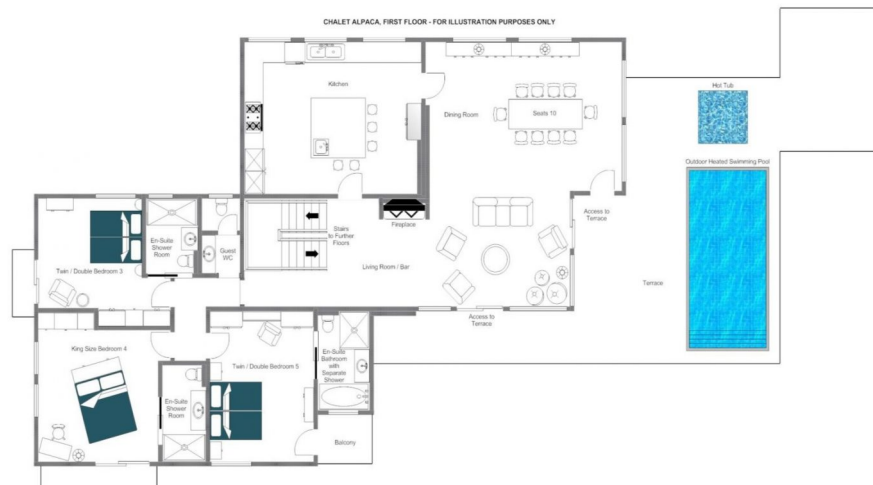


## TOP FLOOR

- Master bedroom suite (sleeps 2, en-suite bathroom with separate shower, sitting area with wood burner, dressing room, private balcony)
- Second living area with open fire, library, and office



# LAYOUT

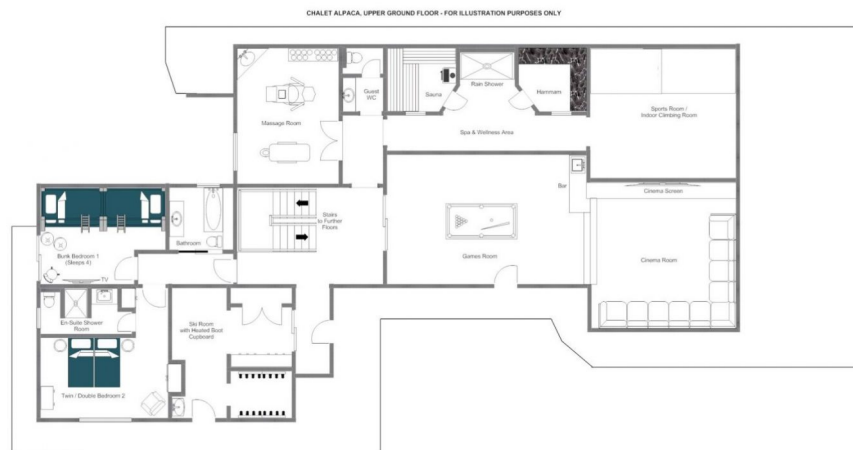


## FIRST FLOOR

- Living area with open fire
  - Dining area
  - Private kitchen
- Twin/double bedroom (sleeps 2, en-suite shower room, balcony)
- Twin/double bedroom (sleeps 2, en-suite bathroom, separate shower, private balcony)
- King-size bedroom (sleeps 2, en-suite shower room, desk, private balcony)
  - Guest restroom
- Large terrace with outdoor copper hot tub and outdoor heated swimming pool



# LAYOUT



## UPPER GROUND FLOOR

- Cinema and games room with pinball machine, pool table and bar area
- Quad bunk bedroom (sleeps 4, TV, terrace access)
  - Separate bathroom and shower room
- Twin/double bedroom (sleeps 2, en-suite shower room, terrace access)
  - Indoor climbing room
- Spa and wellness area
  - Sauna
  - Hammam
  - Rain shower
  - Massage room
  - Guest restroom
- Ski room with heated boot warmers



# LAYOUT



## LOWER GROUND FLOOR

- Private gym
- Wine cave
- Laundry room
- Garage
- Self-contained staff apartment with separate entrance (sleeps 2)













ALPACA



MÉRIBEL