

APARTMENT CHARTREUSE

FRANCE

VAL D'ISÈRE

APARTMENT CHARTREUSE

VAL D'ISÈRE | Sleeps 8



REDEFINING THE LUXURY CHALET EXPERIENCE

A STUNNING SKI-IN SKI-OUT LUXURY ALPINE
APARTMENT, sleeping eight guests in four stylish
bedrooms.

DESCRIPTION



REDEFINING THE LUXURY CHALET EXPERIENCE

A super stylish and perfectly positioned duplex penthouse apartment in Val d'Isere - Apartment Chartreuse is laid out over two floors, sleeping eight guests, with every aspect of the property carefully considered and crafted.

Modern alpine furniture and finishes are seamlessly combined with natural materials to create a sumptuous alpine home. The perfectly positioned apartment allows you to ski-out in the morning, with a piste just behind the property and ski-in after a day on the slopes.

Entering the apartment on the first floor you will find the main sleeping floor, with three bedrooms. The master double bedroom is situated at the end of the hallway and has an open plan layout and is decorated in neutral hues, with a bank of windows flooding the room with warm winter light. A beautiful free standing bath sits in the middle of the room, where you can sit and soak for hours, there is also a separate shower and WC.

There are a further two bedrooms on this floor, both twin/double bedrooms, one with an en-suite shower room and the other with en-suite bathroom. When the beds are configured as twins there is a limited space between the beds. All bedrooms on this floor have TVs and access to a wrap around balcony. There is also a small laundry room on this floor, should you need it during your stay.

The staircase leads up to the top floor and this is home to the stunning open plan kitchen, dining and living area. With double height ceiling, exposed beams and windows framing the fabulous views, giving you 180 degree panoramic views on the dramatic mountains, this room has real wow factor.

An impressive stone fireplace ensures the living area has that relaxing and soothing ambiance. Decorated in a modern elegant style with dramatic pendant lighting over the living area and dining table, the apartment delivers on every level. Both the living area and dining table can comfortably seat eight guests. The spacious, well well-equipped kitchen looks over the dining area and there is a breakfast bar where you can perch and keep whoever is on dinner duty company. Tucked behind the staircase is a cosy TV snug, perfect for children to watch a movie while you entertain guests.

The fourth and final twin/double bedroom is also located on this floor, tucked up in the eaves and with views of the mountains from the bed, this cosy room will leave you rested and ready for a day of skiing. When the bed is configured as a twin there is a limited space between the beds. The bedroom has an en-suite shower room as well with a separate shared WC. There is also a guest WC on this floor.

There is a shared ski room on the ground floor of the building where you can store your skis and boots.

FACILITIES



REDEFINING THE LUXURY CHALET EXPERIENCE

INTERIOR

- Sleeps 8
- 160 Square metres
- 4 Bedrooms
- 7 Individual beds
- 4 Bathrooms
- 1 Additional WCs

APPLIANCES

- Bluetooth speaker
- Smart TV
- Sonos
- Wifi

WELLNESS AND RELAXATION

- Balcony

ENTERTAINMENT

- TV snug

ADDITIONAL

- Cot/high chair available
- Family-friendly chalets
- Private laundry facilities
- Shared ski locker
- Ski-in & Ski-out
- Wood burning fireplace
- Indoor Parking: 2



LAYOUT



REDEFINING THE LUXURY CHALET EXPERIENCE

TOP FLOOR

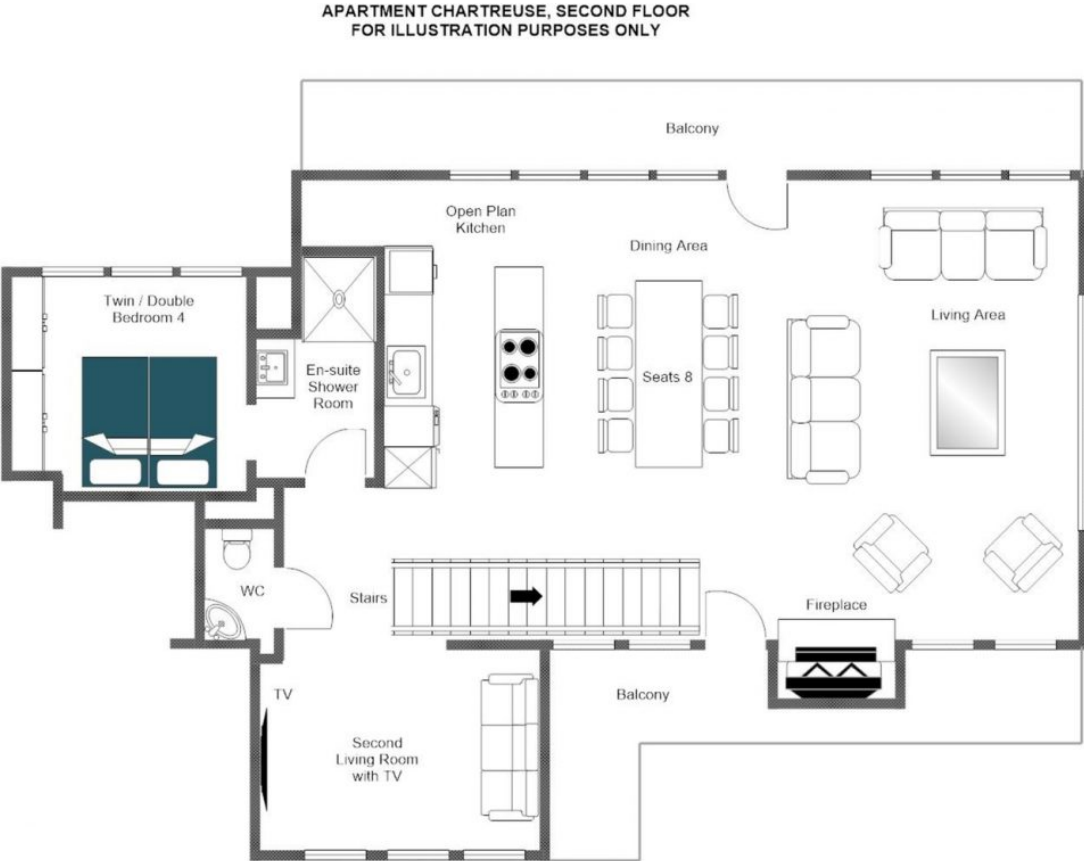
- Open plan kitchen, dining and living area
- TV room
- 1 Twin/Double bedroom (en-suite shower room and separate shared WC)
- Guest WC

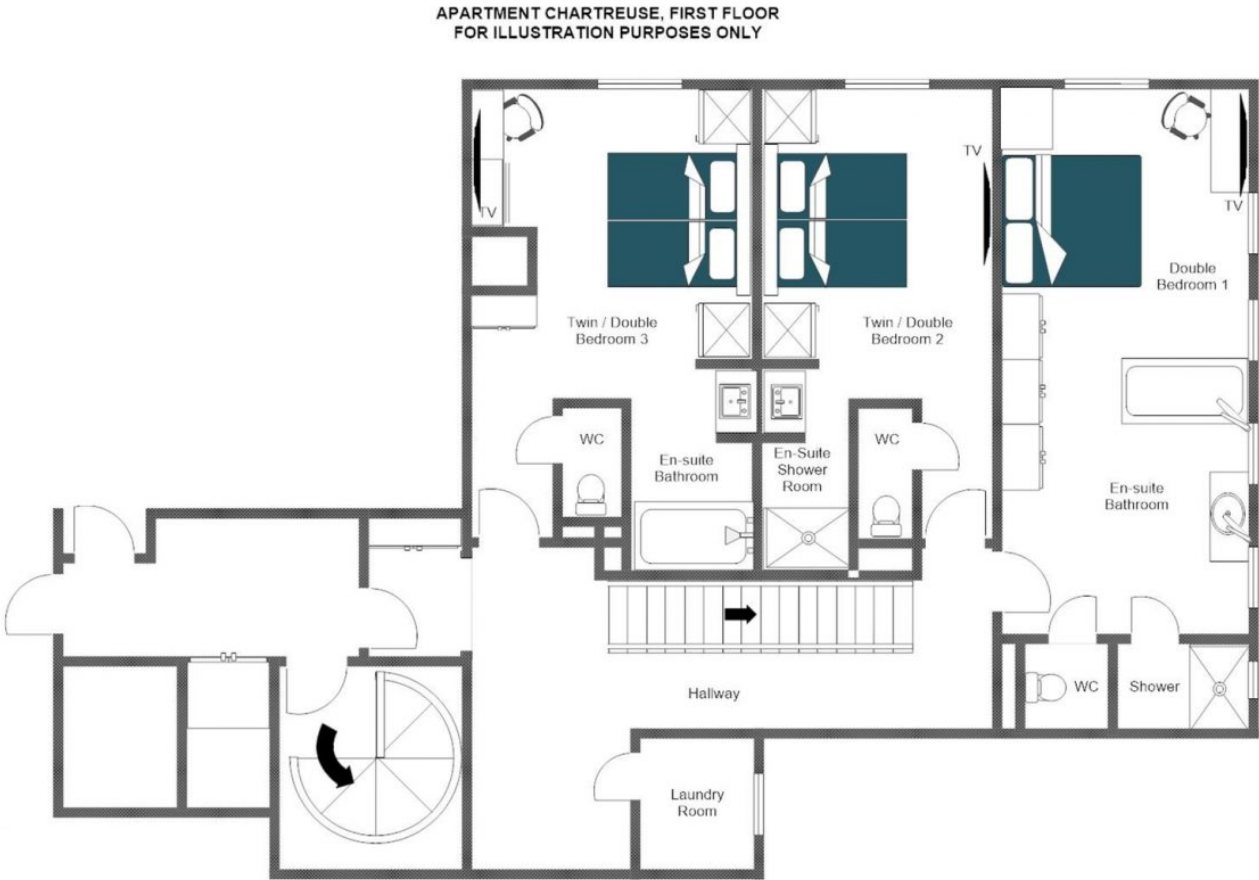
FIRST FLOOR

- 1 Master double/twin bedroom (en-suite bathroom, separate shower and separate private WC)
- 1 Twin/Double bedroom (en-suite bathroom and separate private WC)
- 1 Twin/Double bedroom (en-suite shower room and separate private WC)
- Laundry room









LOCATION



Apartment Chartreuse is located behind the historic centre of Val d'Isère, only a short walk from the centre and the Solaise lift station. It is also possible to ski-in and ski-out of the apartment, with a piste running behind the apartment.

PROXIMITY

Solaise ski lift – 5-minute walk

Village centre – 3-minute drive

GOOGLE CO-ORDINATES

45.446084, 6.984991







REDEFINING THE LUXURY CHALET EXPERIENCE



bramble
ski

PART OF
LE COLLECTIONIST