

bramble  
ski

PART OF  
LE COLLECTIONIST

REDEFINING THE LUXURY CHALET EXPERIENCE

bramble  
residences

# BRUNNENHOF 8

---

AUSTRIA

## LECH

# BRUNNENHOF 8

LECH | Sleeps 4+1 spa



REDEFINING THE LUXURY CHALET EXPERIENCE

BRUNNENHOF 8 is a beautiful, two bedroom apartment  
sleeping up to five guests in luxury and style



# DESCRIPTION



REDEFINING THE LUXURY CHALET EXPERIENCE

Introducing the newly completed Brunnenhof Residence; one of Lech's most exciting new developments for the 2020/21 season. The Brunnenhof apartments will be Bramble Ski's latest addition to the residence portfolio in the world-renowned resort of Lech. The building has been completely renovated to the highest standard and is home to 14 beautiful apartments. This unique mountain residence offers guests luxury alpine living at its best with state-of-the-art spa facilities and incredible, mountain views throughout.

Brunnenhof 8 is a beautiful two-bedroom apartment which has been finished to the highest standard. The owner has carefully created a haven of tranquillity combined with luxury furnishings ensuring maximum relaxation from this stunning mountain retreat.

Sleeping four adults and one child in two large bedrooms, this second floor apartment is ideally located only a short stroll from the ski lift and centre of the village. Lech is a charismatic village which safeguards its traditions and has a timeless charm and sophistication, not to mention, sublime skiing.

This mountain retreat is the ideal base for families with the closest lift, the Schlosskopf chairlift, only a six-minute walk away.

Luxury linens, soft tones and meticulous attention to detail has ensured a stylish and comfortable atmosphere throughout. With floor to ceiling windows, natural light floods through the apartment. The apartment is spread over one elegant floor. The open plan living, dining and kitchen is the ideal arrangement for social evenings around the wide dinner table or relaxing with your favourite après ski drink.

The dining table comfortably sits ten guests and has easy access to the open plan kitchen which has everything you need to make yourself at home in the mountains. Enjoy dining in or if you prefer, have a drink on the terrace before experiencing one of Lech's finest restaurants.

The living area has a large comfy sofa, and chairs for up to six people. Centred around the fireplace, and surrounded by breath-taking views, this makes the perfect spot to curl up and relax whilst it is snowing outside.

Decorated in tranquil, muted tones throughout, the bedrooms will ensure a good night's sleep is had by all.

The beautiful master bedroom has a large walk in wardrobe, and French doors lead out to an oversized terrace, offering fantastic views and providing plenty of natural light. The master bedroom has a large en-suite bathroom with separate shower. There is a further, large double bedroom across the hall, and which has an adjacent shower room. In the hallway there is a children's niche bed which provides a cosy spot should guests be requiring an additional bed.

Guests have access to the exclusive spa facilities making this one of Lech's most sought-after residences. An indoor swimming pool, spa, hammam, sauna and treatment room provide the ultimate in relaxation after a hard day on the slopes.

Brunnenhof 8 is ideally located only a ten-minute walk from the centre of the village and a six-minute walk from the nearest lift. The apartment comes with one parking space.

The apartment can be taken on a self-catered, bed & breakfast or accommodation only basis, benefiting from Bramble Ski's renowned service throughout your stay.



# FACILITIES



REDEFINING THE LUXURY CHALET EXPERIENCE



## INTERIOR

- Sleeps 4 + 1
- 94 Square metres
- 2 Bedrooms
- 4 Individual beds
- 2 Bathrooms
- 10 Dining table seats
- 6 Living area seats

## APPLIANCES

- Wifi

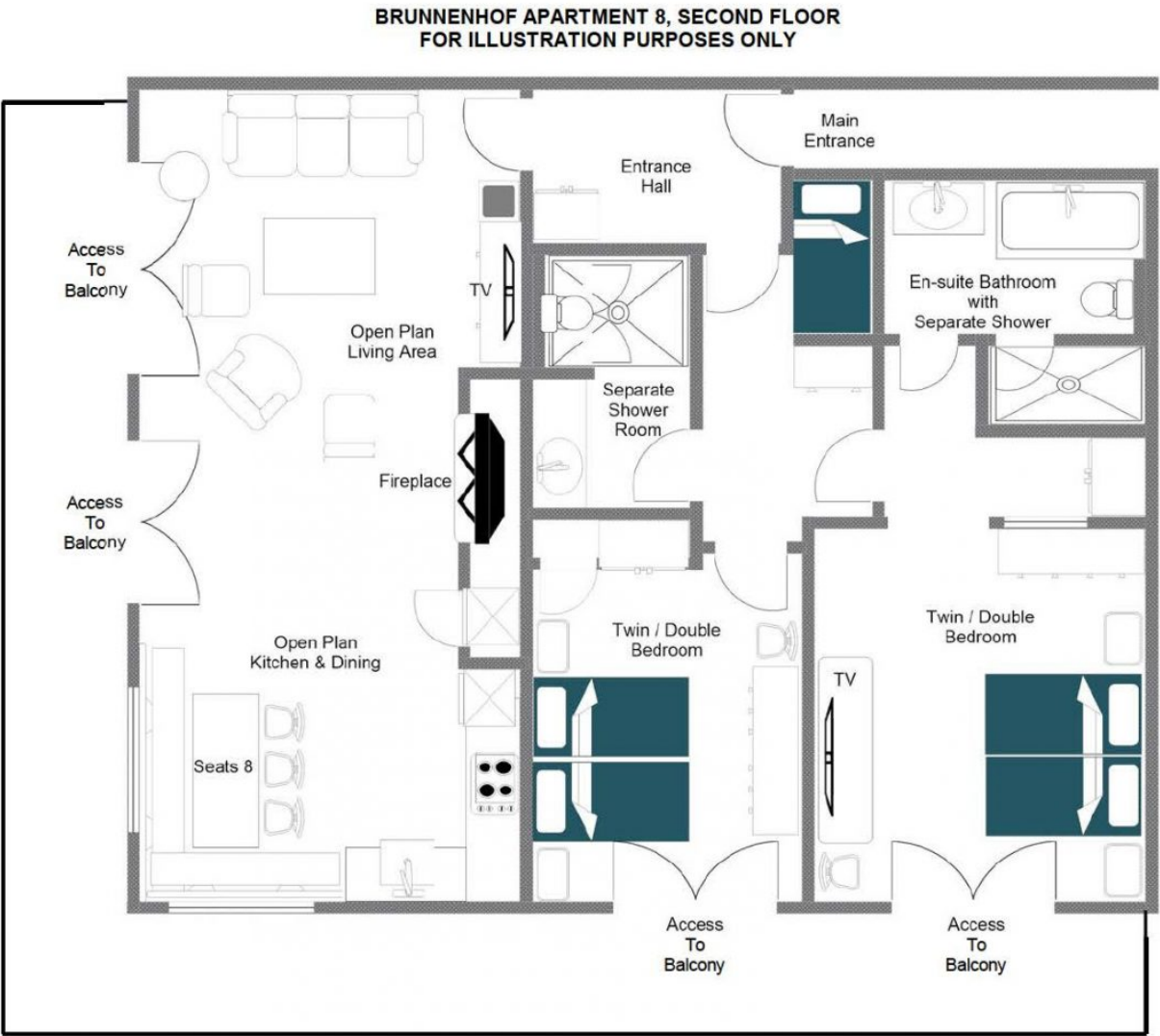
## WELLNESS AND RELAXATION

- Shared access to Hammam
- Shared access to pool
- Shared access to sauna
- Spa

## ADDITIONAL

- Cot/high chair available
- Family-friendly chalets
- Shared laundry facilities
- Shared ski locker







## SECOND FLOOR

- Open plan living room, dining room and kitchen
- 1 Twin/double bedroom (en-suite bathroom with separate shower and TV)
- 1 Twin/double bedroom (separate shower room)









# LOCATION





## PROXIMITY

Schlosskopf chairlift - 6-minute walk  
Schleggelkopf chairlift - 12-minute walk

Village centre - 10-minute walk or a 3-minute drive

## GOOGLE CO-ORDINATES

47.215991, 10.148279











bramble  
ski

PART OF  
LE COLLECTIONIST