

CHALET 1855

FRANCE

VAL D'ISÈRE

CHALET 1855

VAL D'ISÈRE | Sleeps 8+4 spa



REDEFINING THE LUXURY CHALET EXPERIENCE

CHALET 1855 is an Alpine Chic chalet with everything you could wish for when staying in the French Alps

DESCRIPTION



REDEFINING THE LUXURY CHALET EXPERIENCE

Chalet 1855 stands as a stunning newly built chalet, making a grand entrance onto the Val d'Isère scene, sure to leave a lasting impression. Welcoming 8+4 guests across five floors, nestled in the exclusive enclave of "Le Bosset," this retreat is mere minutes from both the main lift station and the town centre. Chalet 1855 is directly attached to a neighbouring chalet. The main living area on the top floor is bathed in natural light during the day, courtesy of the chalet's high double-vaulted ceilings, large floor-to-ceiling windows, and a triple north, west, and south-facing aspect. As daylight fades, sink into the inviting sofas, accented by furs and designer furnishings, enveloped in the warmth of the wood-burning fireplace. A statement dining table seating ten overlooks the mountains, its ambience further enhanced by the soft glow of evening light. The fully equipped open-plan kitchen, seamlessly integrated with an island, adds to the sociable aspect of this space.

Moving down, the third floor reveals a double master bedroom with an en-suite bathroom with separate shower and a TV. Two additional double bedrooms, each with en-suite shower rooms and TVs, as well as a guest WC, complete this floor. The bedrooms, designed with a neutral colour palette and prominent wood finishes, evoke an alpine-chic chalet ambience.

The second floor is dedicated to indulgence, featuring a fully equipped spa with an indoor hot tub, sauna, hammam, and an enticing indoor swimming pool. A massage room awaits for rejuvenating in-house treatments. A double bedroom with an en-suite shower room and TV completes this floor's luxurious offerings.

On the first floor, discover a cosy quad bunk bedroom with en-suite bathroom, twin sinks and a separate shower, please note this bedroom has no window or natural light. A dedicated cinema room with a bar for cosy movie nights, as well as a laundry room, office, and a snug TV room, complete this floor.

Finally, the ground floor houses the boot room and provides access to a shared garage with parking for one car, additionally, you will have access to an outdoor parking space.

Please note there are buildings under construction in the plots neighbouring Chalet 1855.

FACILITIES



REDEFINING THE LUXURY CHALET EXPERIENCE

INTERIOR

- Sleeps 8 + 4
- 315 Square metres
- 5 Bedrooms
- 5 Bathrooms
- 1 Additional WCs
- 10 Dining table seats
- 8 Living area seats

APPLIANCES

- TV
- Wifi

WELLNESS AND RELAXATION

- Balcony
- Hammam/steam room
- Indoor hot tub
- Indoor pool
- Massage treatment room
- Relaxation Space
- Sauna
- Spa

ENTERTAINMENT

- Dedicated cinema room
- TV snug

ADDITIONAL

- Cot/high chair available
- Family-friendly chalets
- New to Bramble Ski
- Private laundry facilities
- Private ski room
- Wood burning fireplace





LAYOUT



TOP FLOOR

- Open-plan kitchen, living and dining area

THIRD FLOOR

- 1 Double master bedroom (en-suite bathroom with separate shower, TV)
- 1 Double bedroom (en-suite shower room, separate shared guest WC, TV)
- 1 Double bedroom (en-suite shower room, TV)
- Guest WC

SECOND FLOOR

- 1 Double bedroom (en-suite shower room, TV)
- Indoor swimming pool
- Indoor hot tub
- Sauna
- Hammam
- Relaxation space
- Massage treatment room

FIRST FLOOR

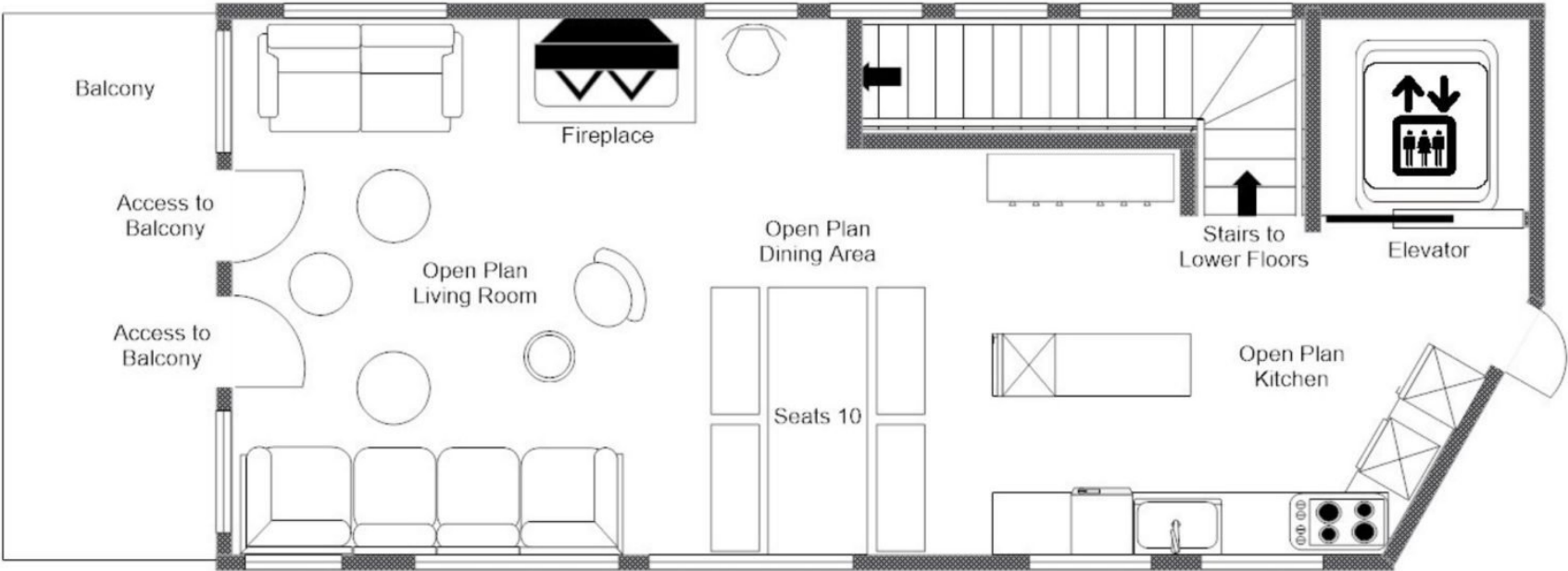
- 1 Quad bunk bedroom (en-suite bathroom with separate shower, sleeps 4 children)
- Dedicated cinema room
- Laundry room
- Office
- TV snug

GROUND FLOOR

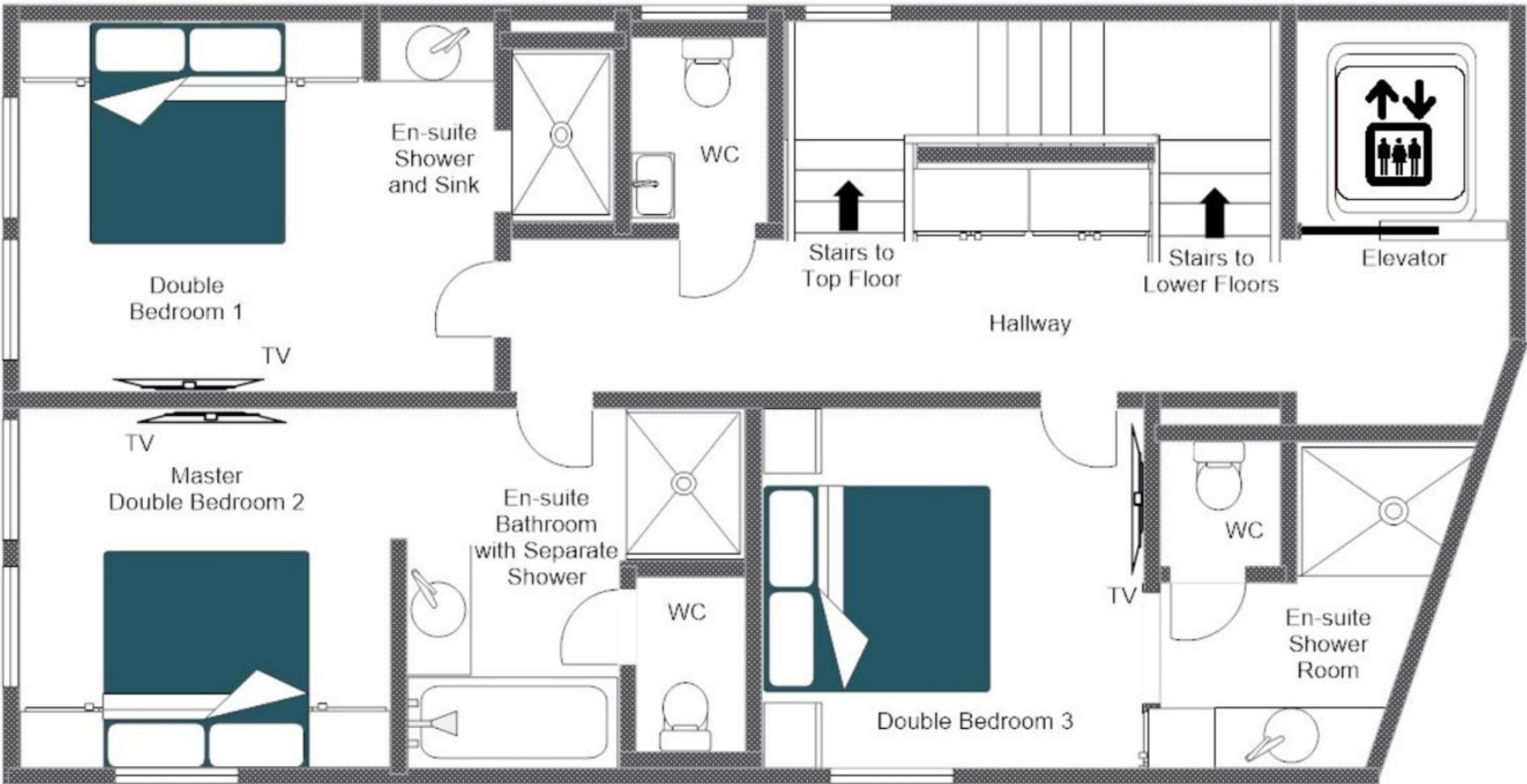
- Boot Room
- Shared Garage



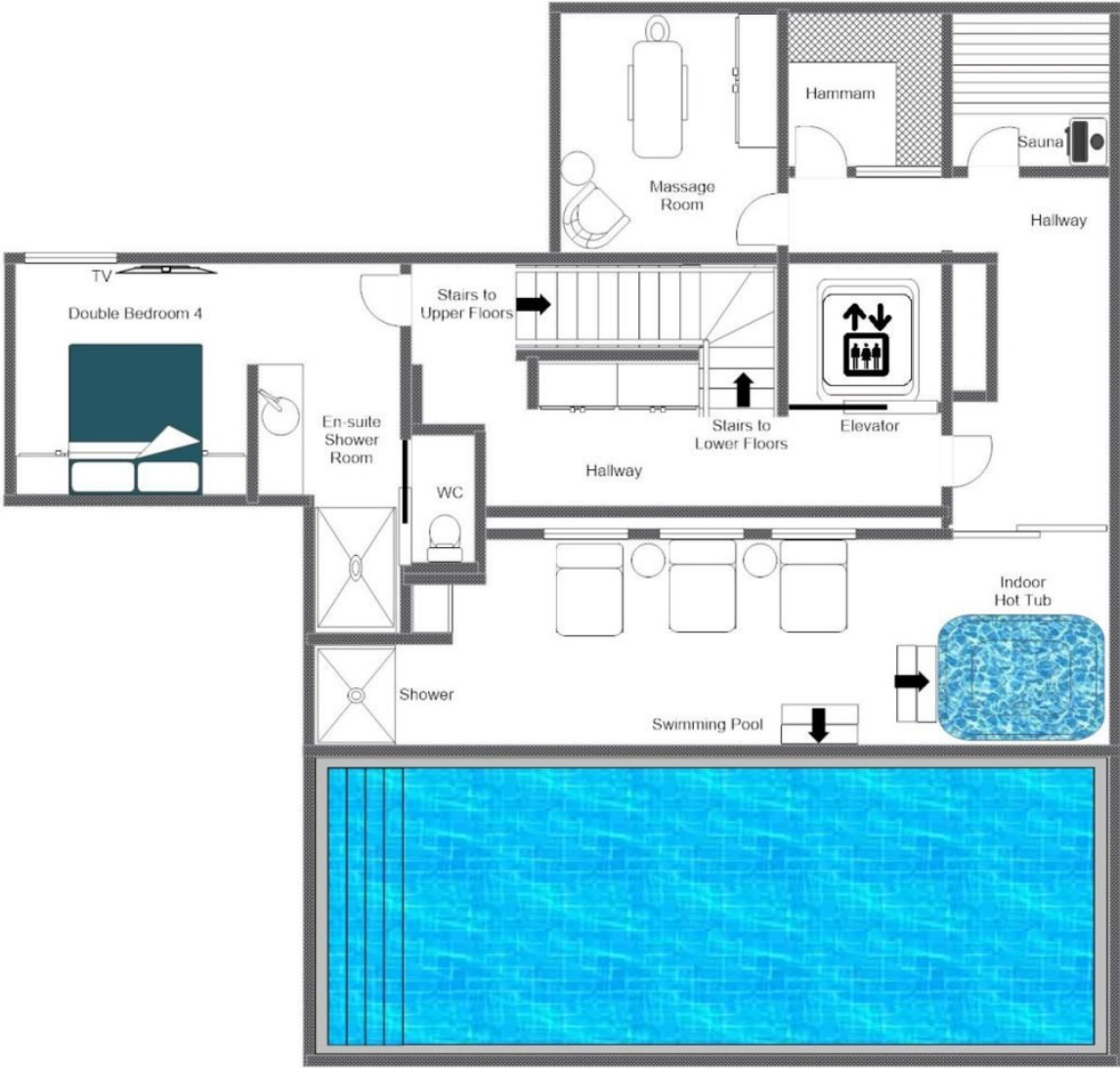
CHALET 1855, FLOOR 5, LIVING FLOOR
FOR ILLUSTRATION PURPOSES ONLY

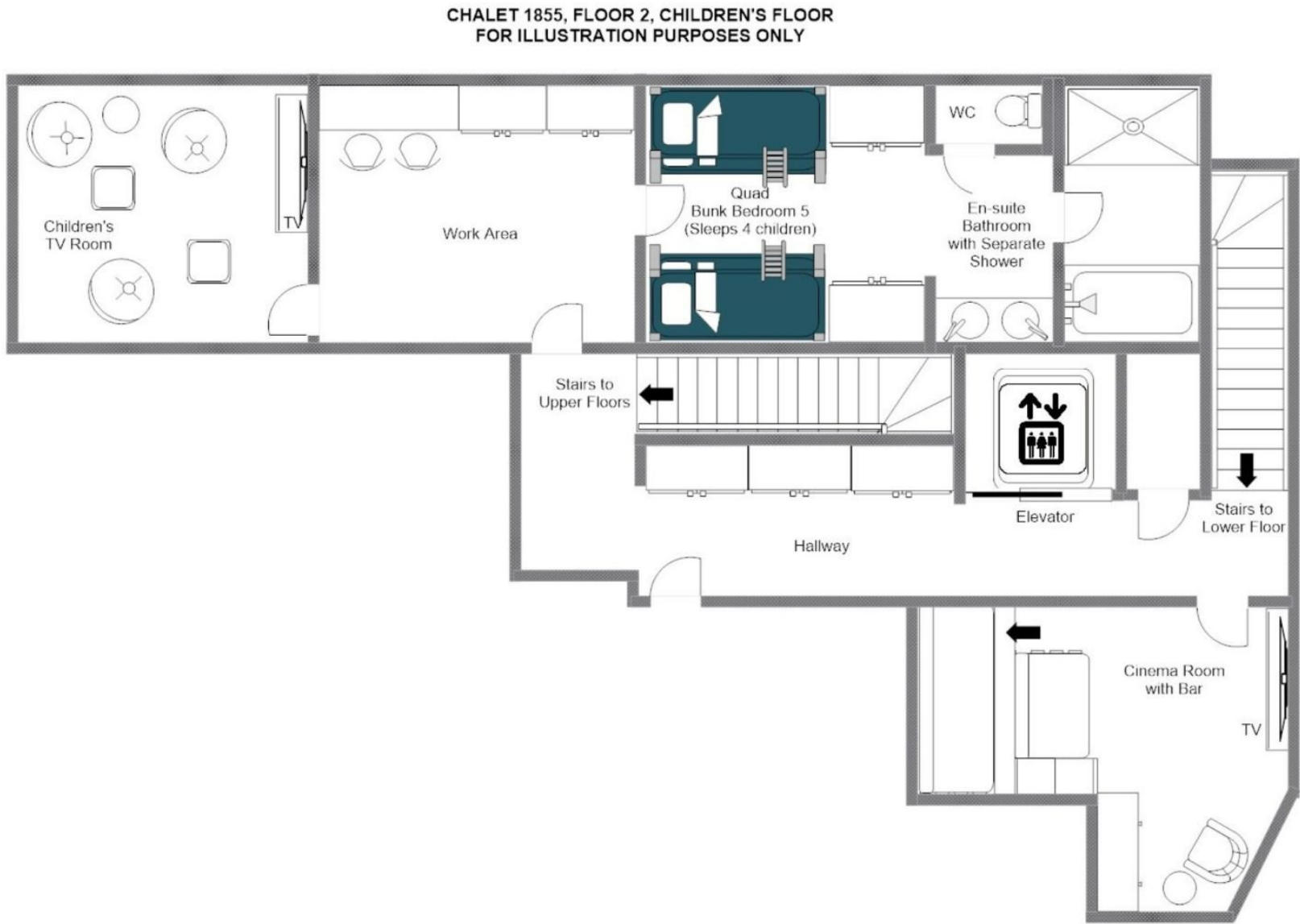


CHALET 1855, FLOOR 4, SLEEPING FLOOR
FOR ILLUSTRATION PURPOSES ONLY

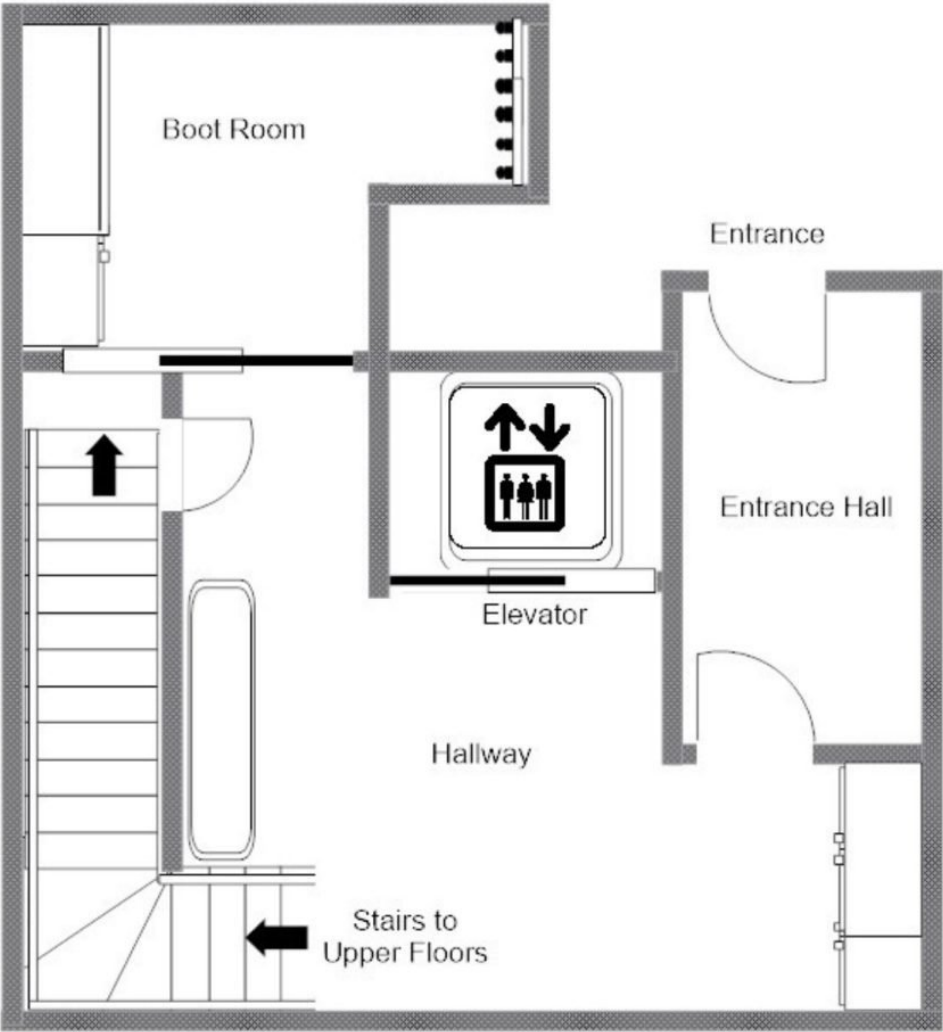


CHALET 1855, FLOOR 3, SPA FLOOR
FOR ILLUSTRATION PURPOSES ONLY





CHALET 1855, FLOOR 1, BOOT ROOM FLOOR
FOR ILLUSTRATION PURPOSES ONLY









LOCATION



Situated in an exclusive enclave just a 3-minute drive or 9-minute walk to both the centre of town and the nearest ski lifts.

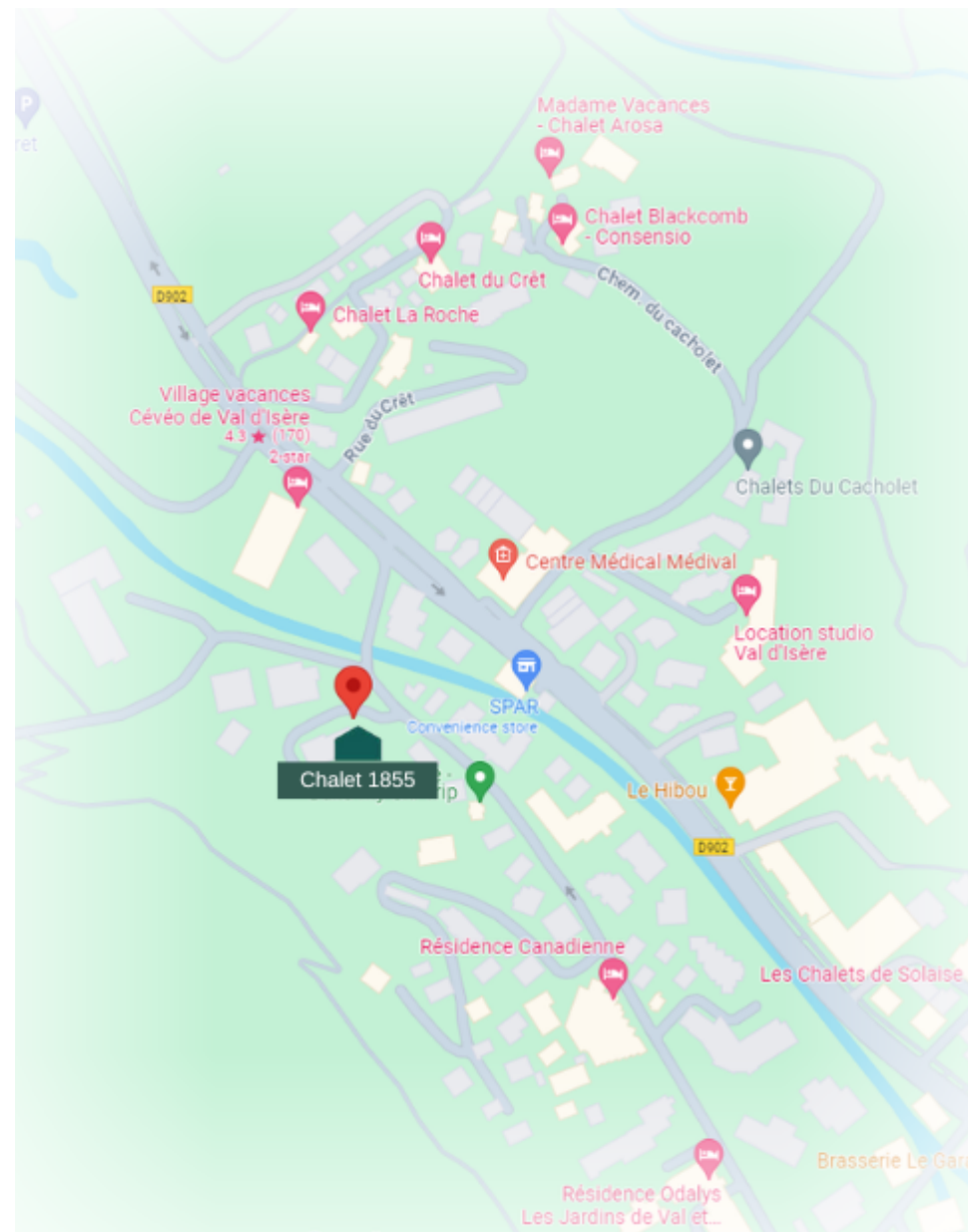
PROXIMITY

La Daille - 3-minute drive Front de Neige - 4-minute drive

Centre of town - 15-minute walk or 4-minute drive

GOOGLE CO-ORDINATES

45.45278388473849, 6.971465093054997







bramble
ski
BY
LE COLLECTIONIST