

HAUTE MONTAGNE

PART OF  
LE COLLECTIONIST

SUPER YACHTS IN THE SNOW

# CHALET 1936

---

VERBIER

# CHALET 1936

— ◆ —  
VERBIER



◆ Verbier, Switzerland  
◆ Indoor pool

◆ 1000 m2 of residence  
◆ Dedicated cinema room

◆ Sleeps 14  
◆ Games room

◆ Wellness Spa  
◆ Gym





## CHALET 1936 IS A STAND-OUT PRIVATE HOME PERCHED ON THE VERBIER PLATEAU.



From its unrivalled facilities to the stunning, sweeping views, this property is truly one-of-a-kind. Contemporary design fuses with traditional alpine elements to create a superbly stylish chalet.





# POP ART COOL MEETS CHALET CHIC IN THIS IMPRESSIVE ALPINE HOME.

## CHALET 1936 IS A TRULY JAW-DROPPING PROPERTY, MAKING FOR A REMARKABLE SKI CHALET EXPERIENCE.



Chalet 1936 is as breathtaking as the immense mountain scapes it is nestled within. Step inside and scan your eyes across gorgeous interiors and indulge in panoramic views of the surrounding mountains and valleys stretching out before the chalet.

The chalet is designed with the most minute detail in mind, combining antique wood beams and panelling, plush oak flooring, natural stone sinks, and traditional alpine features to create an interior that oozes class. Roll-top copper baths, contemporary lighting and furniture, pop art, and sumptuous fabrics ease you in to an experience of modern opulence.

Set out over five floors are seven individually designed en-suite bedrooms sleeping a total of 14 people in ultimate grandeur. An elevator services the first four floors of the property to give you complete ease of access to all of its facilities.

Here you can unwind in your personal spa and entertainment areas, perhaps swimming in the 8x3 metre pool with swim jets, relaxing in the glass hammam, or recharging in the spacious gym. An outdoor hot tub, bar area, and cinema room will keep you entertained throughout your stay.

The top floor of the chalet is dedicated to the impressive master bedroom where you can retreat to recharge in a luxurious suite with roll-top bath, shower room, dressing area, and your own cosy fire place and private balcony.

Descending down the stairs or in the lift, the floor below is dedicated to a further five bespoke-designed bedrooms - three double en-suite bedrooms with balcony access, a children's room with two sets of delightful hand-crafted bunks sleeping four, and an en-suite bedroom with a queen-sized bed.

The main entrance of the chalet is on the second floor, where you can enter the main entertaining areas of the house. An elegant open plan dining area seating 14 will provide many exquisite dining experiences catered by your private chef, who you can observe at work in the well-equipped and extensive kitchen. Put your feet up and relax in the exceptional living room with open fireplace.

A separate winter entrance leads to the ski room where you can store all of your equipment safely. There is also a guest restroom here.

The chalet has exterior parking for three vehicles, meaning your cars are kept safe and close at hand at all times.











# FACILITIES



## SPA



Indulgent spa facilities will ensure ultimate relaxation throughout your stay. Take a post-ski dip in the large indoor pool or a steam in the hammam, or simply put your feet up on the loungers facing the floor-to-ceiling panoramic windows, with mountain views stretching far into the distance.



## GYM



The state-of-the-art facilities include a fully-equipped gym, where you can recharge your ski muscles to perform at your peak on the mountain.



## DINING



Allow your private chef to create a delicious dining experience tailored to your group, as you regale tales from the slopes around the table. The dining space adjoining the large, semi-open kitchen is the ideal place to entertain, from intimate evening soirees to long, lavish dinner parties.



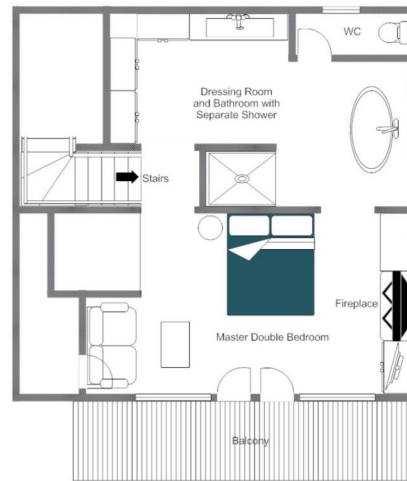






# LAYOUT

CHALET 1936 - TOP FLOOR, FOR ILLUSTRATION PURPOSES ONLY



## TOP FLOOR

- Master bedroom (sleeps 2, en-suite bathroom with separate shower, dressing room, living area with fireplace, private balcony)

# LAYOUT

CHALET 1936 - FIRST FLOOR, FOR ILLUSTRATION PURPOSES ONLY



## FIRST FLOOR

- Quad bunk bedroom (sleeps 4, en-suite shower room)
  - Queen bedroom (sleeps 2, en-suite shower room, balcony access)
- Double bedroom (sleeps 2, en-suite bathroom, balcony access)
- Double bedroom (sleeps 2, en-suite bathroom, balcony access)
  - Double bedroom (sleeps 2, en-suite shower room, private balcony)



# LAYOUT



## ENTRANCE LEVEL

- Main entrance hall
- Ski room with boot heaters (with a separate winter entrance)
  - Office with fireplace
  - Guest WC
- Kitchen (can be closed off)
  - Open plan dining area
- Open plan living area with fireplace
  - Kitchen

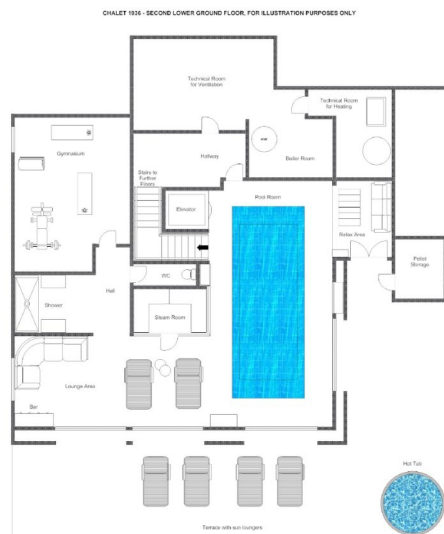
# LAYOUT



## GROUND FLOOR

- Cinema room
- Games room
  - Bar area
- Relaxation area
  - Twin bedroom (sleeps 2, en-suite bathroom)
- Staff double bedroom (not available for guest use)
  - Guest WC
  - Storage room
  - Laundry room

# LAYOUT

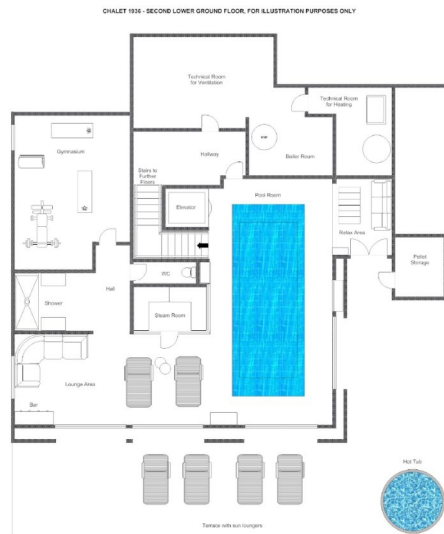


## LOWER GROUND FLOOR

- Indoor heated pool (8m x 3m) with swim jets
- Relaxation and lounge areas
  - Spa with hammam
  - Shower room
  - Gym
  - Guest restroom
- Terrace with hot tub and sun loungers
- Lift providing access to all floors except the top floor



# LAYOUT



## LOWER GROUND FLOOR

- Indoor heated pool (8m x 3m) with swim jets
- Relaxation and lounge areas
  - Spa with hammam
  - Shower room
  - Gym
  - Guest restroom
- Terrace with hot tub and sun loungers
- Lift providing access to all floors except the top floor



# LOCATION

## PARKING

Outdoor parking: 3

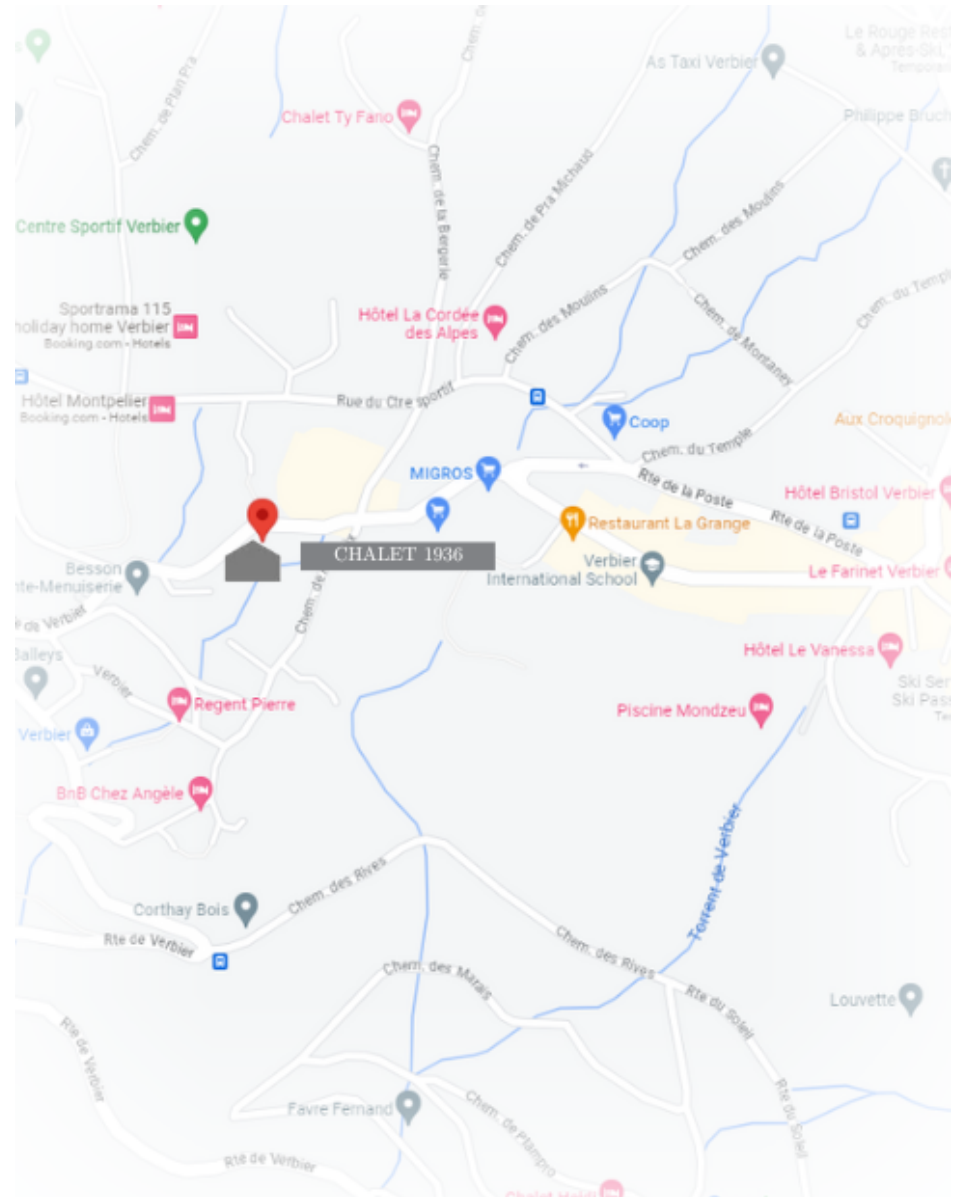
## LOCATION

Perched on the edge of the sunny plateau, Chalet 1936 is a stone's throw from Verbier's shops, restaurants, nightlife and ski lifts.

## PROXIMITY

Médran - 5-minute drive

Village centre - 3-minutes











CHALET 1936



VERBIER