

# CHALET ABADE

---

FRANCE

## VAL D'ISÈRE



# CHALET ABADE

VAL D'ISÈRE | Sleeps 10+2



REDEFINING THE LUXURY CHALET EXPERIENCE



A STUNNING NEWLY RENOVATED LUXURY ALPINE  
CHALET IN AN INCREDIBLE SKI-IN SKI-OUT  
LOCATION. CHALET ABADE SEAMLESSLY COMBINES  
TRADITIONAL CRAFTSMANSHIP WITH MODERN DESIGN  
AND COMFORT.

# DESCRIPTION



REDEFINING THE LUXURY CHALET EXPERIENCE



Sleeping up to 12 guests across five exquisitely designed bedrooms, this stand-alone chalet set over three floors has been newly renovated by internationally renowned interior designers, Turner Pocock. Chalet Abade is a fabulously luxurious yet homely winter retreat for a large family or group of friends looking to relax and indulge in sophisticated surroundings.

Chalet Abade is perfectly positioned in a ski-in ski-out location, with the piste leading to the Olympique and Solaise lifts right next to the chalet. Lounge in the giant velvet chez lounge and watch skiers fly by right outside the expansive floor-to-ceiling living room windows. The village centre is also only a 5-minute drive away from the chalet, and the main lift station hub of Val d'Isère is a 1-minute ski away from the property. Chalet Abade truly is ideally situated for exploring Val-d'Isère both on and off the slopes.

The entrance to the chalet is on the ground floor where you will find the ski and boot room, complete with heated boot warmers to ensure your ski boots are toasty and warm for a day on the slopes.

On this floor are three of the five bedrooms; two twin/double bedrooms with en-suite shower rooms with smart design features such as gentle sensor-activated bathroom lighting. The third bedroom is a spacious quad bunk bedroom with an en-suite bathroom with stunning patterned tiles and sleek finishes.

Also found on this floor is the chalet's hammam, rain shower and tranquil massage room, where you can unwind in privacy after a long day on the slopes. The large laundry room is discreetly positioned off the corridor.

The first floor is dedicated to entertaining. The stunning living area boasts a double-height ceiling, exposed beams, grand fireplace and striking chandelier giving real wow factor.

Two sumptuous sofas sit back-to-back; one side allowing you to hunker down in front of the roaring fire, and the other inviting you to play board games with the family, enjoy an afternoon cup of tea or get lost in your favourite book. The room is flooded with light from the expansive windows, framing the impressive views of the adjacent piste and mountains beyond.

The dining area is set between the living area and kitchen, all of which have discreet wall-mounted Sonos speakers, allowing you to set the tone for any occasion. A beautiful setting for dinners with friends and family, the dining area with stylish wishbone chairs and its own open fireplace is an elegant and inviting space. The state-of-the-art kitchen is situated off the dining room, and has access to the balcony. Complete with table and chairs, you can enjoy long lunches here outside in the sun.

The outdoor hot tub is ideal for reviving tired limbs after a day on the slopes and soaking up the majestic mountainscape. A cosy TV room is set off the hallway, where soft lighting, a plush sofa and warm, dark tones set the scene for cosy family movie nights. The chalet is equipped with the latest technology including high speed fibre optic Wi-Fi, Netflix, and Apple TV. There is also a guest WC on this floor.

The staircase leads up to the top floor where you will find the two impressive master double bedroom suites. The first master bedroom with en-suite bathroom and separate shower, has a private balcony with perfect views of the mountains. The second master suite comes with an en-suite bathroom and separate shower & WC. Both bedrooms have a tranquil and calming atmosphere, where sophisticated yet warm interior design and soft, sensor led lighting give that extra luxurious feel. The rooms boast plenty of built-in storage, as do their en-suites, and will leave you feeling rested and ready for a day on the slopes.



# FACILITIES





## INTERIOR

- Sleeps 10 + 2
- 315 Square metres
- 5 Bedrooms
- 8 Individual beds
- 5 Bathrooms
- 1 Additional WCs
- 12 Dining table seats
- 12 Living area seats

## APPLIANCES

- Bluetooth speaker
- Integrated sound system
- Smart TV
- Sonos
- Wifi

## WELLNESS AND RELAXATION

- Balcony
- Hammam/steam room
- Massage treatment room
- Outdoor hot tub

## ENTERTAINMENT

- TV room

## ADDITIONAL

- Cot/high chair available
- Family-friendly chalets
- Heated boot warmers
- Private laundry facilities
- Ski-in & Ski-out
- Wood burning fireplace
- Outdoor Parking: 2





# LAYOUT



REDEFINING THE LUXURY CHALET EXPERIENCE



## TOP FLOOR

- 1 Master double bedroom (150 cm bed with en-suite bathroom, separate shower and balcony)
- 1 Master double bedroom (en-suite bathroom, separate shower)

## FIRST FLOOR

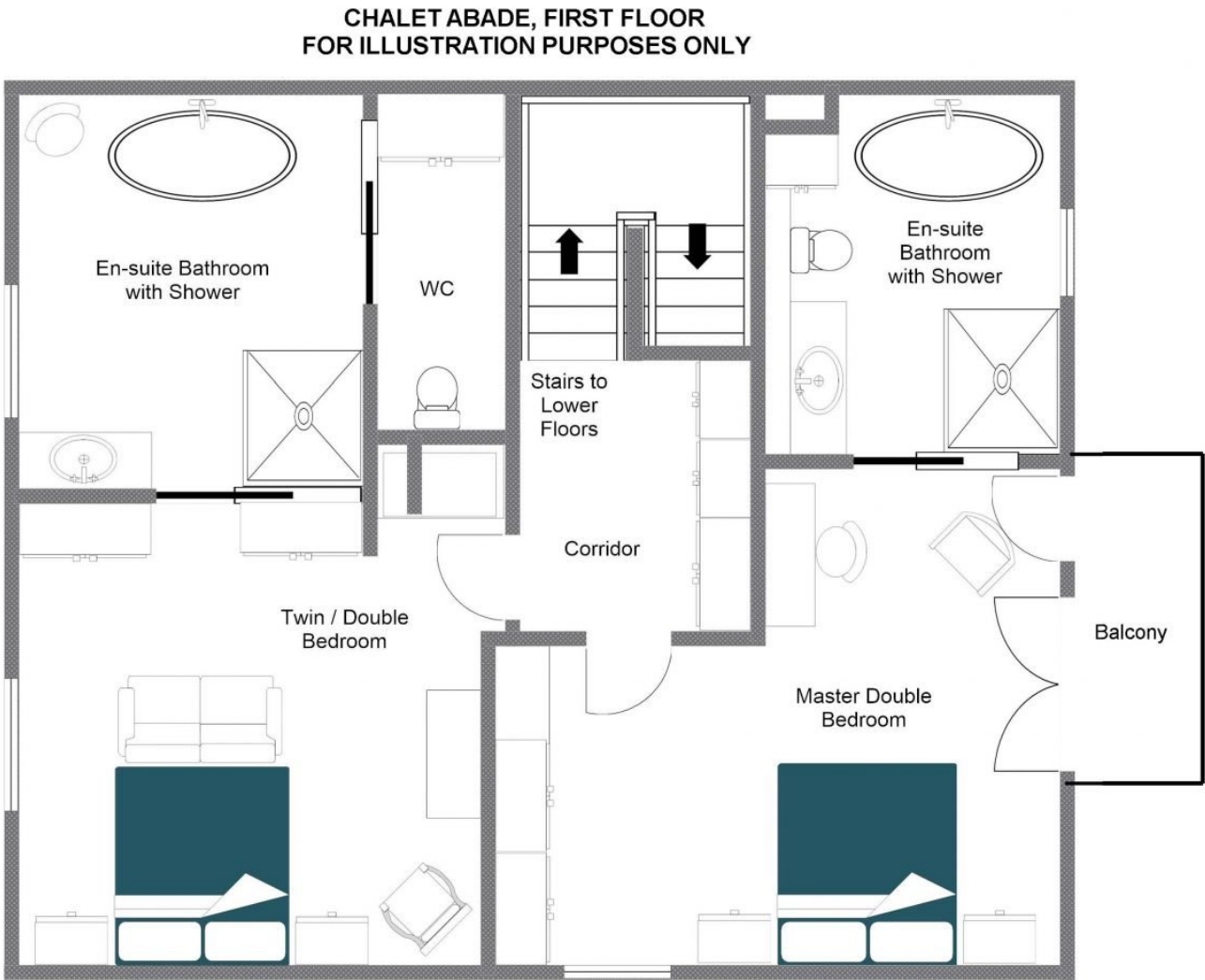
- Open plan kitchen, living and dining room
- TV room
- Guest W.C.
- Outdoor hot tub

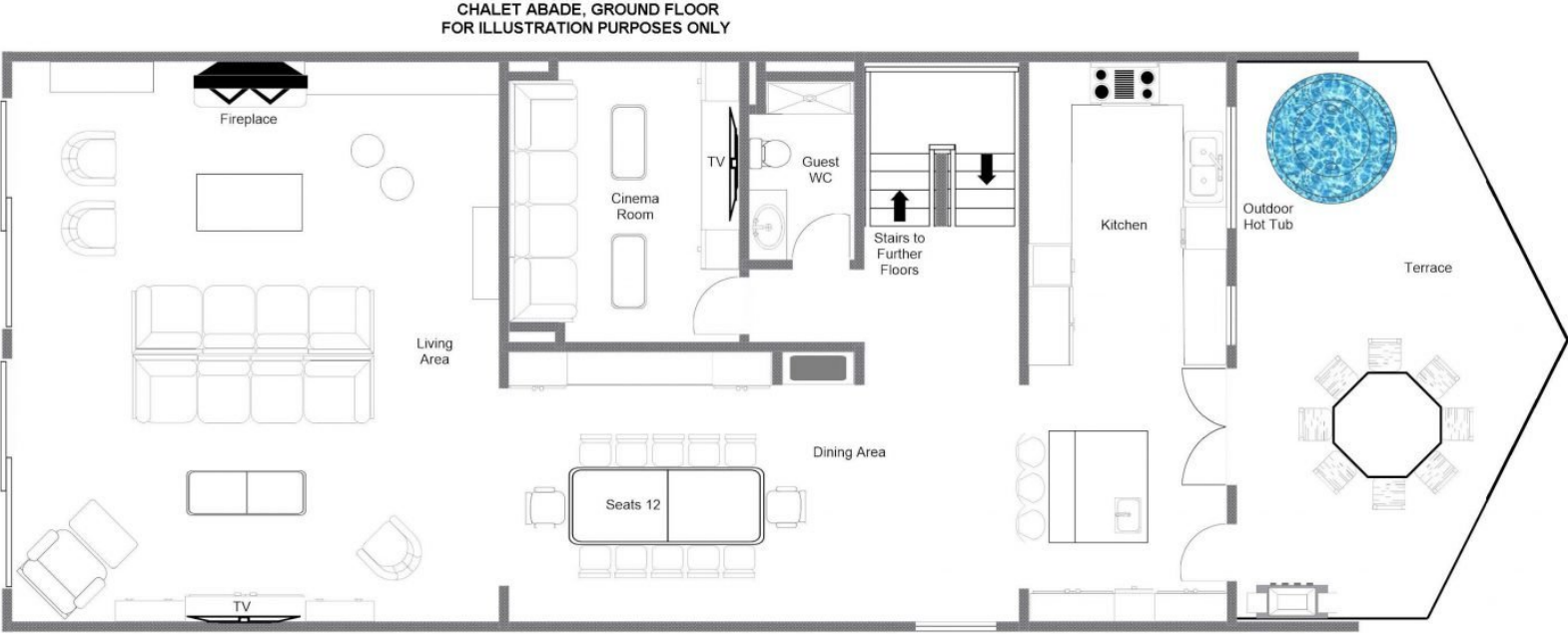
## GROUND FLOOR

- 1 Twin/Double bedroom (en-suite shower room)
- 1 Twin/Double bedroom (en-suite shower room)
- 1 Bunk room (L190 x W90cm, sleeps 4, en-suite bathroom)
- Hammam and shower room
- Massage room
- Ski and boot room
- Laundry room

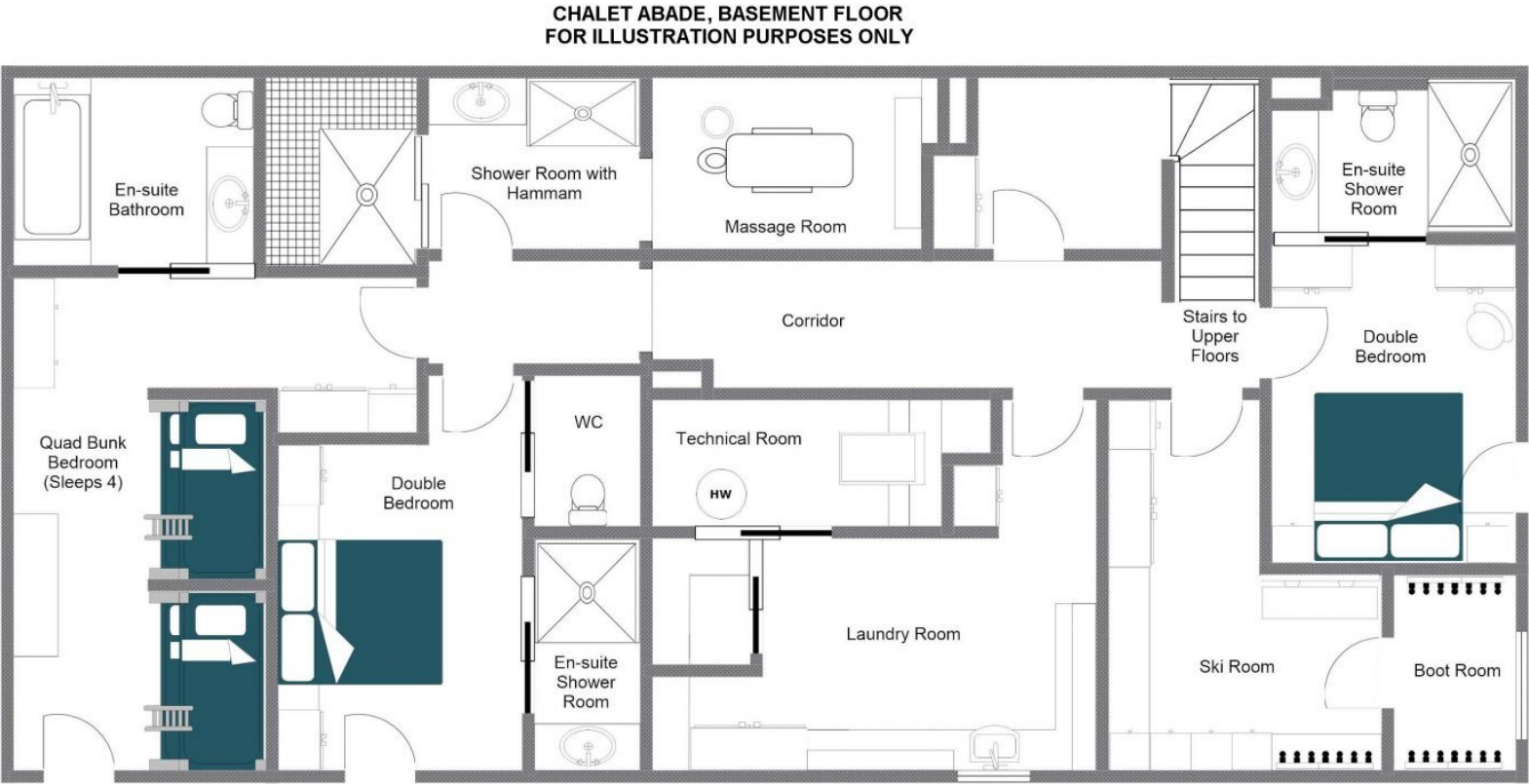


















# LOCATION



REDEFINING THE LUXURY CHALET EXPERIENCE



## PROXIMITY

Solaise ski lift - 15-minute walk

Village centre – 5-minute drive or 15-minute walk

## GOOGLE CO-ORDINATES

45.441235, 6.977620















bramble  
ski  
BY  
LE COLLECTIONIST