

CHALET BIBI

SWITZERLAND

VERBIER

CHALET BIBI

VERBIER | Sleeps 6+3 spa



A REFINED ALPINE RETREAT WITH PANORAMIC
VIEWS AND EXCEPTIONAL WELLNESS FACILITIES,
CHALET BIBI STANDS AS ONE OF VERBIER'S MOST
STYLISH PRIVATE HOMES.



DESCRIPTION



Chalet Bibi is one of Verbier's most stylish private homes. Set in a secluded and elevated position, the chalet enjoys sweeping views across the surrounding peaks and a true sense of privacy. For advanced skiers, it is possible to return close to the property off-piste from the Savoleyres side.

Blending contemporary design with traditional alpine materials, the chalet features aged wood, natural stone and soft neutral tones throughout, creating a warm yet sophisticated atmosphere.

Sleeping up to nine guests across five bedrooms, Chalet Bibi is ideal for families or groups of friends. Accessed via an underground garage, the entrance level includes a well-equipped ski room with boot warmers and ample storage.

The first floor is dedicated to relaxation, with four bedrooms including two en-suite doubles and a children's bunk room with its own bathroom. Several rooms open directly onto the terrace. This level also hosts the chalet's wellness area, featuring a sauna, hammam and a striking sunken cedar wood outdoor hot tub with exceptional views.

The top floor is the heart of the chalet, with a spacious open-plan living and dining area centred around a grand stone fireplace. Large windows open onto a terrace overlooking the Petit Combin. A fully equipped kitchen with a generous bar area is set slightly apart, making it ideal for both entertaining and privacy.

Also on this level, the master bedroom enjoys a prime position with direct terrace access and proximity to the outdoor hot tub.

Chalet Bibi offers a rare combination of style, seclusion and comfort, an exceptional base for experiencing the very best of Verbier.

FACILITIES



INTERIOR

- Sleeps 6 + 3
- 280 Square metres
- 5 Bedrooms
- 6 Individual beds
- 6 Bathrooms
- 1 Additional WCs
- 12 Dining table seats
- 10 Living area seats

APPLIANCES

- Cable TV
- Hi-Fi/CD player/MP3 player
- Wifi

WELLNESS AND RELAXATION

- Hammam/steam room
- Outdoor hot tub
- south-facing terrace

ENTERTAINMENT

- TV/Playroom

ADDITIONAL

- Cot/high chair available
- Family-friendly chalets
- Heated boot warmers
- Private laundry facilities
- Private ski locker
- Wood burning fireplace



LAYOUT



TOP FLOOR

- Open plan kitchen, living and dining room
- 1 master bedroom (en-suite bathroom, TV, dressing room, terrace access)
- 1 single bedroom (en-suite shower room, desk)
- TV room
- Terrace with out door hot tub

FIRST FLOOR

- 1 double bedroom (en-suite shower room, terrace access)
- 1 double bedroom (en-suite bathroom)
- 1 bunk room (en-suite children's bathroom, terrace access)
- 1 bunk room (en-suite bathroom, terrace access)
- Small spa with sauna and hammam
- Guest WC

GROUND FLOOR

- Entrance hallway
- Ski storage with heated boot warmers
- Guest WC
- Garage









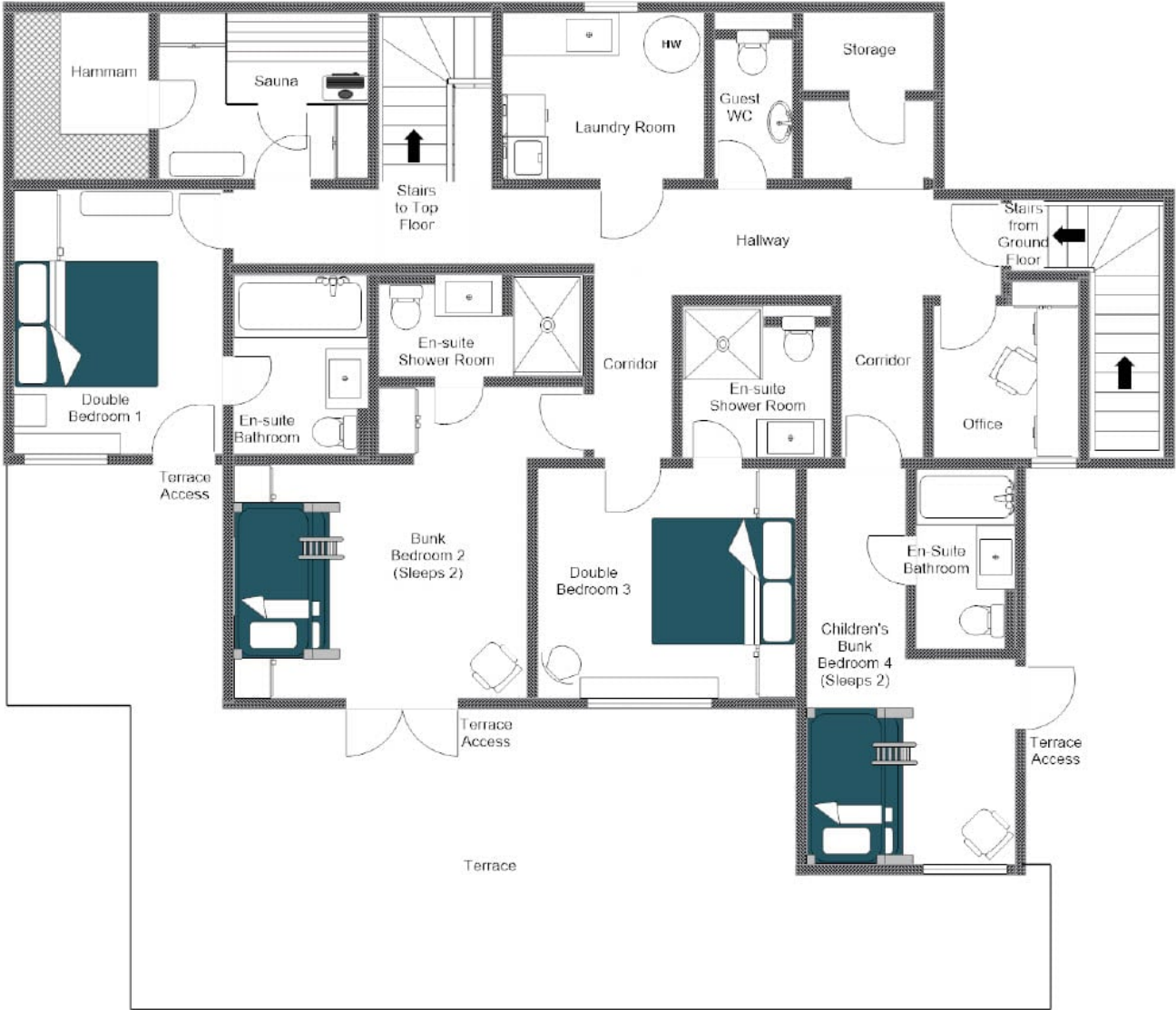


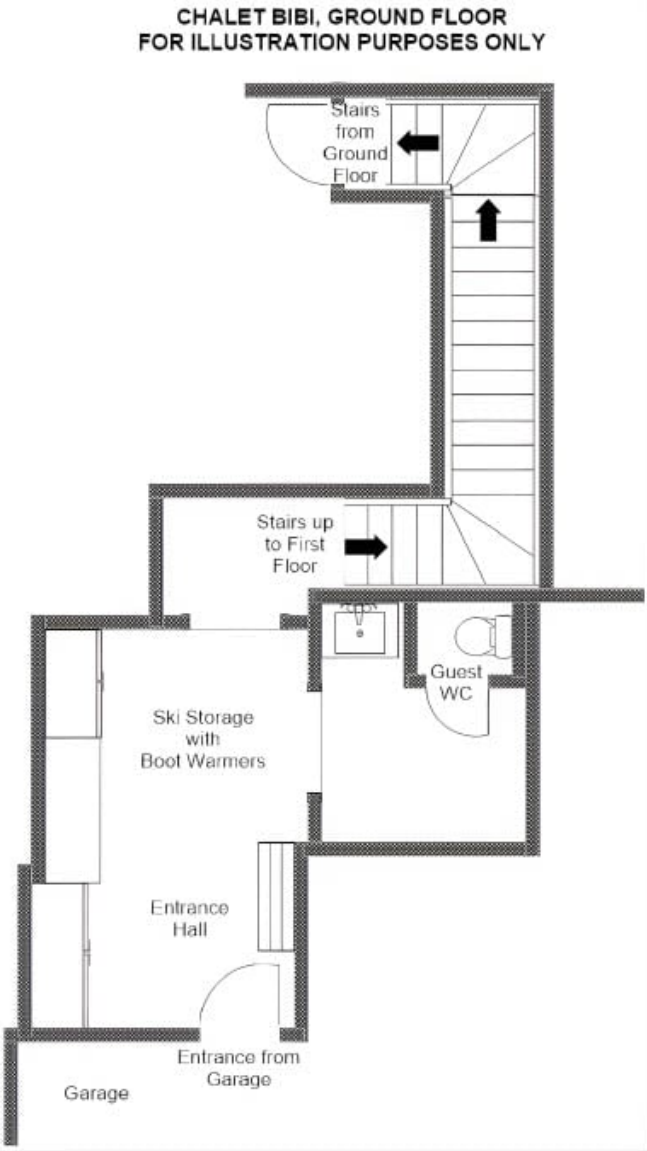
FLOOR PLAN TOP FLOOR

FOR ILLUSTRATION PURPOSES ONLY



CHALET BIBI, FIRST FLOOR
FOR ILLUSTRATION PURPOSES ONLY



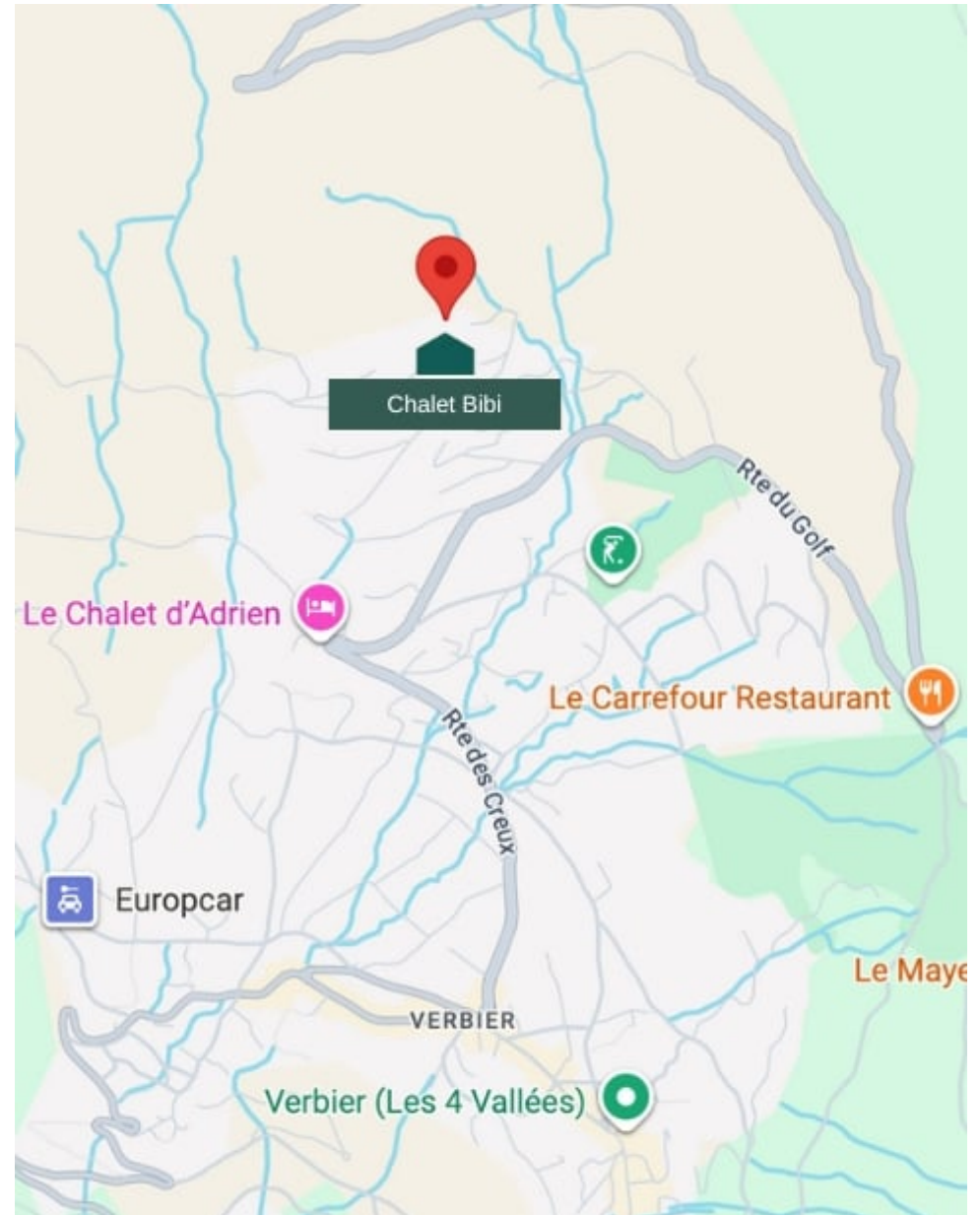


PROXIMITY

Médran - 7-minute drive. Savoleyres - 5-minute drive. Place Centrale - 6-minute drive.

GOOGLE CO-ORDINATES

46.110086, 7.228044



LOCATION





bramble
ski
BY
LE COLLECTIONIST