

CHALET L'ORCHIDÉE

FRANCE

MÉRIBEL

CHALET L'ORCHIDÉE

MÉRIBEL | Sleeps 8+4



STUNNING NEWLY BUILT STANDALONE CHALET IN
A PEACEFUL AREA OF MERIBEL, WITH EASY
ACCESS TO THE GONDOLA AND OUTDOOR HOT
TUB.

DESCRIPTION



This stunning newly renovated chalet is tucked away in the tranquil Raffort hamlet in Meribel, only a five-minute walk from the Olympic gondola. This stylish and elegant chalet blends modern design with alpine furnishings. When the snow conditions allow, skiing right up to the chalet is possible via an off-piste section from the blue Raffort slope. You arrive directly at garden level, at the front of the chalet.

On the ground level, you'll find everything you need to ease into your stay. Upon entering the chalet, you'll find the spacious ski room with boot warmers and a laundry room. Adjoining this room is a delightful games room, complete with a table football table & seating area, perfect for the children to enjoy after a busy day skiing.

This floor also houses the first two bedrooms. The first is a charming children's bunk room with a small window sleeping four, complete with an en-suite bathroom (pictures coming soon). Next door is the first double bedroom, an elegant and stylish space with floor-to-ceiling windows and an en-suite shower room with a spacious walk-in shower.

At the heart of the chalet is a spacious open-plan kitchen, dining, and living area on the first floor, where sleek modern design meets cosy alpine warmth. Light pours in through floor-to-ceiling windows, and there is another entrance to the chalet here: a small balcony with external steps from the ground floor leads directly to a door opening into the kitchen.

The chalet features a grand and spacious kitchen, in keeping with the traditional alpine aesthetic, thanks to wood cladding throughout, yet fully modern with a large marble kitchen island. The dining area, which seats eight, sits in front of the floor-to-ceiling windows, offering fabulous views of the alpine surroundings, perfect for enjoying breakfast with a view.

A generous balcony extends from this space, spanning the entire floor, the perfect spot for morning coffee or soaking up the mountain sun, with no property in front you are totally secluded in nature here, perfect for a moment of quiet to begin the day. The balcony includes an outdoor dining table for al fresco meals surrounded by nature. You'll also find the hot tub here, perfect for soaking sore muscles after a day of skiing or admiring the stars above as the snow falls around you and the steam rises.

After dinner, relax around the cosy fireplace, sharing tales of the day. Next to the living room, separated by a partial wall, is a TV room with a spacious, plush sofa, perfect for letting the children unwind whilst the adults entertain next door.

On the next floor, you'll find the main sleeping quarters, comprising three double bedrooms. The first is an elegant twin/double room with an en-suite shower room and mountain views stretching towards Méribel. The second is also a twin/double room, featuring a spacious en-suite shower room. This room also has a private balcony with views of the slopes behind the chalet. Heading down the corridor is the primary bedroom, which can also be a twin or double, a stylish and spacious bedroom with a private balcony and a large ensuite shower room with a walk-in shower.

Stairs on this floor lead up to a mezzanine level on the top floor.

This is a beautiful alpine chalet, spacious and elegant, with room for the whole family, an outdoor hot tub and a games room. With easy access to the heart of Meribel via the Olympic gondola, only a five-minute walk away.

FACILITIES



INTERIOR

- Sleeps 8 + 4
- 300 Square metres
- 5 Bedrooms
- 8+4 Individual beds
- 5 Bathrooms
- 1 Additional WCs
- 8 Dining table seats
- 8 Living area seats

APPLIANCES

- Smart TV

WELLNESS AND RELAXATION

- Balcony
- Outdoor hot tub
- Terrace

ENTERTAINMENT

- Foosball table
- Games room
- TV room

ADDITIONAL

- Heated boot warmers
- New to Bramble Ski
- Private laundry facilities
- Private ski room
- Outdoor Parking: 1



LAYOUT



GROUND FLOOR

- Ski room
- Private laundry room
- Games room
- 1 x Bunk room, sleeping four children with an ensuite bathroom
- 1 x Twin/Double room with en-suite shower room

FIRST FLOOR

- Open plan kitchen, living room and TV room
- Hot tub

SECOND FLOOR

- 1 x Twin/Double bedroom with ensuite shower room
- 1 x Primary bedroom, twin/double with ensuite shower room and private balcony
- 1 x Twin/double bedroom with ensuite shower room and private balcony

THIRD FLOOR

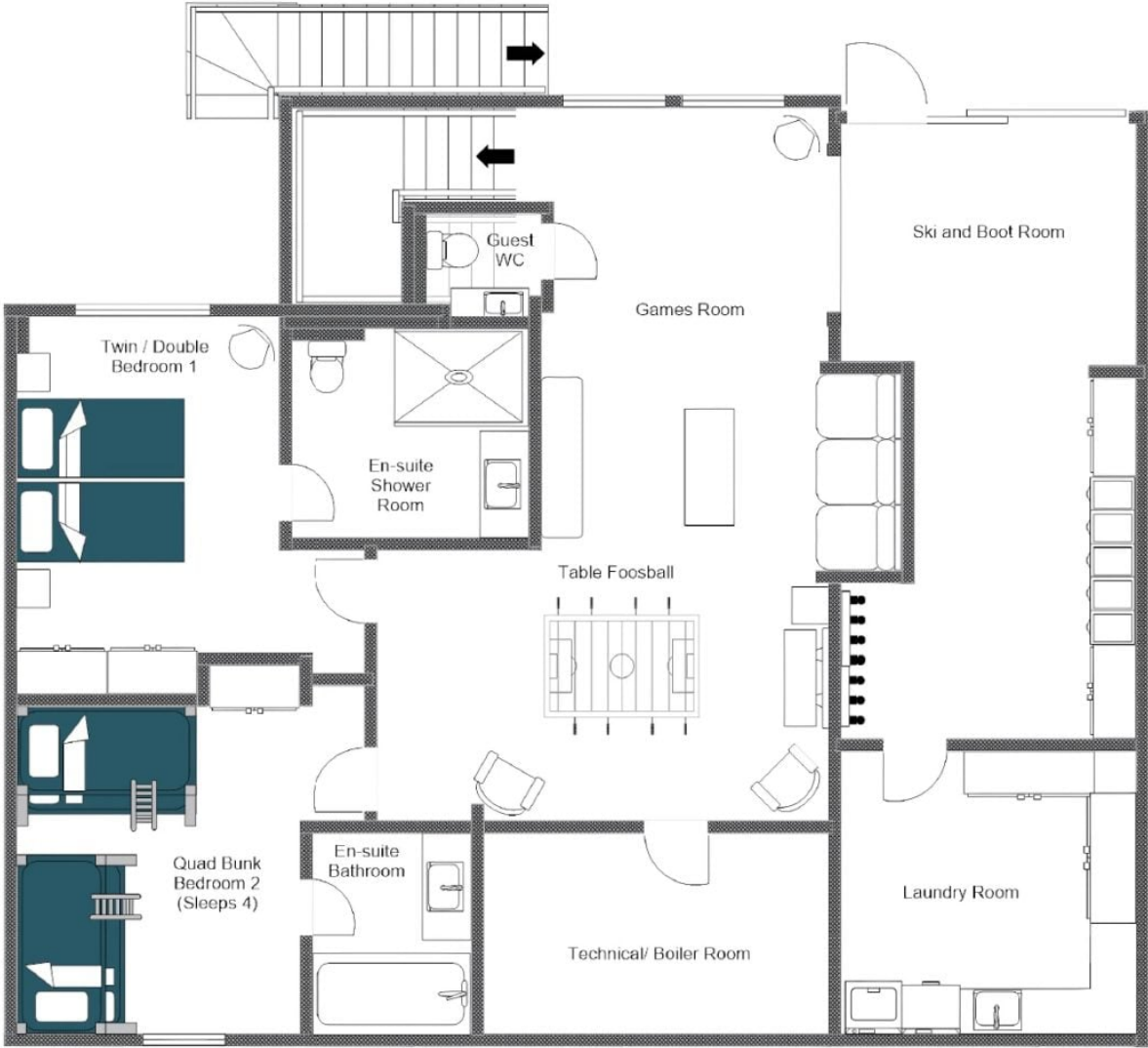
- Mezzanine level accessed via stairs

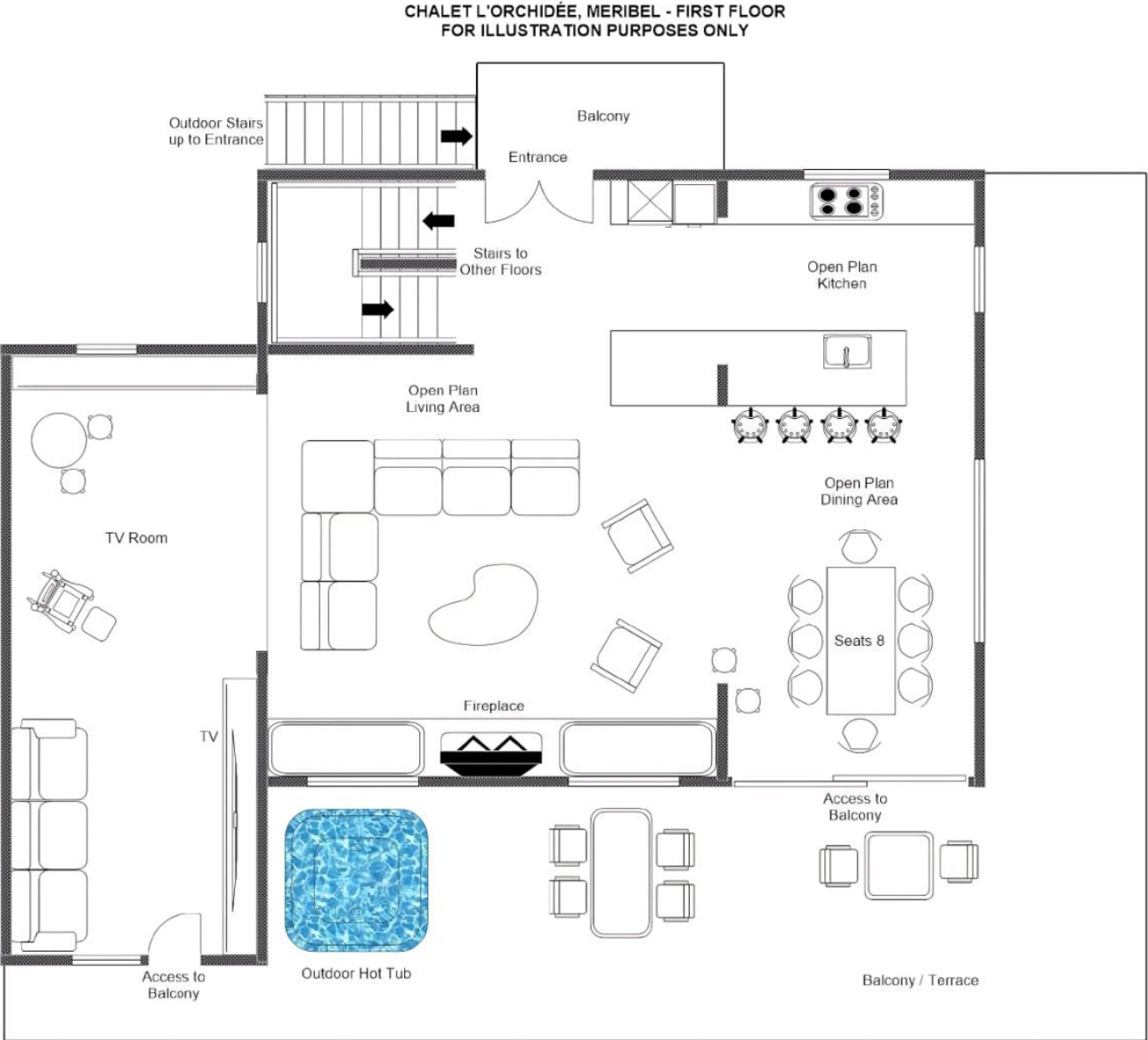




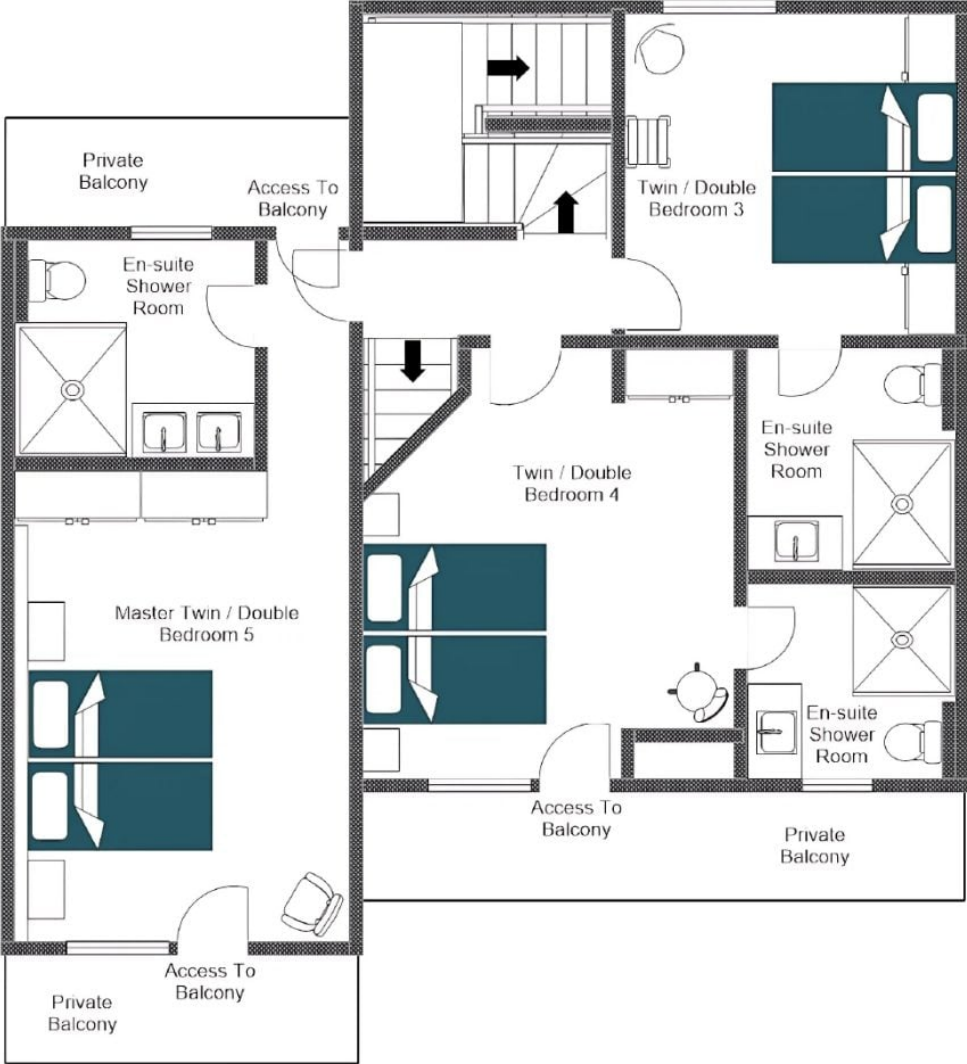


CHALET L'ORCHIDÉE, MERIBEL - GROUND FLOOR
FOR ILLUSTRATION PURPOSES ONLY

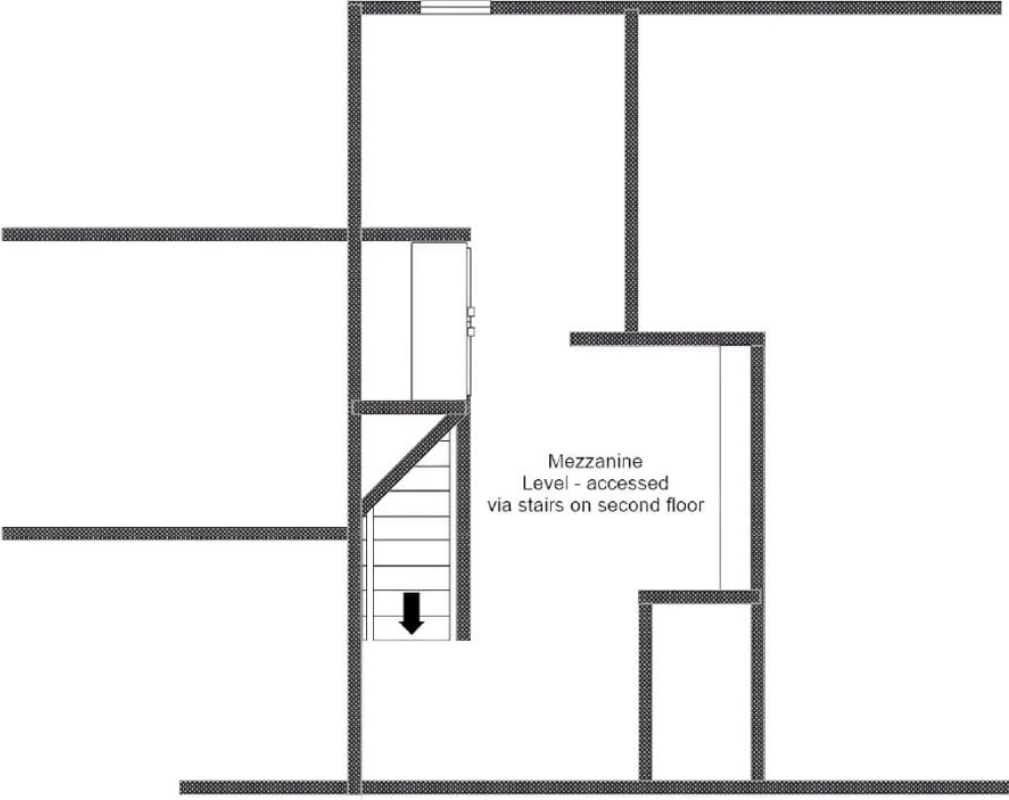




CHALET L'ORCHIDÉE, MERIBEL - SECOND FLOOR
FOR ILLUSTRATION PURPOSES ONLY



CHALET L'ORCHIDÉE, MERIBEL - THIRD FLOOR
FOR ILLUSTRATION PURPOSES ONLY



LOCATION



Chalet L'Orchidée is located in the peaceful Raffort Hameau, just a 5-minute walk to the Olympic gondola, which takes you straight to the heart of Meribel.

PROXIMITY

Méribel Olympic Gondola - 5-minute walk

Méribel village - 5-minute drive

GOOGLE CO-ORDINATES

45.40952, 6.55736







An aerial photograph of a mountain resort in winter. The scene is dominated by snow-covered slopes and dense evergreen forests. Several large, multi-story wooden chalets with snow-laden roofs are scattered across the upper part of the mountain. The sky is filled with soft, white clouds, and the overall atmosphere is serene and cold. The text 'bramble ski' is centered in the middle of the image, with 'BY LE COLLECTIONIST' written below it in a smaller font.

bramble
ski
BY
LE COLLECTIONIST