

CHALET MARMOTTIÈRE

VERBIER

CHALET MARMOTTIÈRE

— ◆ —
VERBIER



◆ Verbier, Switzerland

◆ Gym

◆ 1500 m2 of residence

◆ Bar

◆ Sleeps 18

◆ Dedicated cinema room

◆ Wellness Spa

◆ Games room



WINNER OF WORLDS BEST NEW CHALET 2020. VERBIER HAS ATTAINED A NEW PEAK
WITH CHALET MARMOTTIÈRE, A TRULY UNIQUE ALPINE RETREAT, WITH ALL THE
FACILITIES YOU COULD ASK FOR AND MORE.



Chalet Marmottière is a luxurious, unique and modern property. The interior is incredibly spacious, bathed in natural light with heavenly views of the mountains from the floor to ceiling windows. Using a perfectly blended mix of natural materials and modern bespoke design and furnishings, the interior creates a dramatic and sophisticated atmosphere.



SET ACROSS TWO CHALETS, LINKED BY AN EXTERIOR PATH AND ALSO INTERNALLY THROUGH THE GARAGE, CHALET MARMOTTIÈRE SITS AT THE PINNACLE OF LUXURIOUS MOUNTAIN LIVING.



Boasting nine exquisite bedrooms which sleep up to 18 guests, it includes world-class in-chalet facilities such as an indoor swimming pool, outdoor hot tub, 3D cinema, bar and a bowling alley. Each area has been meticulously designed and crafted, creating a most outstanding private home.

The top floor of the main chalet is dedicated to the two impressive master bedroom suites. Both suites have their own individual style and design, and the level of care that has been taken to create a relaxing and restful atmosphere is apparent throughout. The first bedroom has a sumptuous king-sized bed, a walk-in wardrobe, a small living area with an open fireplace and state-of-the-art entertainment system, and an en-suite shower room.

The second suite enjoys the same superb facilities, the only difference being an en-suite bathroom. The pair have private balconies from which you can admire breathtaking views of the snow-covered mountains.

On the first floor, you will find the striking split-level open-plan living and dining area with a double-height ceiling. Furnished with elegant fabrics and furniture in a warm and neutral colour palette, it is a sublime space perfect for entertaining. During the day, the room is bathed in sunlight that pours through the large sliding doors, which provide access to the fantastic wrap-around balcony.

The dining table can seat up to 12 guests on one table and 18 guests when a second separate table is added to the dining area. There are also four en-suite bedrooms, an office and a service kitchen on this floor.

The entire ground floor in the main chalet is dedicated to entertainment. The focal point is a 17m indoor swimming pool set against floor-to-ceiling windows which have privacy blinds if desired. A floating stone path leads to the sunken outdoor hot tub where you can relax with the sensational views as a backdrop. You will also find a well-equipped gym, sauna, hammam, bar and billiards area, gaming room, poker room with panoramic wine cellar, games area, and an extraordinary bowling alley. There is also a large professional kitchen with service elevator on this floor.

The second property is set over three floors and was recently completed and finished to the same high standards. It has three chic en-suite bedrooms, an open plan kitchen, living and dining area, a 3D cinema with Atmos, a conference room, a massage room and a ski room. This property is not sold separately.

Guests will be looked after by our team of highly trained professionals, each selected for excellence in their field, attention to detail, and discretion.







FACILITIES



CHALET



Combining two glamorous chalets, linked internally through the garage or by an external walkway, Chalet Marmottière offers 1500m of ultra-luxurious living space and sleeps 18 guests in nine stylish bedrooms.



SPA & FITNESS



A haven of tranquillity and relaxation, this is one of the most luxurious in-chalet spa experiences in the Alps. Unwind in the 17m indoor pool, sunken outdoor hot tub, sauna, hammam or treatment room. Or, enjoy a private gym to rival a professional set-up - with all the latest equipment plus views.



ENTERTAINMENT

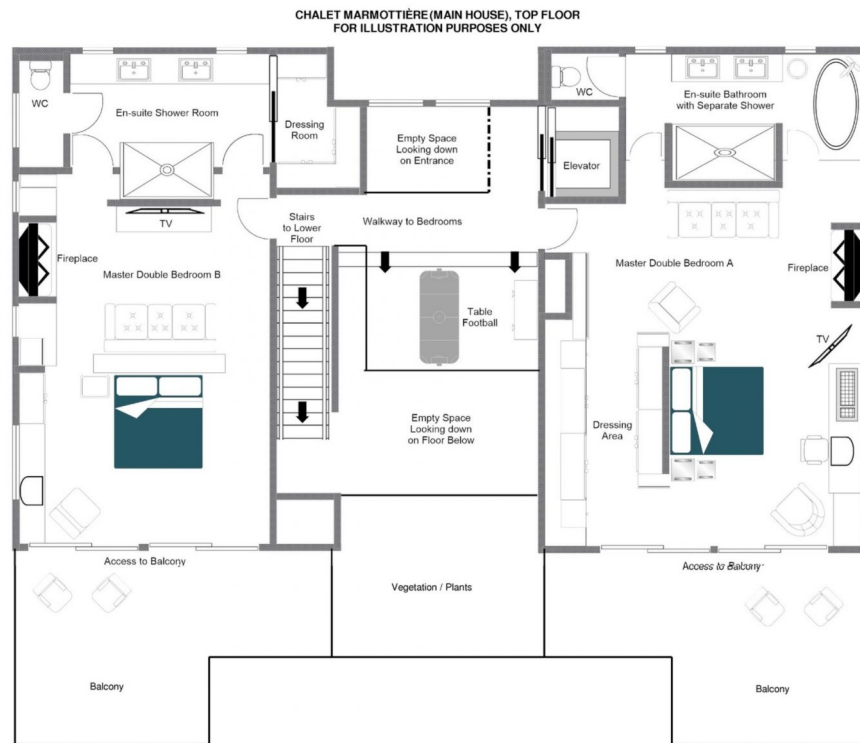


The chalet boasts all the entertainment facilities you would expect in an ultra-luxurious alpine home, and more. A plush 3D cinema, a poker room, a gaming room with two screens and professional gaming chairs, and even a private bowling alley comprise just a few of the extensive facilities to enjoy.





LAYOUT



TOP FLOOR (MARMOTTIÈRE - MAIN HOUSE)

- 1 Master bedroom suite (sleeps two, en-suite bathroom with separate shower, dressing room and private balcony)
- 1 Master bedroom suite (sleeps two, en-suite shower room, dressing room and private balcony)

LAYOUT



TOP FLOOR (MARMOTTIÈRE - SECOND HOUSE)

- Open plan kitchen, living and dining area
- Guest WC

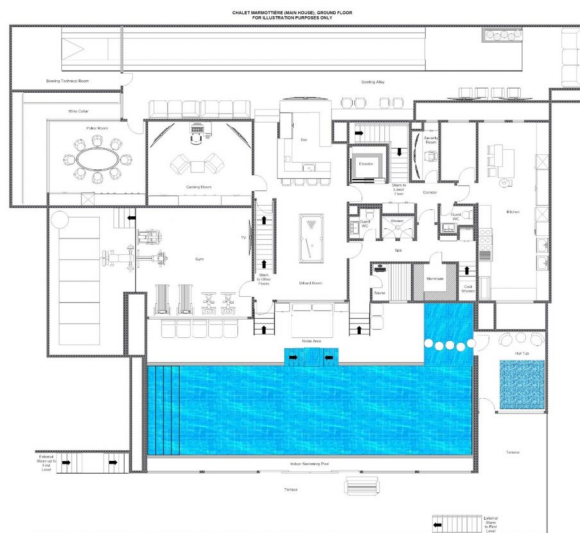
LAYOUT



FIRST FLOOR (MARMOTTIÈRE - MAIN HOUSE)

- Open plan living and dining area
 - Office
 - Service kitchen
- 1 Double bedroom (en-suite bathroom with separate shower)
 - 1 Double bedroom (en-suite shower room)
 - 1 Double bedroom (en-suite shower room)
 - 1 Double bedroom (en-suite shower room)
- Guest WC

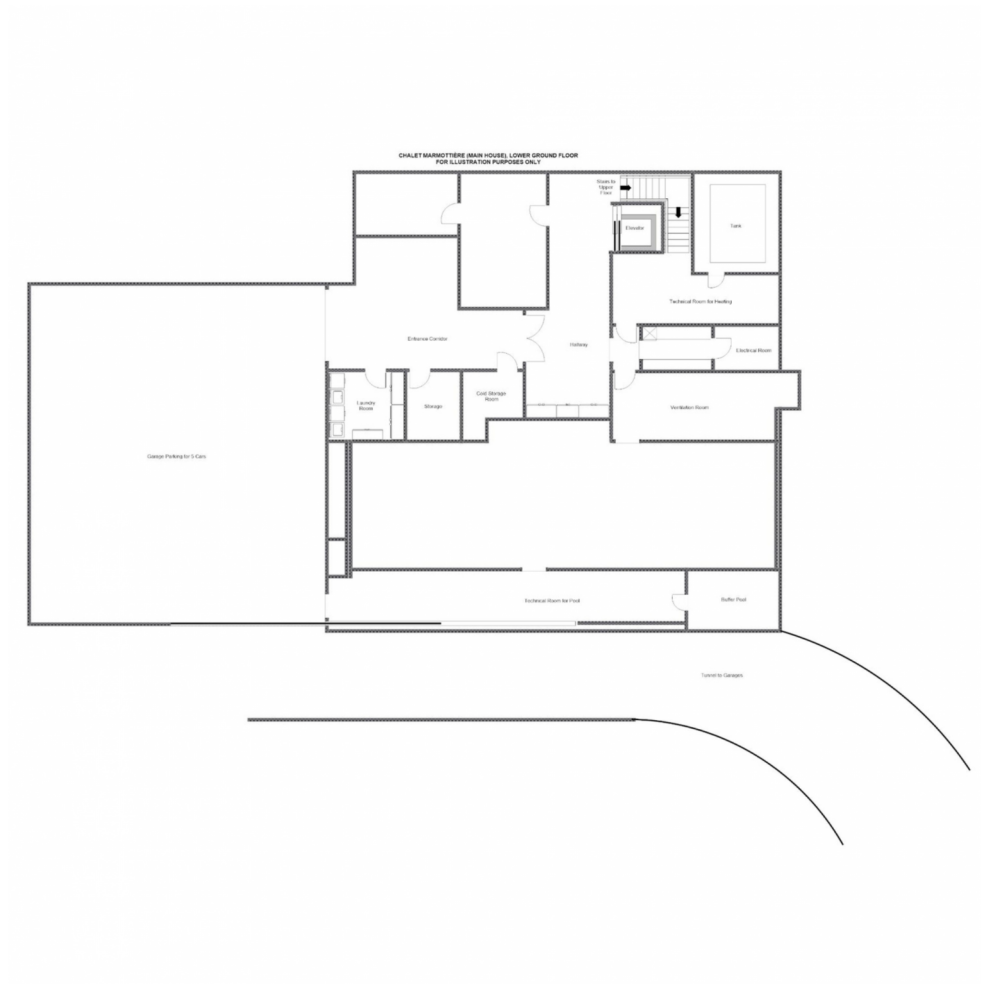
LAYOUT



GROUND FLOOR (MARMOTTIÈRE - MAIN HOUSE)

- Indoor Swimming pool
 - Outdoor hot tub
 - Gym
 - Sauna
 - Hammam
 - Spa
- Bar and billiards area
 - Gaming room
 - Bowling alley
 - Poker room
 - Wine cellar
 - Kitchen
 - 2 Guests WCs

LAYOUT

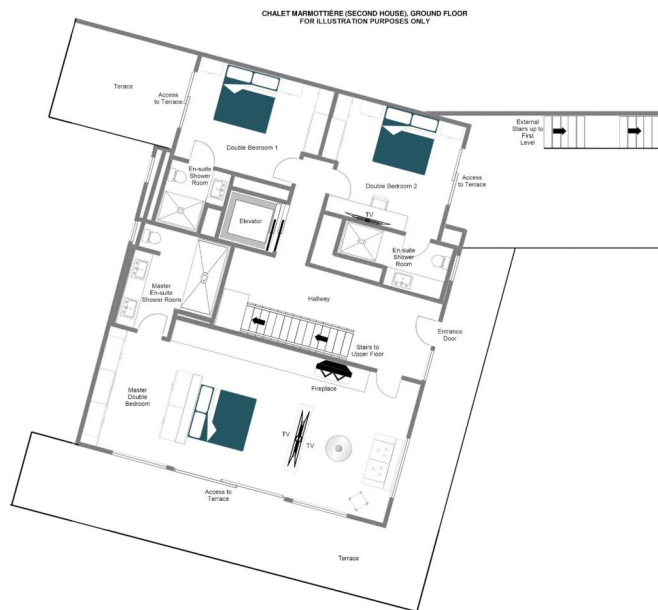


LOWER GROUND FLOOR
(MARMOTTIÈRE - MAIN HOUSE)



- Entrance hallway
 - Garage

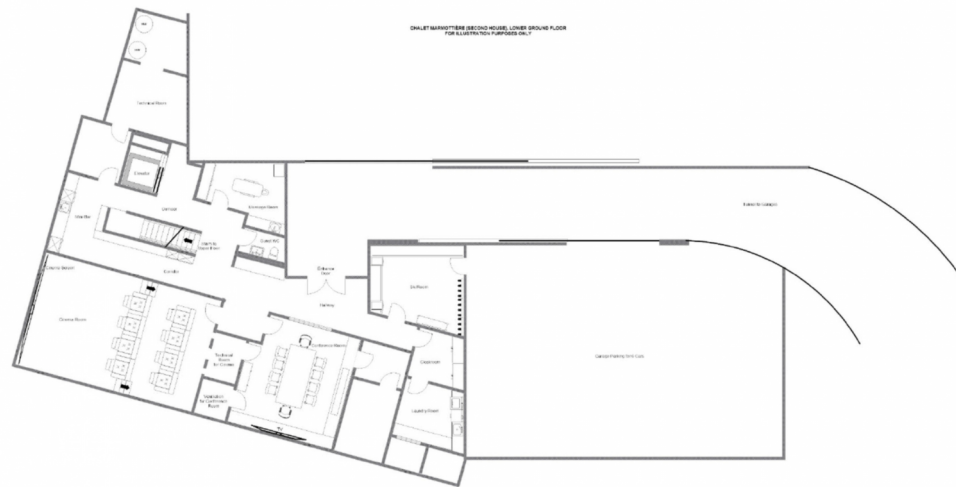
LAYOUT



GROUND FLOOR (MARMOTTIÈRE - SECOND HOUSE)

- 1 Master bedroom suite (sleeps two, en-suite shower room and terrace access)
 - 1 Double bedroom (en-suite shower room)
 - 1 Double bedroom (en-suite shower room)

LAYOUT



LOWER GROUND FLOOR
(MARMOTTIÈRE - SECOND HOUSE)

- Conference room
- 3D cinema room
- Massage room
 - Garage
 - Ski room
- Laundry room
 - Guest WC

LAYOUT

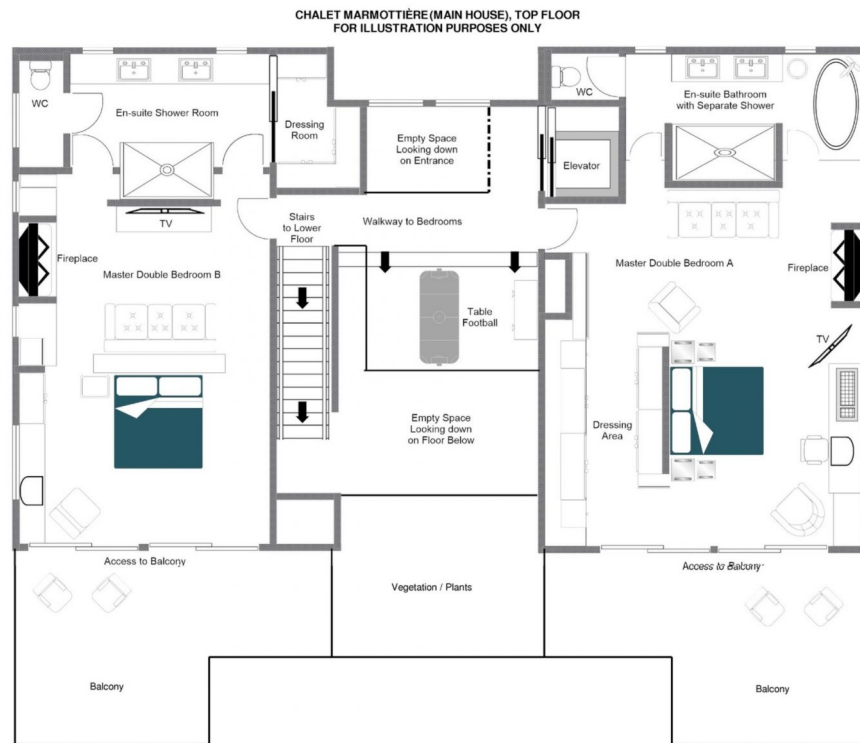


LOWER GROUND FLOOR
(MARMOTTIÈRE - MAIN HOUSE)



- Entrance hallway
 - Garage

LAYOUT



TOP FLOOR (MARMOTTIÈRE - MAIN HOUSE)

- 1 Master bedroom suite (sleeps two, en-suite bathroom with separate shower, dressing room and private balcony)
- 1 Master bedroom suite (sleeps two, en-suite shower room, dressing room and private balcony)

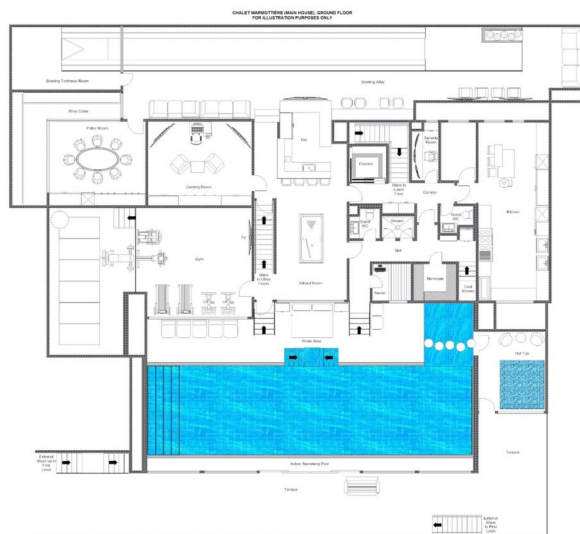
LAYOUT



TOP FLOOR (MARMOTTIÈRE - SECOND HOUSE)

- Open plan kitchen, living and dining area
- Guest WC

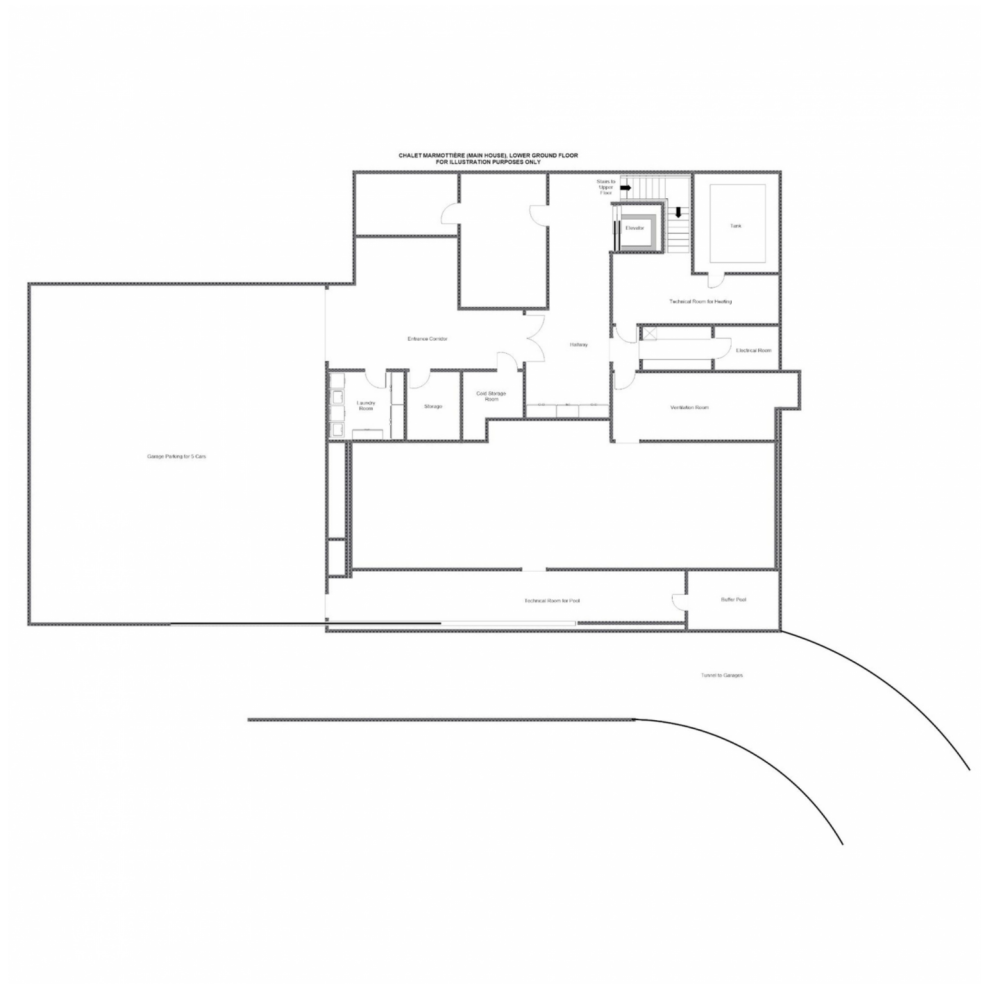
LAYOUT



GROUND FLOOR (MARMOTTIÈRE - MAIN HOUSE)

- Indoor Swimming pool
 - Outdoor hot tub
 - Gym
 - Sauna
 - Hammam
 - Spa
- Bar and billiards area
 - Gaming room
 - Bowling alley
 - Poker room
 - Wine cellar
 - Kitchen
 - 2 Guests WCs

LAYOUT

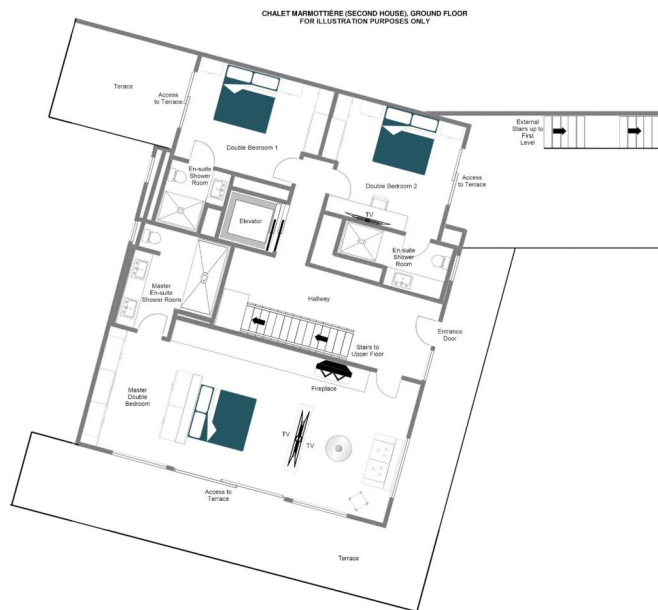


LOWER GROUND FLOOR
(MARMOTTIÈRE - MAIN HOUSE)



- Entrance hallway
 - Garage

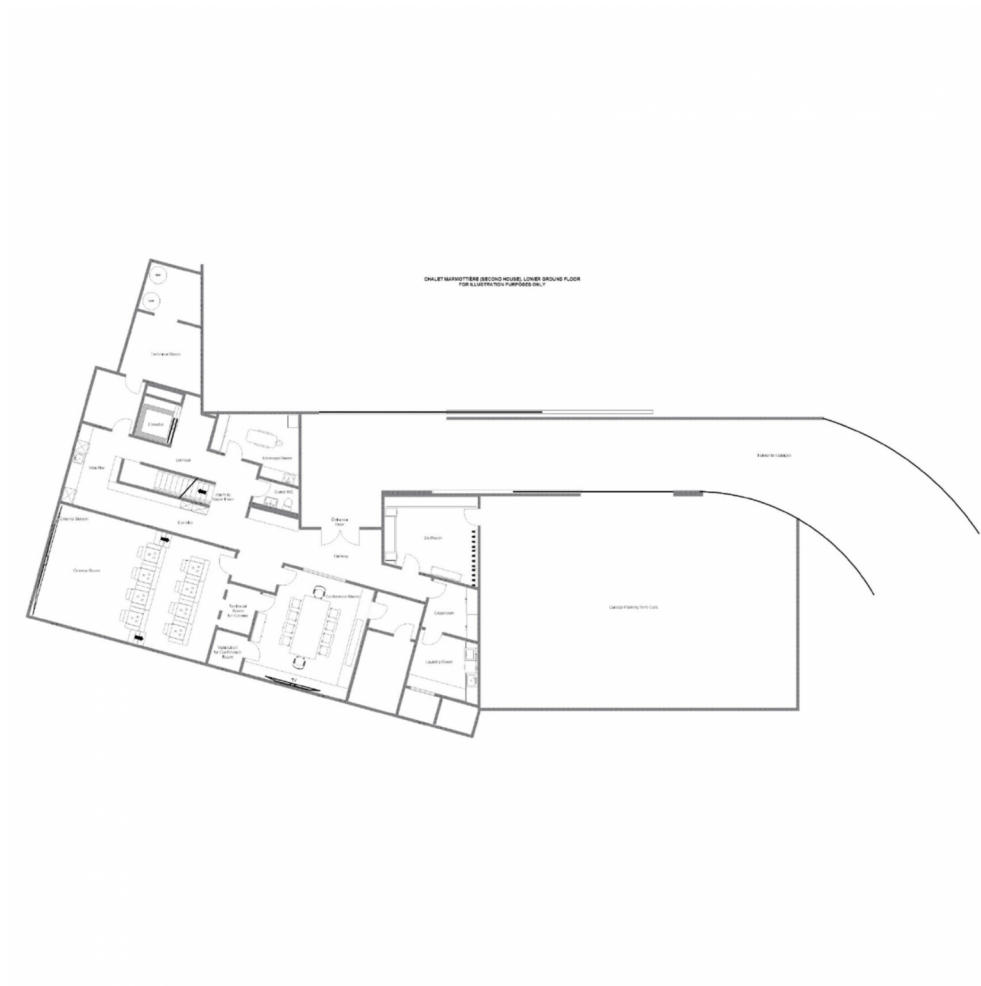
LAYOUT



GROUND FLOOR (MARMOTTIÈRE - SECOND HOUSE)

- 1 Master bedroom suite (sleeps two, en-suite shower room and terrace access)
 - 1 Double bedroom (en-suite shower room)
 - 1 Double bedroom (en-suite shower room)

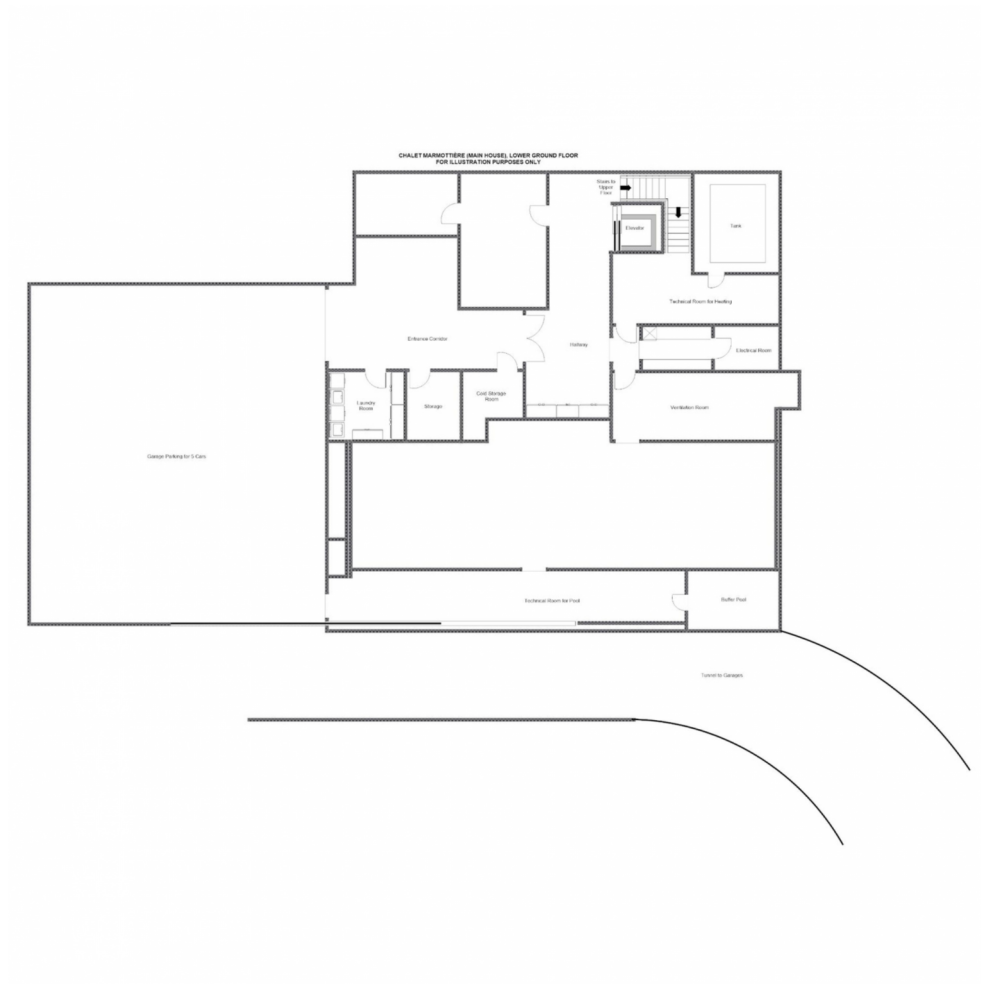
LAYOUT



LOWER GROUND FLOOR (MARMOTTIÈRE - SECOND HOUSE)

- Conference room
- 3D cinema room
- Massage room
 - Garage
 - Ski room
- Laundry room
- Guest WC

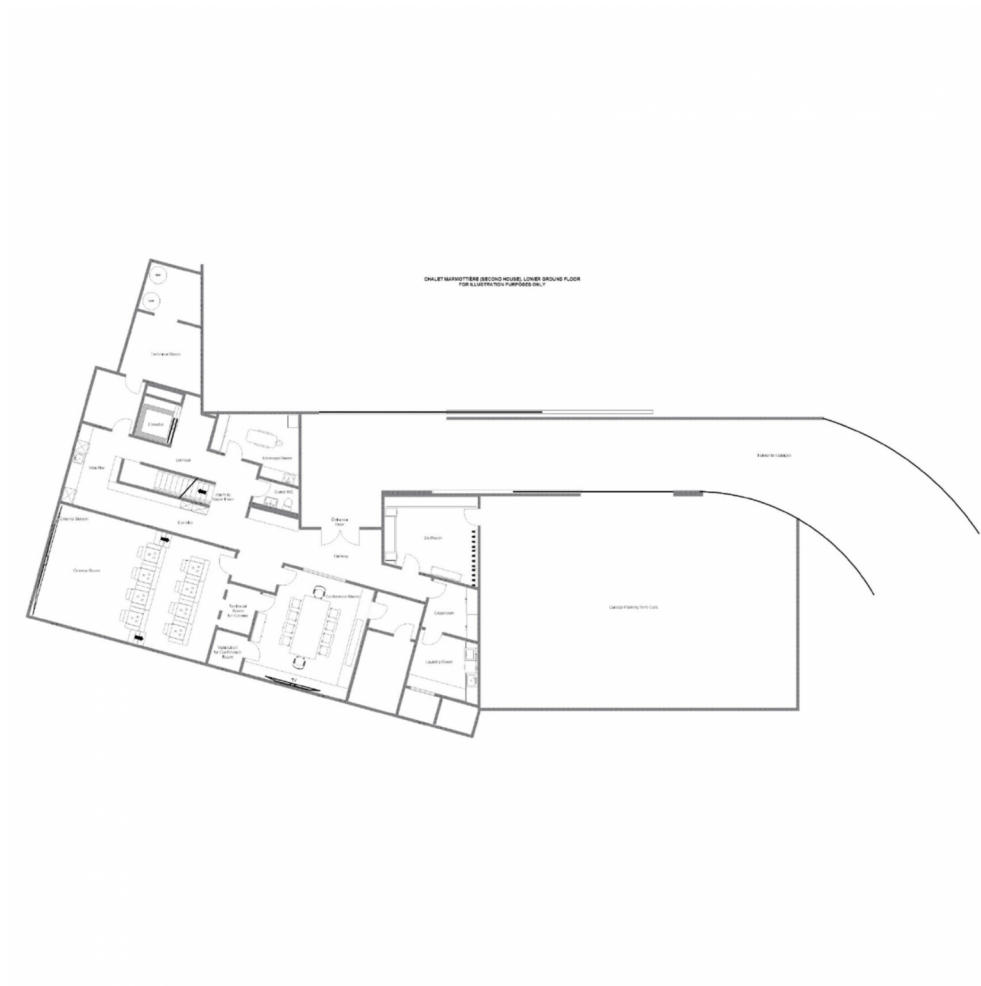
LAYOUT



LOWER GROUND FLOOR (MARMOTTIÈRE - MAIN HOUSE)

- Entrance hallway
- Garage

LAYOUT



LOWER GROUND FLOOR (MARMOTTIÈRE - SECOND HOUSE)

- Conference room
- 3D cinema room
- Massage room
 - Garage
 - Ski room
- Laundry room
- Guest WC





LOCATION

LOCATION

Nestled in the exclusive encave of Les Essert, the chalet is under 100m from the Le Rouge piste and the beginner nursery slopes.

PROXIMITY

Médran - 4-minute drive. Savoleyres - 2-minute drive.

Place Centrale - 6-minute drive







CHALET MARMOTTIÈRE



VERBIER