

# CHALET PIERRIER

---

SWITZERLAND

# VERBIER

# CHALET PIERRIER

VERBIER | Sleeps 10



A STYLISH ALPINE CHALET IN VERBIER WITH  
OUTDOOR HOT TUB, MASSAGE ROOM AND  
ELEGANT LIVING SPACES

# DESCRIPTION



Nestled in a peaceful area of Verbier, Chalet Pierrier is a beautiful contemporary alpine retreat designed for guests seeking both comfort and sophistication in the heart of the Swiss Alps. Blending modern architecture with warm mountain materials, this spacious standalone chalet provides a serene setting for a luxury ski holiday while remaining within easy reach of the village and slopes.

Spread across multiple levels, Chalet Pierrier offers five elegant en-suite bedrooms, generous living areas and dedicated wellness spaces, making it an ideal base for families or groups looking to experience the very best of Verbier.

The upper ground floor is the heart of the chalet, where a bright open-plan living and dining area creates a welcoming space to gather after a day on the mountain. Comfortable sofas are arranged around a striking fireplace, while large windows open onto a spacious terrace that frames the surrounding alpine landscape. The dining area sits alongside a sleek fully equipped kitchen and back kitchen, making both relaxed breakfasts and elegant evening meals effortless.

Also on this level, a cosy TV snug provides a quiet space to unwind with a film or book, while a small office area with a desk offers a convenient place for those needing to stay connected during their stay.

The ground floor is dedicated to rest and relaxation. Four beautifully designed double bedrooms are located on this level, each featuring its own en-suite bathroom or shower room and direct access to the lower terrace. Outside, guests will find a private outdoor hot tub, the perfect spot to soak tired muscles while enjoying the fresh mountain air and views of the surrounding peaks.

This floor also includes a dedicated massage treatment room, ideal for in-chalet wellness sessions after a day skiing, as well as a laundry room.

Occupying its own level, the master suite offers a private and tranquil sanctuary. The spacious bedroom benefits from a luxurious en-suite bathroom with a shower and a bath, with separate WC, a walk-in wardrobe and a desk area. A private balcony provides beautiful alpine views.

A well-equipped ski room with boot warmers and storage ensures guests are fully prepared for days on the slopes, while a garage on the top floor offers secure parking.

# FACILITIES



## INTERIOR

- Sleeps 10
- 250 Square metres
- 5 Bedrooms
- 5 Individual beds
- 5 Bathrooms
- 2 Additional WCs
- 10 Dining table seats
- 10 Living area seats

## APPLIANCES

- TV
- Sonos
- Wifi

## WELLNESS AND RELAXATION

- Balcony
- Massage treatment room
- Outdoor hot tub
- south-facing terrace

## ENTERTAINMENT

- TV room

## ADDITIONAL

- BBQ
- Family-friendly chalets
- Heated boot warmers
- New to Bramble Ski
- Private ski room
- Wood burning fireplace
- Outdoor Parking: 1



# LAYOUT



## TOP FLOOR

- Garage

## FIRST FLOOR

- Ski room with boot warmer and storage
- Guest WC
- Private storage (no access to guests)

## FIRST FLOOR (STAIRS ACCESS THROUGH LIVING ROOM)

- Primary bedroom (with separate WC and en-suite shower and bathroom)
- Desk
- Large walk-in closet
- Balcony

## UPPER GROUND FLOOR

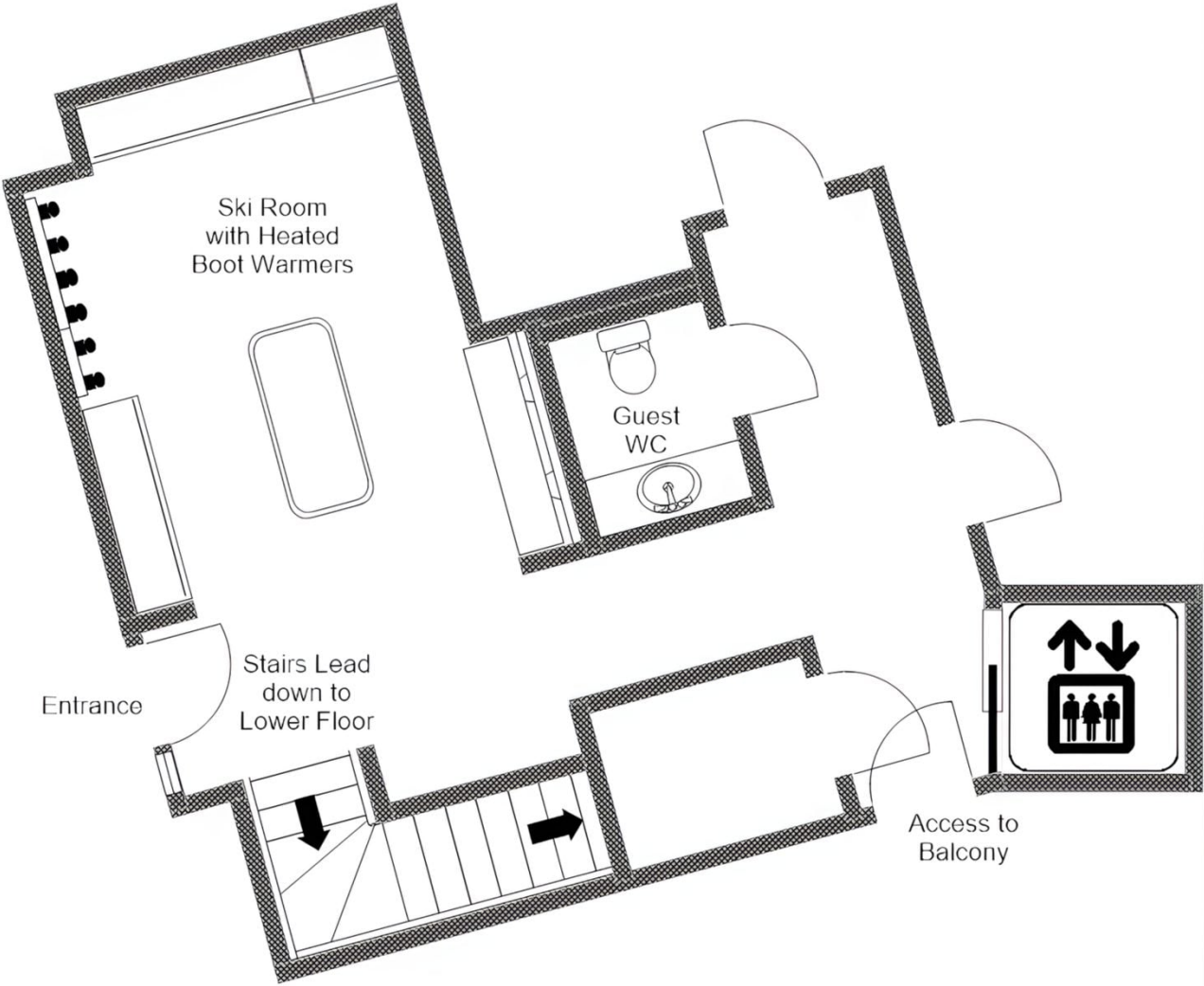
- Open plan living and dining area with large terrace (fireplace)
- Kitchen
- Back Kitchen
- TV Snug and office with a desk
- Guest WC

## GROUND FLOOR

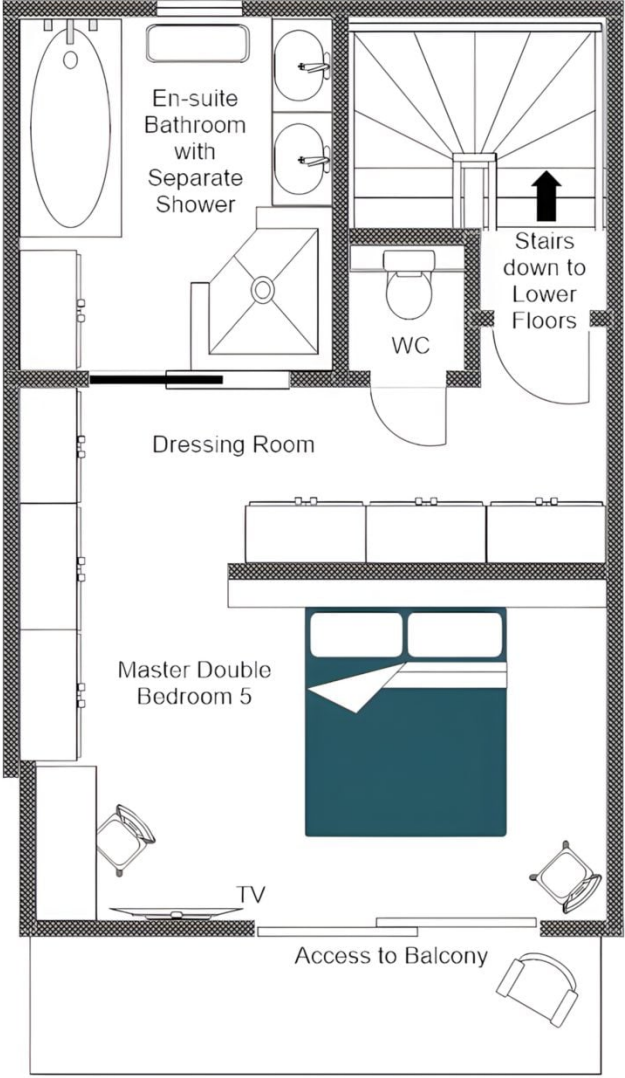
- Massage Treatment Room
- Laundry Room
- 1 Double bedroom (with en-suite bathroom with shower and terrace access)
- 2 Double bedroom (with en-suite shower room and terrace access)
- 1 Double bedroom (with en-suite bathroom and terrace access)
- Terrace with outdoor hot tub



**CHALET PIERRIER, FIRST FLOOR  
VIA BACK STAIRS  
FOR ILLUSTRATION PURPOSES ONLY**

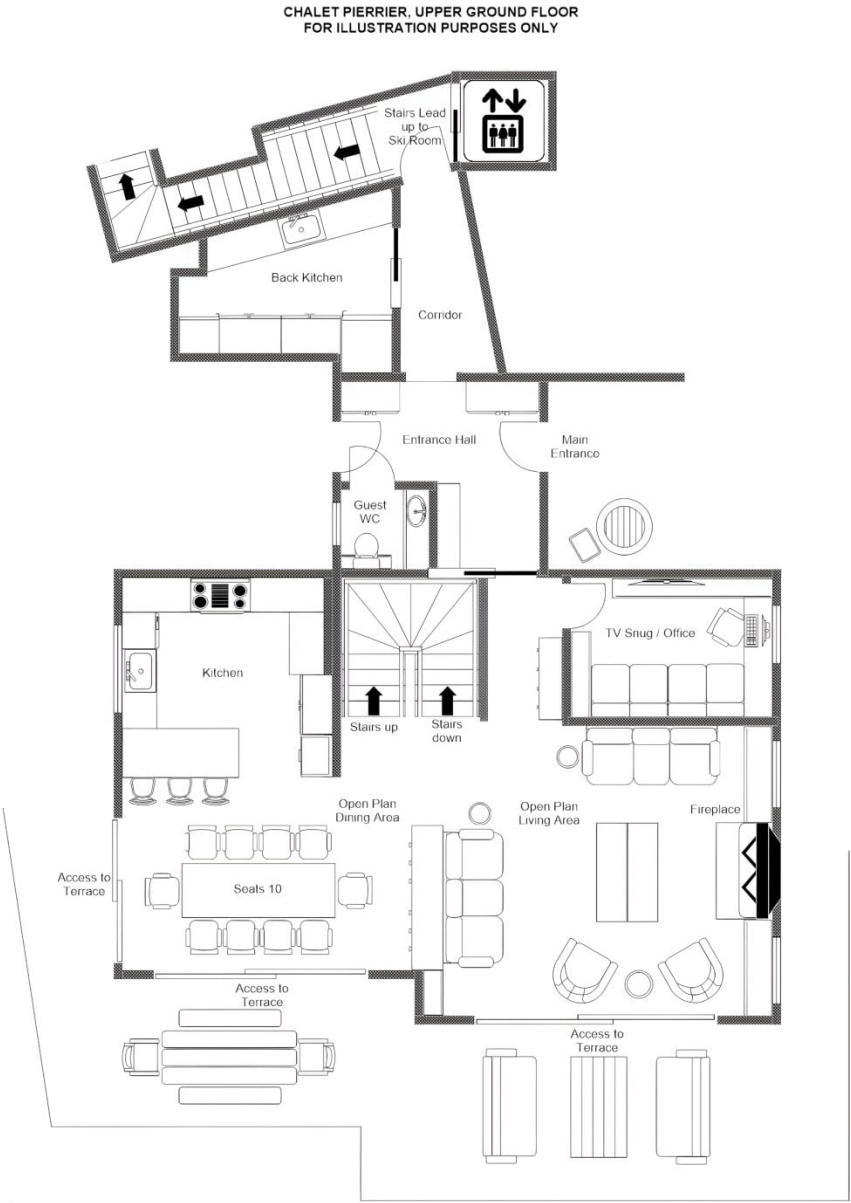


**CHALET PIERRIER, FIRST FLOOR  
(STAIRS ACCESS THROUGH LIVING ROOM)  
FOR ILLUSTRATION PURPOSES ONLY**



# FLOOR PLAN UPPER GROUND FLOOR

FOR ILLUSTRATION PURPOSES ONLY











# LOCATION



Chalet Pierrier is located just out of town and a matter of minute's walk to the piste down to the main lift station.

#### PROXIMITY

Médran gondola lift - 12-minute walk

Village centre - 15-minute walk or 6-minute drive

#### GOOGLE CO-ORDINATES

46.09485664258695, 7.235947405134563



bramble  
ski  
BY  
LE COLLECTIONIST