

# CHALET TESSELN

---

SWITZERLAND

VERBIER

# CHALET TESSELN

VERBIER | Sleeps 8+4



REDEFINING THE LUXURY CHALET EXPERIENCE

SKI-IN CHALET TESSELN occupies one of Verbier's most prestigious locations a short walk from the piste.

# DESCRIPTION



REDEFINING THE LUXURY CHALET EXPERIENCE

Snow permitting, this charming free-standing chalet is ski-in and ski-out (with approximately 100m of off-piste skiing), which is a rarity in Verbier.

Bright and spacious with uninterrupted views, the chalet is situated in a very private and sought-after location. Chalet Tesseln is set out over four floors and sleeps a total of 8+4 guests in five bedrooms, each with its own en-suite facilities.

The first floor is dedicated to the main living room, dining area, kitchen, and a guest WC. A terrace, with a sunny barbecue area and an outside dining space, is accessible from the dining room, and a further large balcony wraps around the front of the property perfect for soaking up the winter sun.

The open plan living area is a wonderful space in which to relax and unwind. Sink into the cosy sofa in front of the magnificent stone fireplace with a glass of champagne before dinner is served in the sophisticated dining area, which seats 10.

The impressive master bedroom with en-suite bathroom occupies the entire top floor and has its own private balcony and fireplace.

The ground floor is home to a further four bedrooms: a large children's bunk room sleeping four with an en-suite shower room and access to the terrace, a further children's bunk room with en-suite bathroom and access to the garden at the front of the property, and a two twin/double bedrooms, both with en-suite bathrooms and access to the garden.

Indulge in a post-ski steam in the beautiful hammam, or an after-dinner movie in the television room, which are both located on the lower ground floor.

There is also staff accommodation on this floor, comprised of a single bedroom with en-suite shower room and a small kitchenette - perfect for a nanny or member of private staff.

A laundry room, shower room, and the garage are also situated on this floor, with one indoor parking space available.

# FACILITIES



## INTERIOR

- Sleeps 8 + 4
- 400 Square metres
- 5 Bedrooms
- 11 Individual beds
- 5 Bathrooms
- 1 Additional WCs
- 10 Dining table seats
- 10 Living area seats

## APPLIANCES

- Hi-Fi/CD player/MP3 player
- Wifi

## WELLNESS AND RELAXATION

- Hammam/steam room
- south-facing balconies
- Spa

## ENTERTAINMENT

- TV room

## ADDITIONAL

- Cot/high chair available
- Private laundry facilities
- Private ski locker
- Shared Garage
- Ski-in & Ski-out
- Wood burning fireplace
- Indoor Parking: 1



# LAYOUT





## TOP FLOOR

- 1 master bedroom (en-suite bathroom, TV, private balcony)

## LIVING FLOOR (1ST FLOOR)

- Open plan living/dining area
- Open plan with kitchen (can be closed off)
- Small library
- Guest WC
- Outside barbeque area

## SLEEPING FLOOR (GROUND FLOOR)

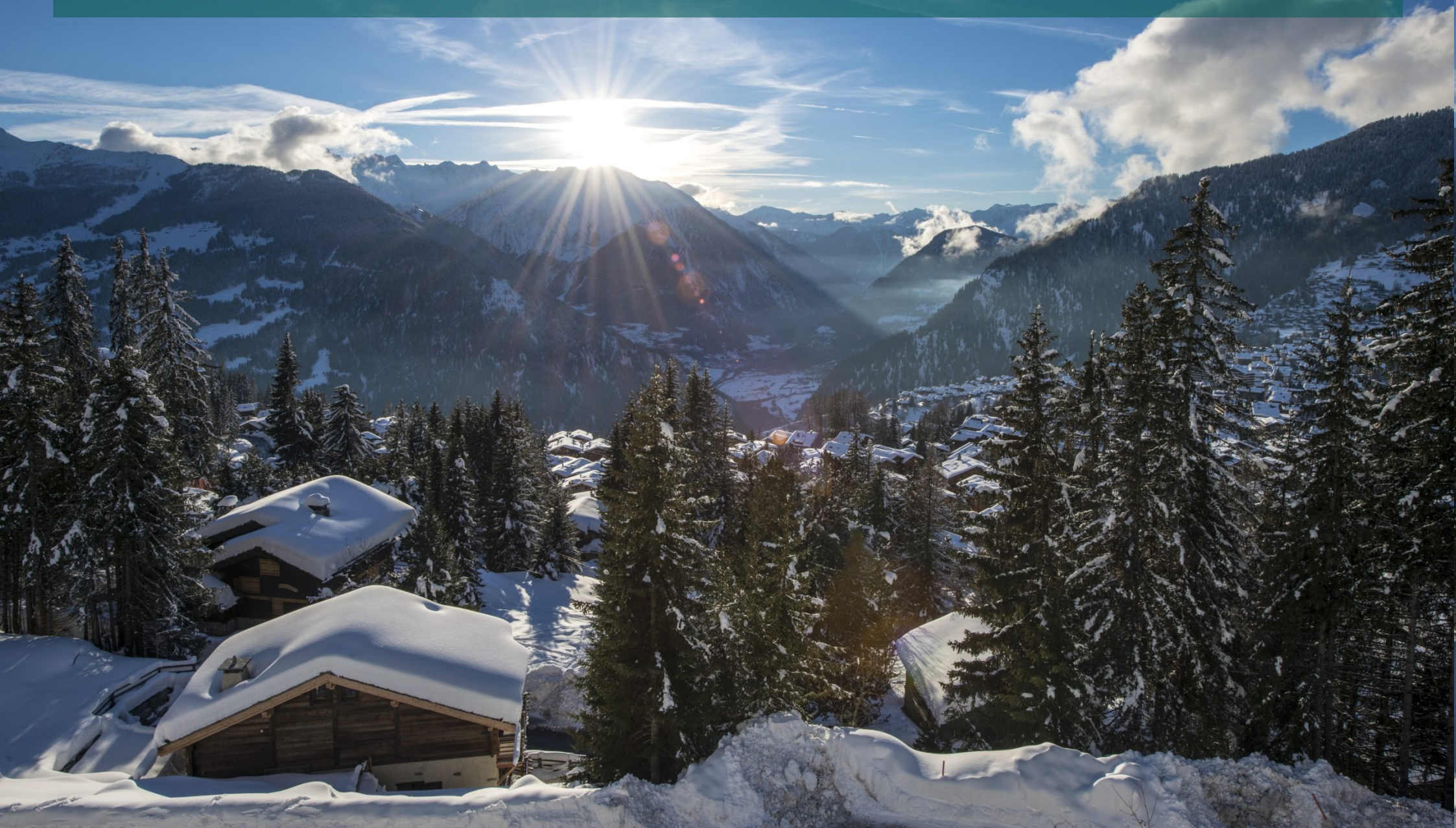
- 1 twin/double bedroom (Max 20cm separation, en-suite bathroom)
- 1 twin/double bedroom (Max 20cm separation, en-suite bathroom)
- 1 quad bunk room (sleeps 4. en-suite double shower room)
- 1 bunk room (sleeps 2 children, en-suite bathroom)

## LOWER GROUND FLOOR

- TV & family room
- Hammam and shower
- Boot room with heated floor
- Laundry room
- Staff apartment: single bed with en-suite shower room



# LOCATION



REDEFINING THE LUXURY CHALET EXPERIENCE

In good snow conditions it is possible to ski to and from within 100m of the property.

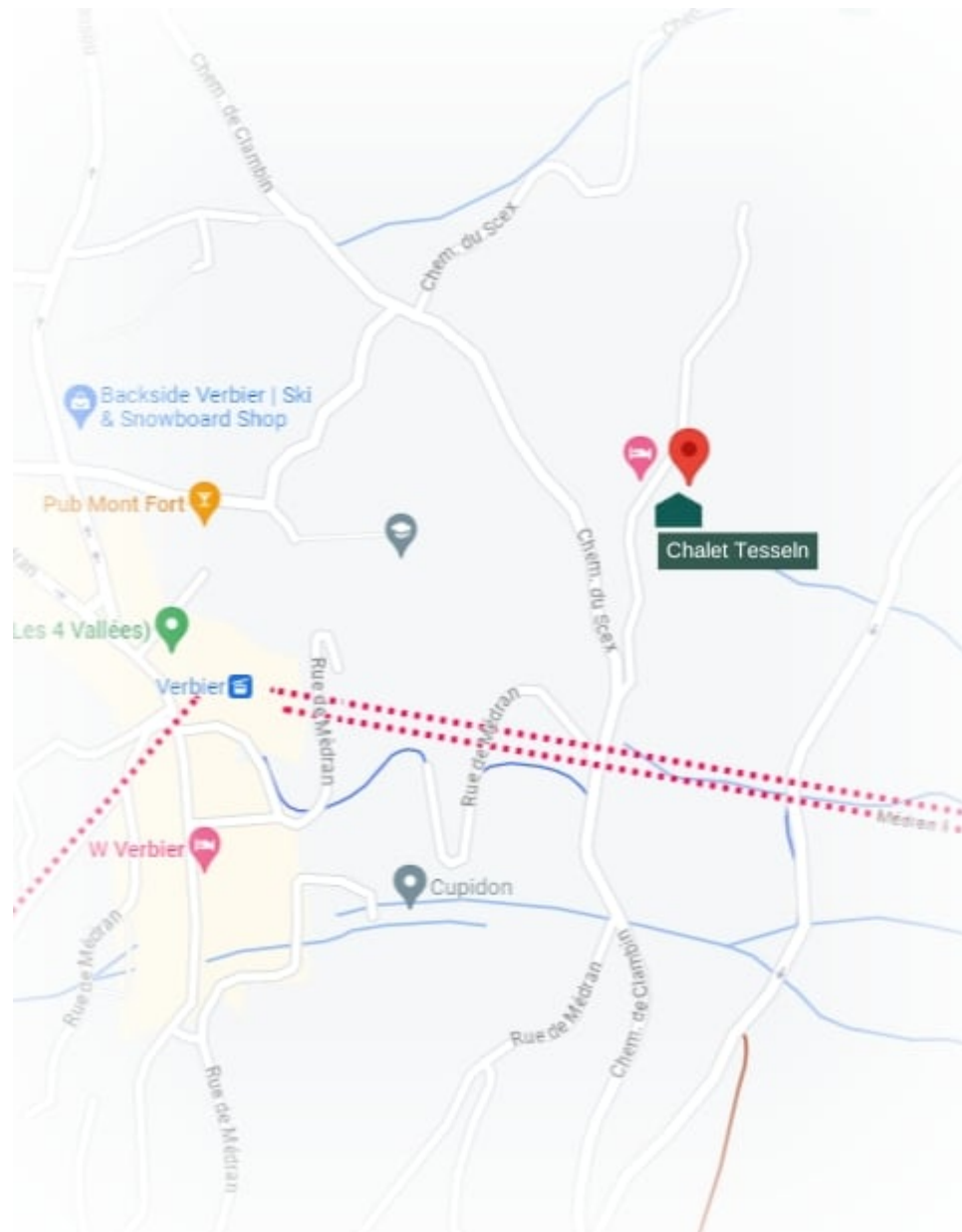
#### PROXIMITY

Médran - 10-minute walk or 5-minute drive Savoleyres - 4-minute drive

Place Centrale - 10-minute walk

#### GOOGLE CO-ORDINATES

46.094628211824244, 7.237293497141299





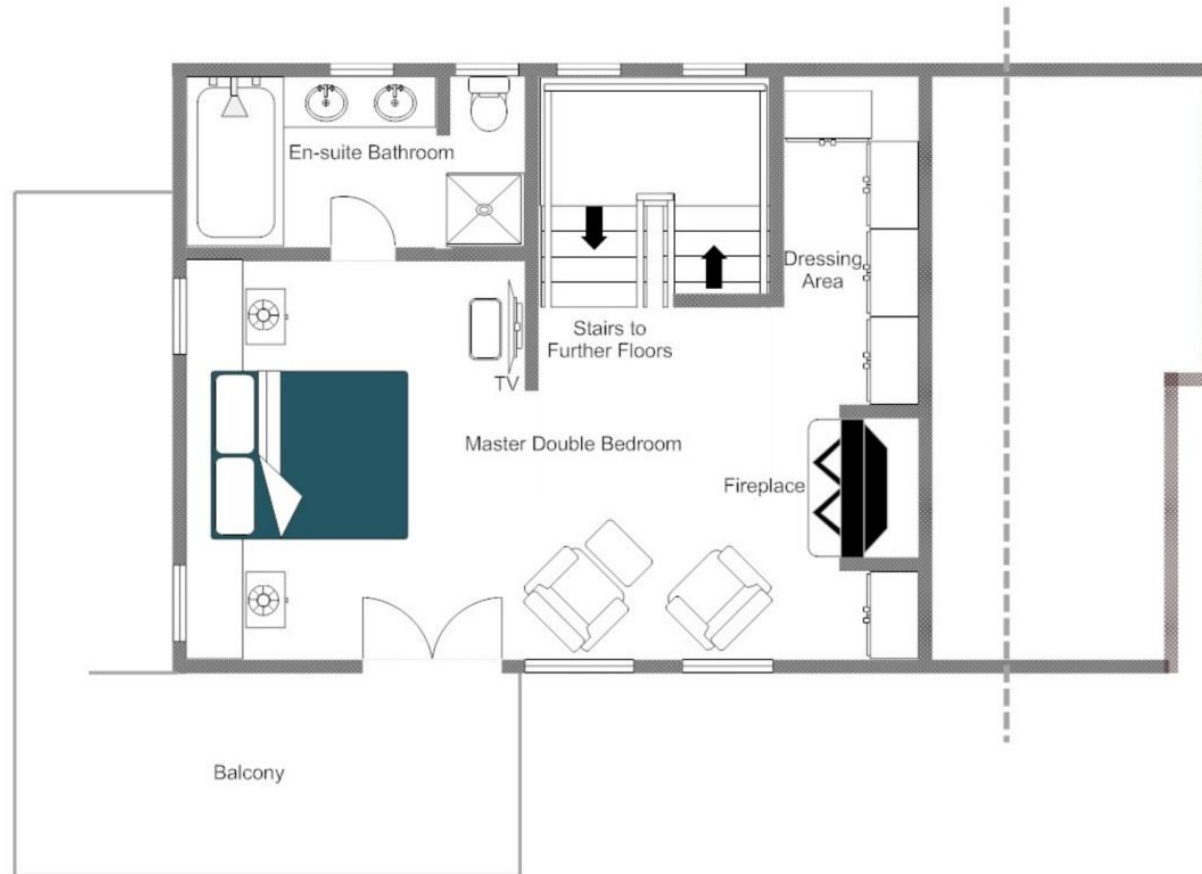




bramble  
ski  
BY  
LE COLLECTIONIST

REDEFINING THE LUXURY CHALET EXPERIENCE

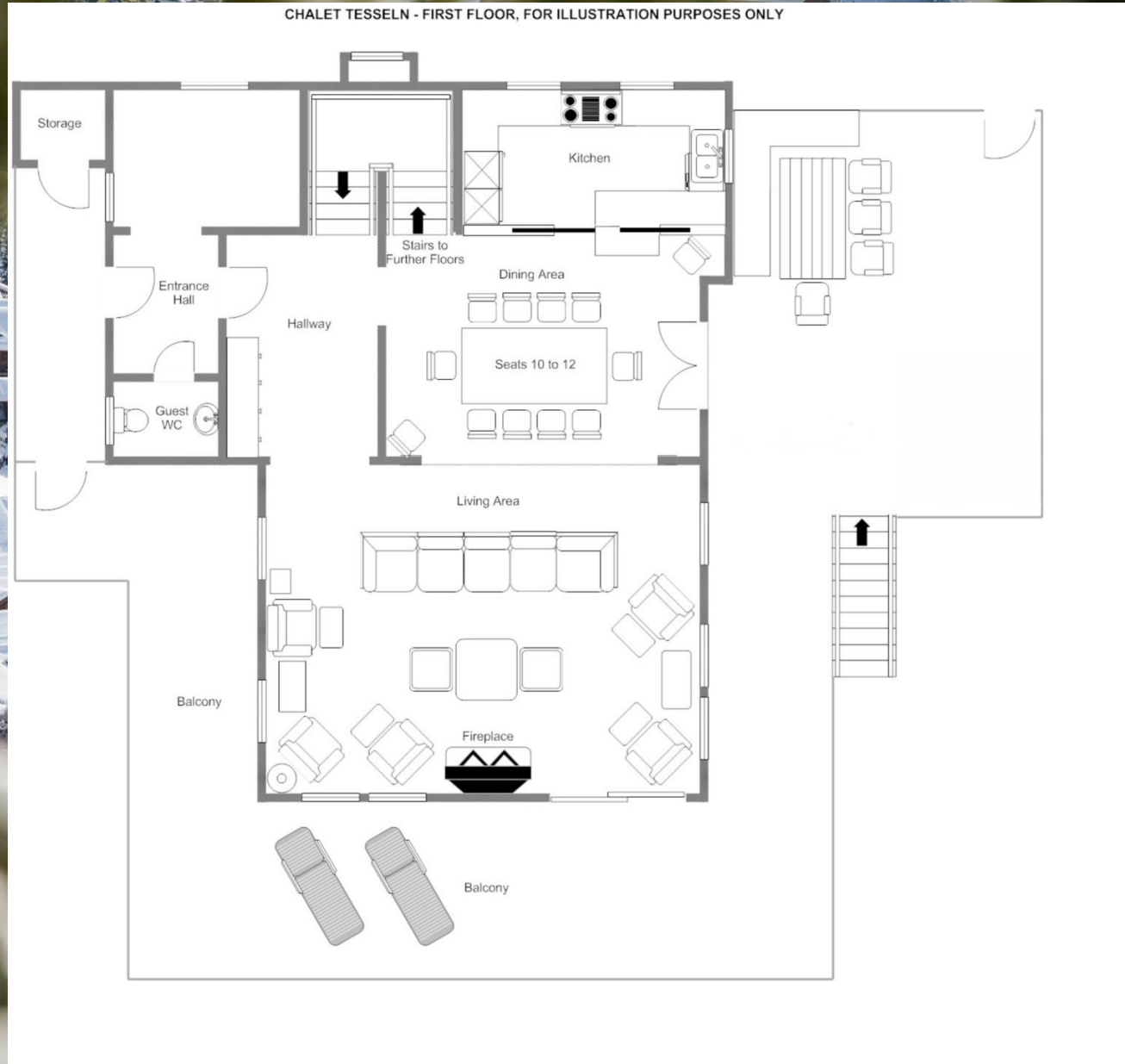
CHALET TESSELN - TOP FLOOR, FOR ILLUSTRATION PURPOSES ONLY



# FLOOR PLAN

LIVING FLOOR (1ST FLOOR)

FOR ILLUSTRATION PURPOSES ONLY







CHALET TESSELN - LOWER GROUND FLOOR, FOR ILLUSTRATION PURPOSES ONLY



