

# CHALET VALLON D'ARBI

---

SWITZERLAND

VERBIER

# CHALET VALLON D'ARBI

VERBIER | Sleeps 8



A REFINED ALPINE SANCTUARY IN VERBIER WITH  
SWEEPING MOUNTAIN VIEWS, OUTDOOR HOT TUB  
AND CINEMA ROOM.

# DESCRIPTION



Perched above the village, Chalet Vallon d'Arbi enjoys an elevated position just a few minutes' walk from the Les Esserts slopes, with breathtaking views across the Verbier valley. This beautifully appointed chalet combines the warmth of reclaimed alpine timber with a considered, contemporary interior, hand-selected furniture, organic textures and artisan details to create a space that feels as curated as it does welcoming. Heated floors run throughout the chalet, and a private elevator serves every level, ensuring comfort from the moment guests arrive. Spread across four floors, it is an ideal retreat for groups or families seeking an unhurried luxury ski holiday in the mountains.

The chalet benefits from a private indoor garage on the basement level, complete with an electric vehicle charging point. One floor up, the lower ground floor sets the tone for the chalet's commitment to both adventure and comfort. A ski room with boot warmers ensures every morning departure is seamless, while a cinema room equipped with a Bang & Olufsen sound system offers a wonderful retreat for restful afternoons and film nights. A guest bathroom with a shower completes this level.

The first floor is home to three elegantly appointed guest bedrooms, each with its own ensuite shower room and a dedicated workspace. Two rooms are configured as doubles, dressed in layered linens, textured throws and soft natural tones, with warm timber accents and alpine windows framing the snow-covered landscape beyond. The third is a twin room, equally considered in its styling. A laundry room on this floor adds a quiet practical touch.

The second floor is the social heart of the chalet. Beneath soaring vaulted ceilings with exposed timber beams, the sitting room is arranged around a stone fireplace, with deep curved sofas, sculptural coffee tables and a carefully composed palette of warm neutrals and earthy tones. Large picture windows draw the eye directly to the mountain panorama. A Bang & Olufsen sound system and a vinyl record player add an unexpected and characterful touch to the room's atmosphere. Tucked just off the living area, a beautifully designed bar corner enclosed by a crittall-style glass partition houses a wine fridge, spirits shelf and coffee station, equally suited to a morning espresso as an evening aperitif. The kitchen is sleek and fully equipped, with dark cabinetry and an island that encourages convivial cooking, flowing effortlessly into a generous dining area that seats up to ten. Wide doors open onto the terrace, where a traditional Nordic wooden hot tub steams against a backdrop of snow-covered slopes and open sky, accompanied by an outdoor sauna.

Before reaching the primary bedroom on the top floor, guests pass through a quiet study area. A long timber desk with Wishbone chairs and a Technogym exercise bike beside the window, a lovely transitional space that balances work and wellness. The primary bedroom itself is a serene sanctuary, rich in reclaimed wood panelling and soft ambient light. The ensuite shower room features a double sink, and a south-facing balcony opens directly from the room, offering some of the finest views in the chalet to wake up to each morning.

# FACILITIES



## INTERIOR

- Sleeps 8
- 607 Square metres
- 4 Bedrooms
- 5 Individual beds
- 5 Bathrooms
- 8 Dining table seats
- 8 Living area seats

## APPLIANCES

- Bluetooth speaker
- Smart TV
- Wifi

## WELLNESS AND RELAXATION

- Outdoor hot tub
- Outdoor Sauna
- Terrace

## ENTERTAINMENT

- Bar
- Dedicated cinema room

## ADDITIONAL

- Family-friendly chalets
- Heated boot warmers
- New to Bramble Ski
- Private laundry facilities
- Private ski room
- Wood burning fireplace
- Indoor Parking: 2



# LAYOUT



## LOWER GROUND FLOOR

- Cinema room with Bang & Olufsen sound system
- Ski room with boot warmers and storage
- Guest shower room

## GROUND FLOOR

- 1 Double bedroom (en-suite bathroom and TV)
- 1 Double bedroom (en-suite shower room and TV)
- 1 Twin bedroom (separated shower room and TV)
- Laundry room

## FIRST FLOOR

- Living room
- Kitchen
- Dining area (sitting up to 10 people)
- Terrace
- Outdoor hot tub
- Outdoor sauna
- Bar / coffee area

## SECOND FLOOR

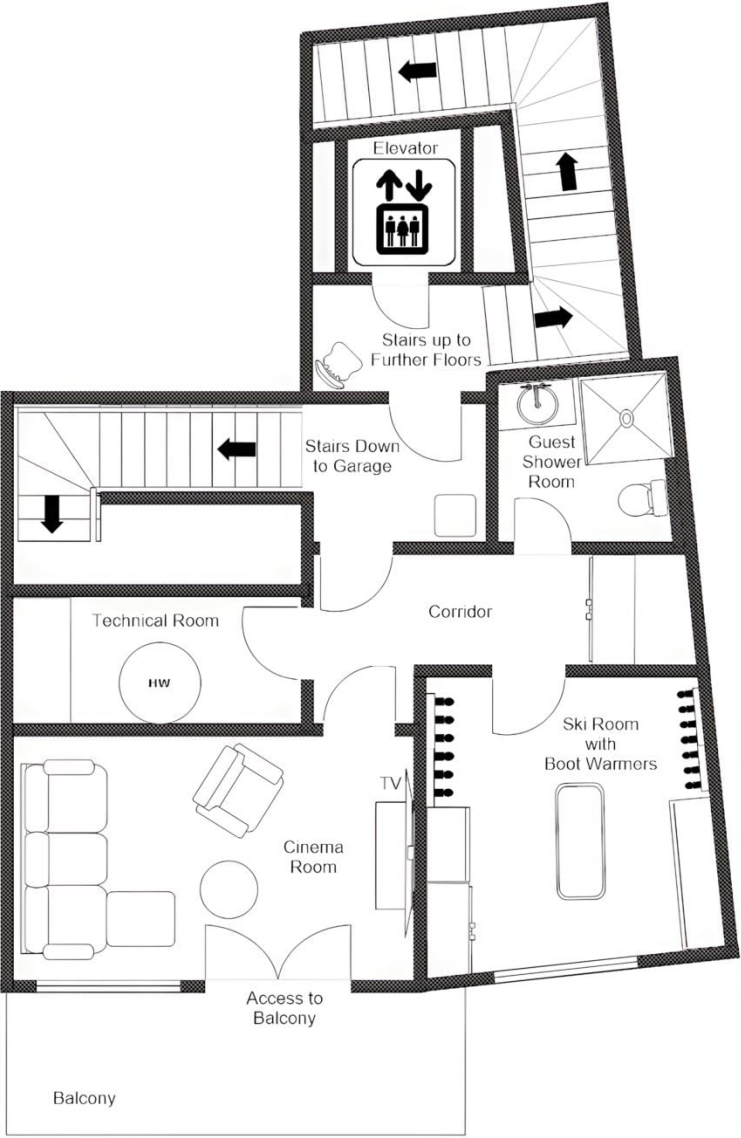
- Office
- Primary bedroom (en-suite shower room, TV and balcony access)
- Indoor bike



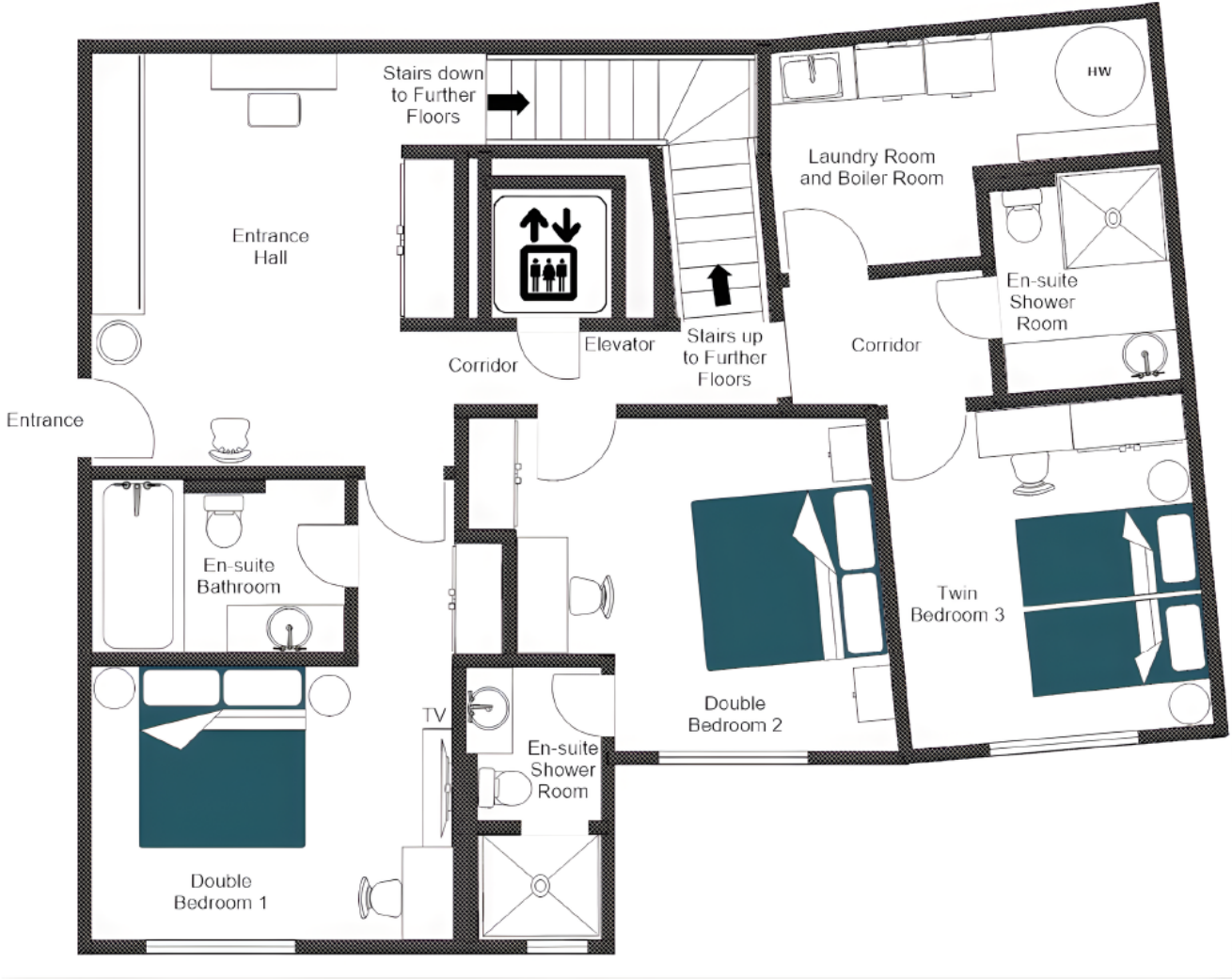




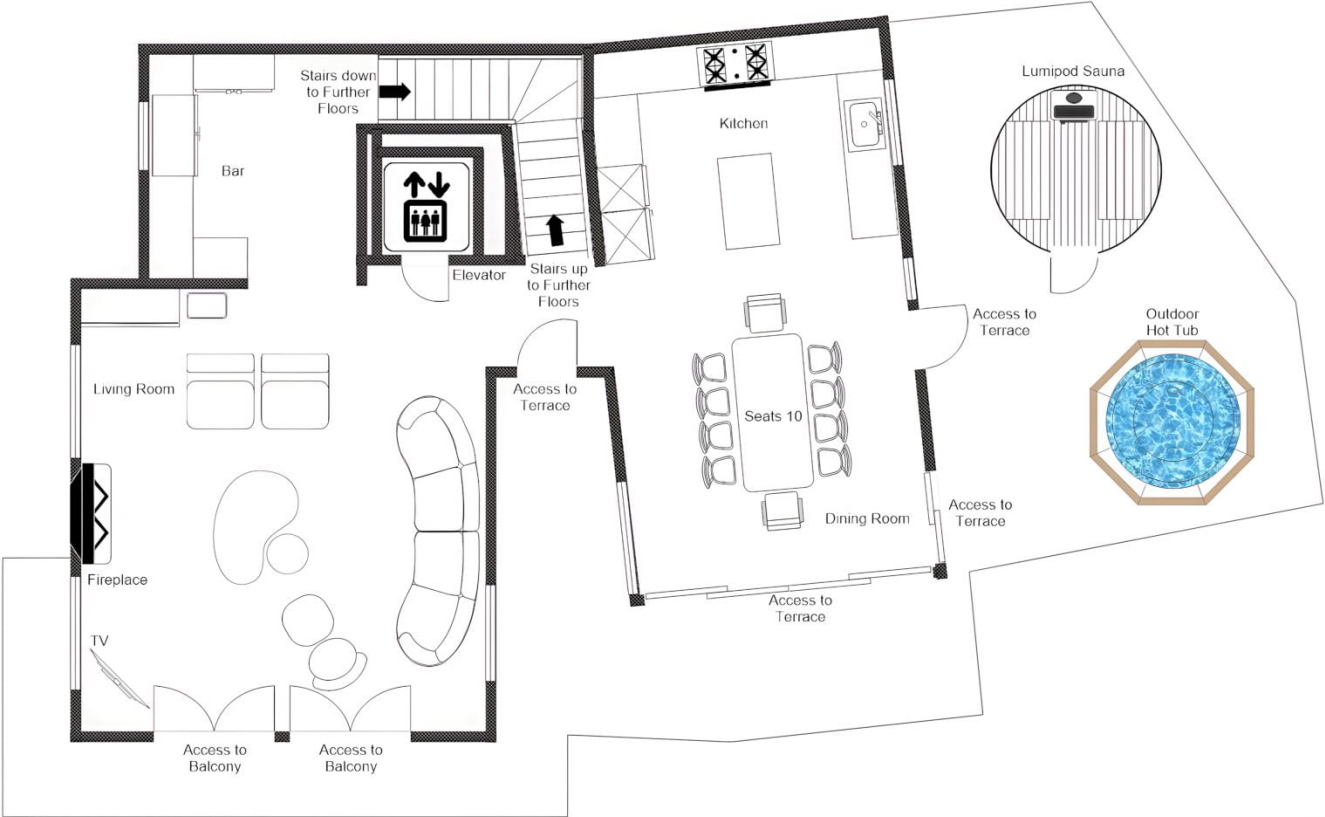
CHALET VALLON D'ARBY, LOWER GROUND FLOOR  
FOR ILLUSTRATION PURPOSES ONLY



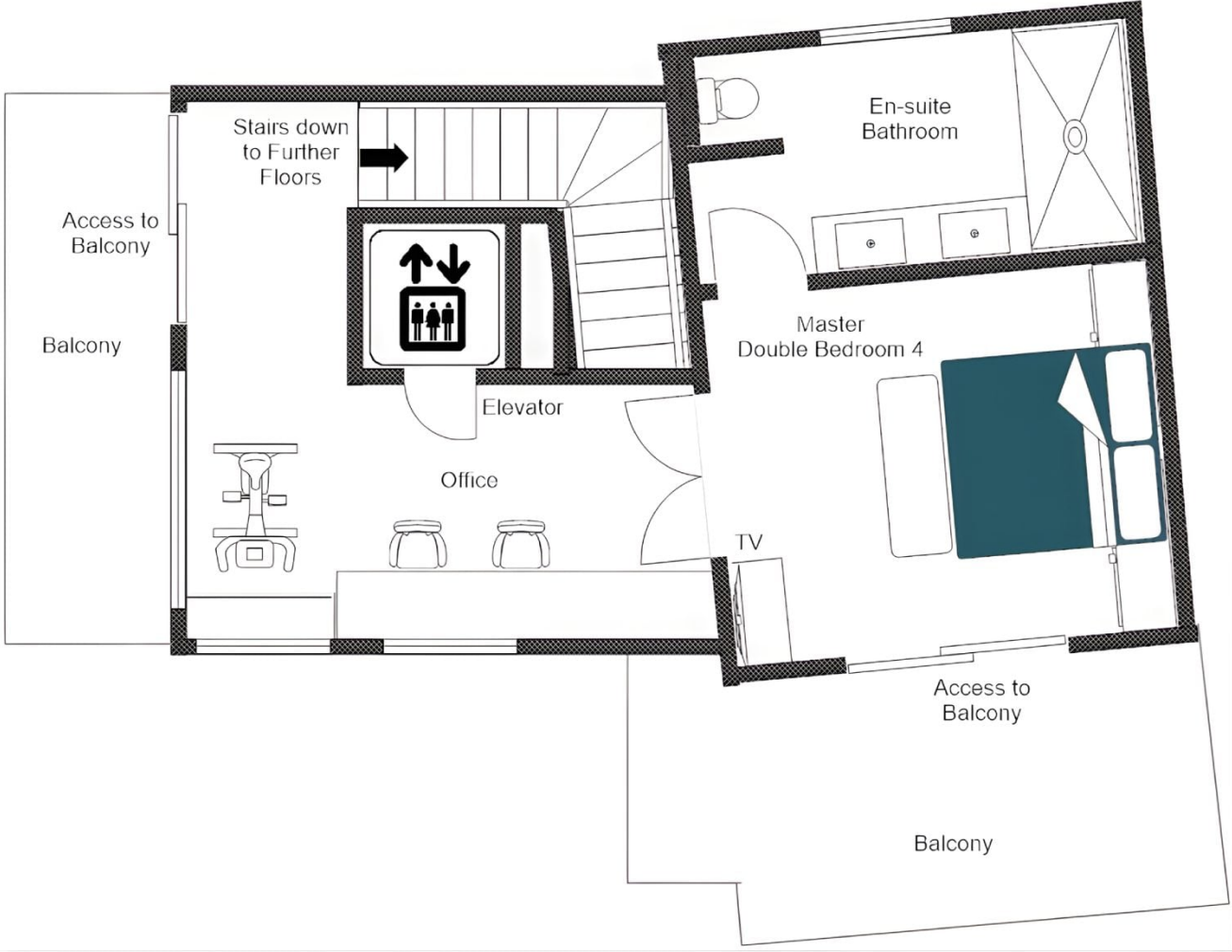
CHALET VALLON D'ARBY, GROUND FLOOR  
FOR ILLUSTRATION PURPOSES ONLY



CHALET VALLON D'ARBY, FIRST FLOOR  
FOR ILLUSTRATION PURPOSES ONLY



CHALET VALLON D'ARBY, SECOND FLOOR  
FOR ILLUSTRATION PURPOSES ONLY







# LOCATION



Chalet Vallon D'Arbi is located near the Savoleyres lift and Carrefour, with wonderful views across the valley.

#### PROXIMITY

Savoleyres - 5-minute drive  
Les Esserts - 5 minute drive  
Carrefour - 3-minute drive  
Médran - 7-minute drive

Place Centrale - 5-minute drive

#### GOOGLE CO-ORDINATES

46.109072, 7.227076





bramble  
ski  
BY  
LE COLLECTIONIST