

bramble
ski

PART OF
LE COLLECTIONIST

REDEFINING THE LUXURY CHALET EXPERIENCE

bramble
residences

CHRISTIANIA APARTMENT 2

SWITZERLAND

ZERMATT

CHRISTIANIA APARTMENT 2

ZERMATT | Sleeps 6



REDEFINING THE LUXURY CHALET EXPERIENCE

A WONDERFUL, MINIMALIST THREE-BEDROOM APARTMENT with a private outdoor hot tub in the heart of Zermatt and just 500m from the nearest ski lift. Christiania Apartment 2 comfortably sleeps six people, all bedrooms can be made up as twins or doubles and all have en-suite facilities. With access to the complex's gym, ski room and massage room, this apartment has all you could need for a luxurious winter retreat with family or friends.

DESCRIPTION



REDEFINING THE LUXURY CHALET EXPERIENCE

This stunning Zermatt chalet is located in prime position, just a short stroll from the centre of the village and only 500m from the Matterhorn Glacier Paradise which allows you direct access to the main ski area.

This beautiful apartment is perfect for a family or group of friends who want to relax and unwind in style. Set over one floor, you enter the apartment on the ground floor into the main hallway. From here you can access the three spacious bedrooms all of which have flat screen TV's, desks, and safes. The bedrooms can be made up as twins or doubles making it ideal for a family or group of friends. All bedrooms have either an en-suite bathroom or en-suite shower room.

The main hallway also opens out into the light and spacious living area. The fully equipped kitchen has everything you need and the dining table sits eight people comfortably should you wish to dine in during your stay.

A wood burning fire place sits in front of the comfy sofa and stylish seating area, a perfect space for relaxing with a glass of champagne after a hard day's skiing. This apartment features a flat screen TV and Wi-Fi access for your convenience and entertainment.

Light floods into the apartment through the floor to ceiling glass doors. They open out onto the south-facing terrace which looks out to the magnificent Matterhorn.

As a guest in the Christiania residence, you will have access to the complex's gym which is full of all the latest technology and equipment. There is also a massage room should you wish to enjoy an in-chalet massage during your stay. On the lower ground floor there is also a large ski room for the building.

This immaculate apartment is available fully catered, on a bed & breakfast basis, self-catered with daily housekeeping, or on an accommodation-only basis.

When taken on a fully catered basis our Bramble Ski house chef works out of the professional kitchen on the lower ground floor of the building and your dedicated host serves you in the privacy of your own apartment.

There is also a large, private laundry room with washer and drier.

FACILITIES



REDEFINING THE LUXURY CHALET EXPERIENCE

INTERIOR

- Sleeps 6
- 175 Square metres
- 3 Bedrooms
- 6 Individual beds
- 3 Bathrooms
- 1 Additional WCs
- 8 Dining table seats
- 6 Living area seats

APPLIANCES

- TV
- Wifi

WELLNESS AND RELAXATION

- Outdoor hot tub
- Shared access to gym
- south-facing terrace

ADDITIONAL

- Corporate chalets
- Cot/high chair available
- Family-friendly chalets
- Heated boot warmers
- Private laundry facilities
- Shared ski locker
- Wood burning fireplace



LAYOUT



REDEFINING THE LUXURY CHALET EXPERIENCE

GROUND FLOOR

- Open plan living area, dining area and kitchen
- 1 twin/double bedroom (TV, desk, terrace access, en-suite bathroom)
- 1 twin/double bedroom (TV, desk, terrace access, en-suite shower room)
- 1 twin/double bedroom (TV, desk, en-suite shower room)
- Guest WC
- Laundry room
- Terrace with outdoor hot tub





LOCATION



PROXIMITY

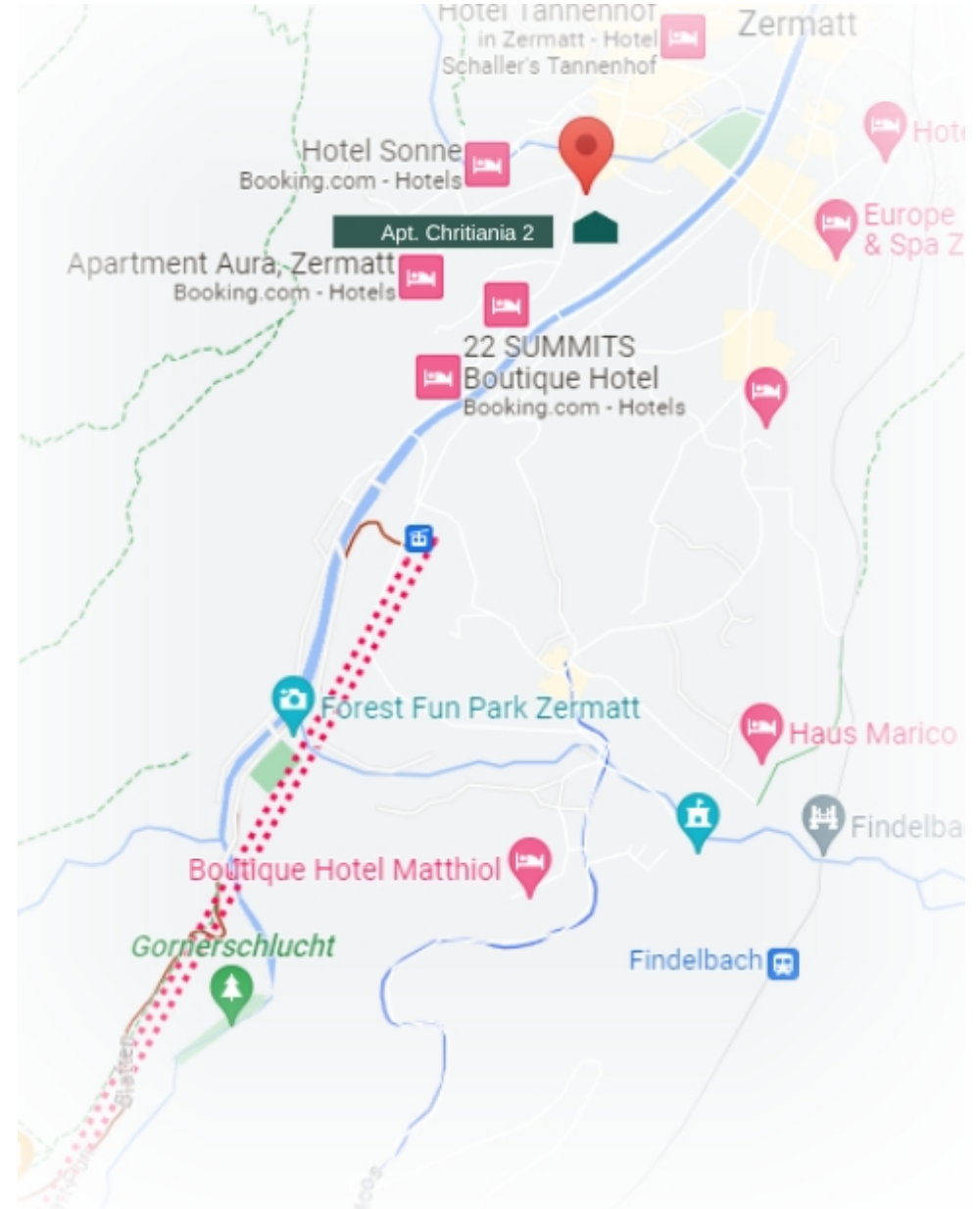
Klein Matterhorn lift station - 8-minute walk or 3-minute taxi ride

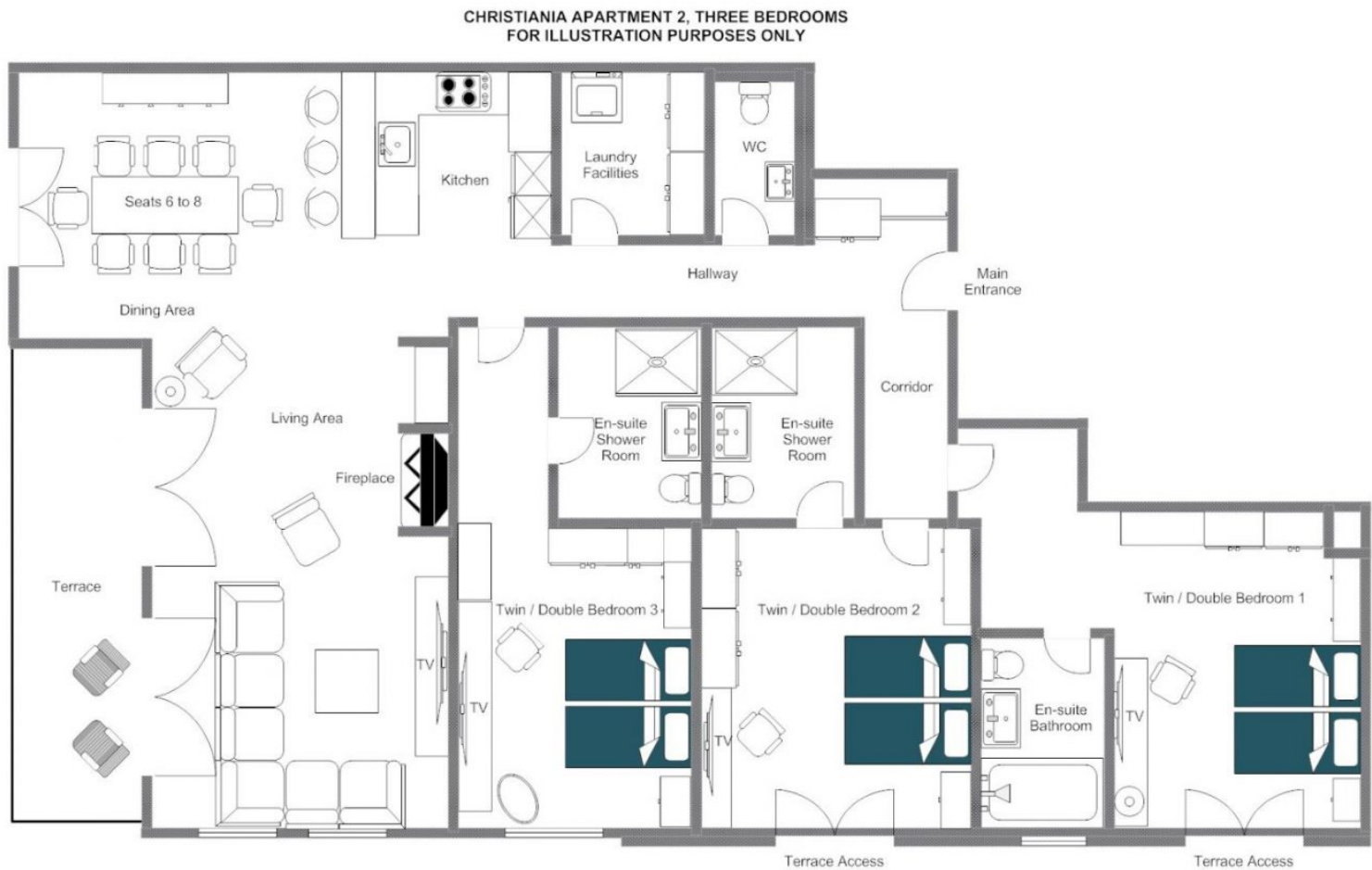
Sunnega lift station - 9-minute walk or 4-minute taxi ride

Village centre - 5-minute walk

GOOGLE CO-ORDINATES

46.018783, 7.745546







REDEFINING THE LUXURY CHALET EXPERIENCE





bramble
ski

PART OF
LE COLLECTIONIST

