

bramble
ski

PART OF
LE COLLECTIONIST

REDEFINING THE LUXURY CHALET EXPERIENCE

alpine
luxe

CRUX PENTHOUSE

A U S T R I A

ST ANTON

CRUX PENTHOUSE

ST ANTON | Sleeps 10+2



REDEFINING THE LUXURY CHALET EXPERIENCE

CRUX PENTHOUSE IS A SKI ENTHUSIAST'S DREAM, located only 150m away from St. Christoph's main ski lift, the ski run home brings you to just across the road from the apartment. Crux sleeps a maximum of 10+2 guests in five beautiful bedrooms. The property is designed to enjoy plenty of natural light and offers incredible views of the dramatic surrounding landscape.

DESCRIPTION



REDEFINING THE LUXURY CHALET EXPERIENCE

This stunning penthouse apartment is a sensational addition to the growing stable of St. Anton luxury chalets within the exclusive resort of St. Christoph.

Crux Penthouse is a truly beautiful home that delights in the owner's attention to detail. The interior embraces contemporary features and ensures maximum luxury for all guests. The authentic woods and timbers create the perfect alpine-inspired ambiance throughout.

For ski enthusiasts, the location is idyllic as the ski run home takes you to just across the road from the apartment and the St. Christophbahn lift is just 150m from Crux Penthouse. You can reach the top of Valluga, which is the highest point of the Arlberg ski region, faster from St. Christoph than any of the other resorts in the Alberg.

You enter the property into the entrance hallway where a short walkway leads you to the large open-plan living area. The high ceilings afford spectacular panoramic views across the Verwall valley and the use of space makes you feel like you are in a free-standing chalet. This beautiful room offers plenty of space to socialise and entertain. Two comfy sofas surround a large wood-burning fireplace which is the focal point of the room.

Large French windows open out onto the wonderful terrace where stylish seating is perfectly positioned to take in the incredible views and provides an ideal spot for guests to enjoy a glass of champagne in the warmer spring months. By day, light floods into the room, and in the evening, the sensitive lighting and incredible mountain backdrop transforms the apartment into a wonderful, sophisticated setting.

Beyond this room is a wonderful TV snug ideal for catching up on the latest movie after dinner. The well-equipped kitchen and open-plan dining table are set back from the main seating area. The solid wood dining table seats up to 12 guests and sits beneath an impressive chandelier creating the perfect space to entertain.

There are five beautiful bedrooms in the penthouse. There are four double bedrooms, two of which can be made into twin bedrooms (with a small gap between the beds). All the bedrooms have either en-suite bathrooms or en-suite shower rooms. There is a wonderful bunk bedroom which can sleep up to four children, also with an en-suite bathroom.

For guests wanting ultimate relaxation, there is a wonderful sauna and bucket shower in the apartment.

FACILITIES



REDEFINING THE LUXURY CHALET EXPERIENCE

INTERIOR

- Sleeps 10 + 2
- 260 Square metres
- 5 Bedrooms
- 10 Individual beds
- 5 Bathrooms
- 1 Additional WCs
- 12 Dining table seats
- 12 Living area seats

APPLIANCES

- Apple TV
- Sonos
- Wifi

WELLNESS AND RELAXATION

- Sauna

ENTERTAINMENT

- TV room

ADDITIONAL

- Cot/high chair available
- Heated boot warmers
- Private laundry facilities
- Shared ski locker
- Wood burning fireplace
- Indoor Parking: 3



LAYOUT



REDEFINING THE LUXURY CHALET EXPERIENCE

TOP FLOOR

- Situated over one floor
- Open plan kitchen, dining and living area
- 1 master double bedroom (en-suite bathroom, TV, desk)
- 1 double bedroom (en-suite bathroom, TV)
- 1 twin/double bedroom (en-suite bathroom, TV)
- 1 twin/double bedroom (en-suite shower room, TV)
- 1 quad bunk room (en-suite shower room, TV desk)
- TV room
- Guest WC
- Sauna and bucket shower







LOCATION



REDEFINING THE LUXURY CHALET EXPERIENCE

PROXIMITY

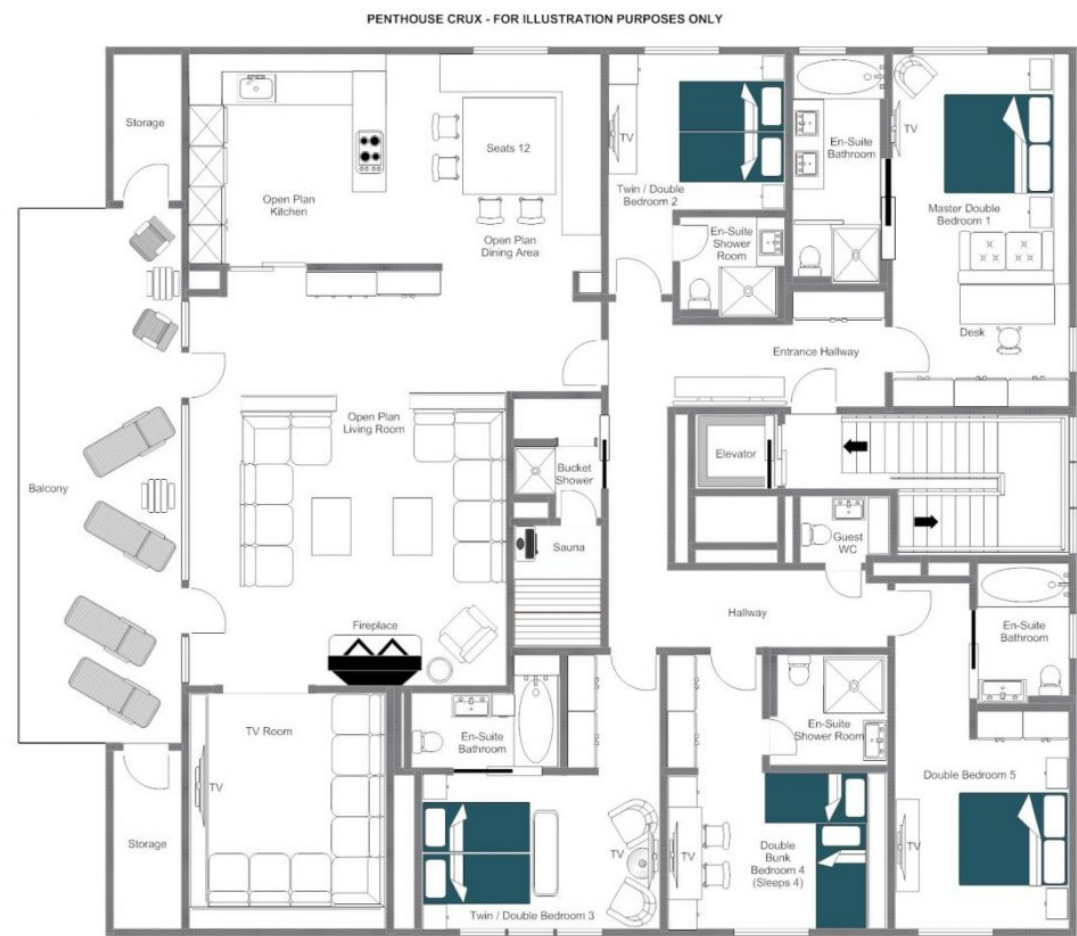
St. Christophbahn - one minute walk - The St. Christophbahn is connected to St. Anton on the lift system.

St. Anton is a nine-minute drive away.

GOOGLE CO-ORDINATES

47.126327, 10.213605









bramble
ski
PART OF
LE COLLECTIONIST