

# DENT BLANCHE

---

VERBIER

# DENT BLANCHE

— ◆ —  
VERBIER



◆ Verbier, Switzerland  
◆ Indoor pool

◆ 950 m2 of residence  
◆ Outdoor hot tub

◆ Sleeps 12  
◆ Dedicated cinema room

◆ Wellness Spa  
◆ Gym

TUCKED AWAY IN A QUIET LOCATION AT THE HEART OF THE VILLAGE IS DENT  
BLANCHE, ONE OF VERBIER'S MOST INCREDIBLE ALPINE LUXURY CHALETs.



Chalet Dent Blanche is all about delivering luxury. The property boasts an impressive private spa area and cinema room so that even off the slopes you can enjoy the ultimate indulgent Verbier experience. This gorgeous chalet has been intricately designed using authentic traditional woods to reflect the local architecture of Verbier, with an opulent flair. The interior features a fusion of stunning artefacts, contemporary furniture, and modern art all complementing one another to create a vision of alpine chic.



# ONE OF VERBIER'S MOST SPECTACULAR PRIVATE HOMES, DENT BLANCHE IS THE PERFECT ALPINE HOME TO SHARE WITH FRIENDS AND FAMILY.



Hidden between the trees, in a secluded location at the heart of the village, shimmers a true gem of Verbier - the stunning Chalet Dent Blanche, one of the resort's most incredible private homes. Situated on the edge of the Verbier plateau, the chalet sleeps a maximum of 12 guests.

Chalet Dent Blanche has been expertly designed, drawing on authentic materials and architectural influences of the local area to create something spectacular. Gorgeous traditional wood and alpine detailing feature throughout the property while intricate antiques, handmade furniture, and contemporary interior design blend to create the ultimate in alpine chic.

Enjoy a wonderful ambience throughout the property created by the latest in audio and visual systems. The chalet even enjoys its own plush dedicated cinema room located on the spa level.

The property is set out over four floors, linked by stairs and a lift.

The main entrance of the chalet leads you to the second floor where you will find an elegant dining room and beautifully furnished living areas. Whether it is putting your feet up by a roaring log fire or sipping on champagne in the modern kitchen area, the living space in Chalet Dent Blanche will allow you to relax in stylish alpine fashion. There is also a contemporary guest restroom on this floor.

Ascending the stairs to the third floor you will enter the wonderful master double bedroom and its own private en-suite bathroom. A spacious twin bedroom with two queen-size beds with an en-suite bathroom is also located on this floor.

On the first floor, leading downstairs from the living room, there are two stylish double bedrooms with en-suite facilities as well as a further twin bedroom with an en-suite shower room and a delightful double children's bunk room, sleeping two, with an en-suite shower room.

Access to the large ski room with boot heaters is also found on this floor. Here your equipment will be kept dry and safe. The ski room opens into the garage with space to park two cars for complete peace of mind (this is shared with the chalet next door).

The ground floor is a true show-stopper. Here you will step into the blissful private spa and entertaining areas. The spa has a beautiful heated pool, luxurious hammam, outdoor hot tub, sauna, and gym with awe-inspiring panoramic views of the surrounding mountains. Adjacent to the spa you can enjoy some fantastic entertainment in your own personal bar area and high-tech dedicated cinema room.

A cosy bedroom is also located on this floor with en-suite facilities and a separate restroom.

Outside you can enjoy refined relaxation areas and take in the immense views of the Verbier mountains from the comfort of your luxury property.





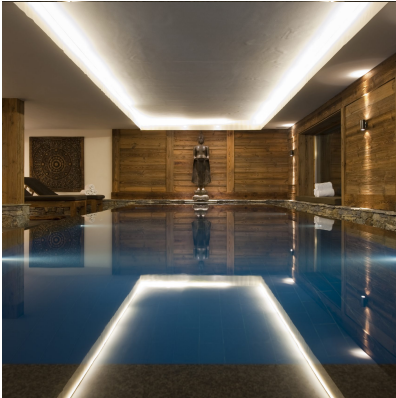


# FACILITIES



## CHALET

A truly astounding chalet, this property spans 950 square metres, sleeping a maximum of 12 guests. Four beautifully-designed floors provide dedicated areas for stimulation and relaxation, each with stunning panoramic views across the mountains.



## RELAXATION

Indulge yourself in Dent Blanche's private indoor spa with a large heated indoor pool, exotic hammam, and sublime sauna. Bathe in the gorgeous infinity pool and blissful outdoor jacuzzi for the ultimate relaxation experience.



## FITNESS

A personal gym of professional standard is located on the ground floor. Here you will find the highest quality of fitness equipment in a private setting with views looking out over the inspiring Val des Bagnes.



## ENTERTAINMENT

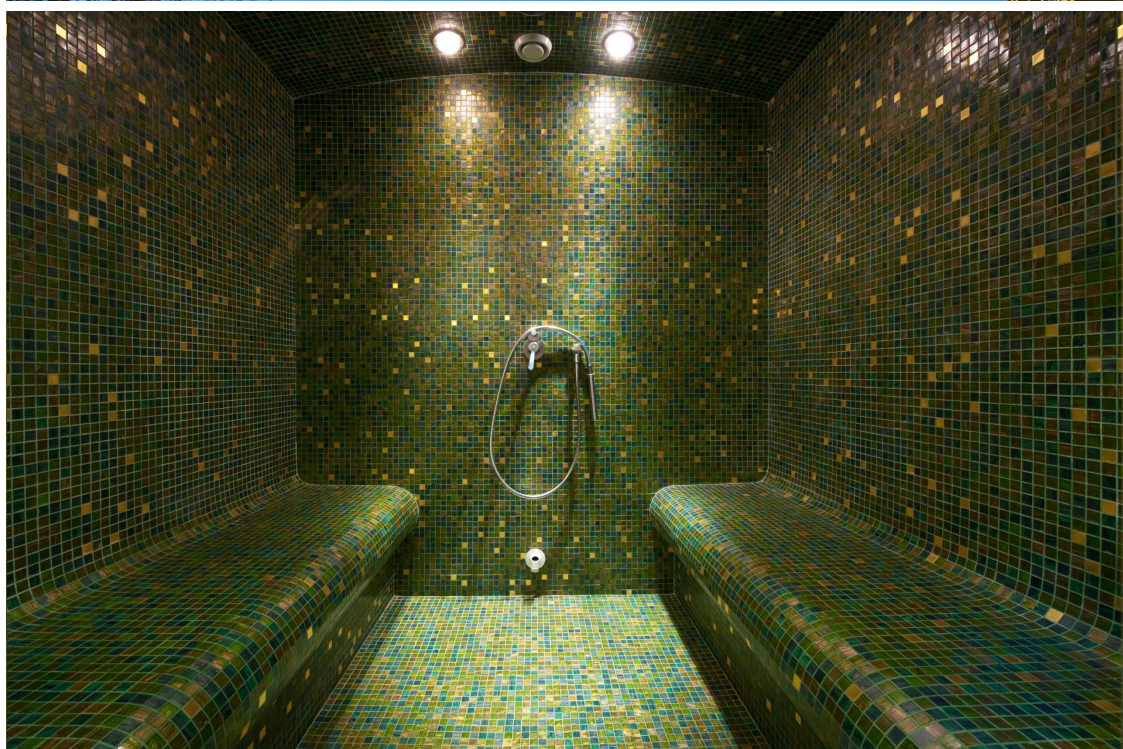


Chalet Dent Blanche will cater to your every entertainment need. Unwind in the plush cinema room or TV zone. Sip a smooth drink from the private bar area or dine on a delicious seven-course meal. Crestron entertainment systems and all-round WiFi broadband will entertain you throughout your stay.

## PARKING

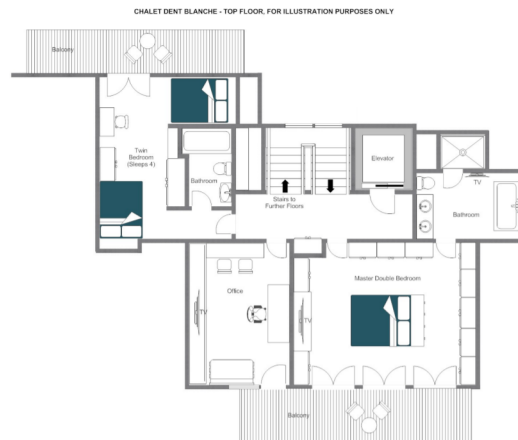


Parking is not a problem in Chalet Dent Blanche. The property has two dedicated indoor car parking spaces for your vehicles, keeping them safe and secure during your holiday.





# LAYOUT



## TOP FLOOR

- Master double bedroom (sleeps 2, en-suite bathroom, private balcony)
- Twin bedroom (sleeps 2, queen-size beds, en-suite bathroom)

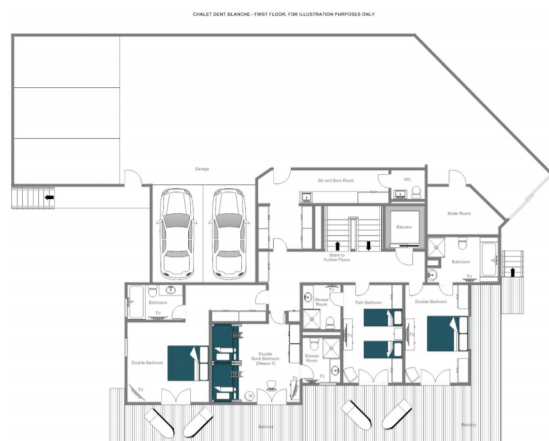
# LAYOUT



## LIVING FLOOR

- Open plan living and dining area
  - TV area
  - Office
  - Hallway
- Guest restroom
- Balcony

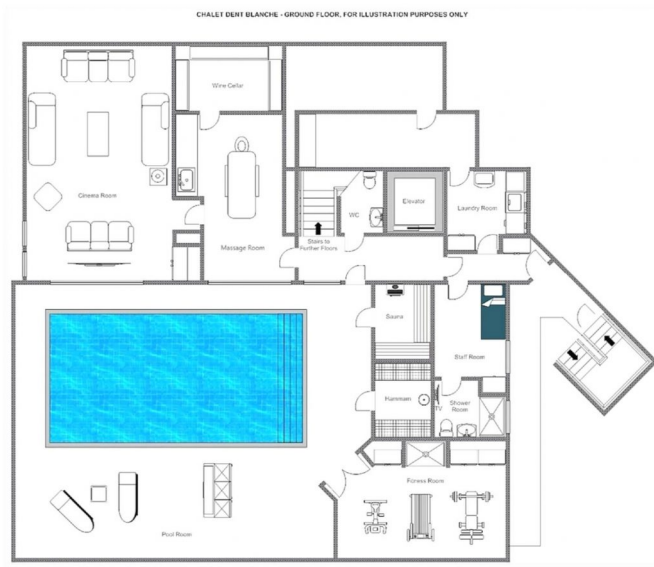
# LAYOUT



## SLEEPING FLOOR

- Double bedroom (sleeps 2, en-suite bathroom)
- Double bedroom (sleeps 2, en-suite bathroom)
- Twin bedroom (sleeps 2, en-suite shower room)
- Quad bunk room (sleeps 2, en-suite shower room)
  - Guest WC
  - Ski and boot room
- Additional restroom
  - Garage area
  - Balcony

# LAYOUT



## GROUND FLOOR

- Spa with pool, sauna, hammam, massage room, outdoor hot tub
  - Shower area
    - Gym
    - Cinema room
- Additional staff bedroom (en-suite shower room)
  - Separate WC





# LOCATION

## PARKING

Indoor parking: 2

## LOCATION

Nestled in a private, but very central position, Dent Blanche offers incredible views and is perfectly located for exploring Verbier from.

## PROXIMITY

Medran Lift Station - 3-minute drive or 7-minute walk

Place Central - 3-minute walk









An aerial photograph of a mountain village, likely Verbier, covered in snow. The houses have dark wooden walls and white roofs. A tall, white church tower stands out on the right side. The scene is framed by out-of-focus evergreen branches in the foreground.

HAUTE MONTAGNE

DENT BLANCHE



VERBIER