

bramble
ski

PART OF
LE COLLECTIONIST

REDEFINING THE LUXURY CHALET EXPERIENCE

alpine
classic

GRAND PRÉ 2

FRANCE

VAL D'ISÈRE

GRAND PRÉ 2

VAL D'ISÈRE | Sleeps 8+2 spa



REDEFINING THE LUXURY CHALET EXPERIENCE

A LUXURY FOUR-BEDROOM SKI-IN, SKI-OUT
APARTMENT with fabulous shared facilities and views.

DESCRIPTION



REDEFINING THE LUXURY CHALET EXPERIENCE

The Grand Pré residence occupies an incredible location overlooking the La Face piste, and offers luxurious Val d'Isère living, outstanding views, and superb wellness facilities.

Grand Pré 2 is one of four stunning luxury apartments in the residence. Sleeping up to 8+2 people in four bedrooms, this contemporary home is full of character and is a wonderful retreat for a ski-loving family or a group of friends.

Guests can ski directly back to the property, where skis and boots can be safely stored in the apartment's dedicated ski room located on the ground floor. Grand Pré 2 is entered on the second floor of the building where a warm welcome awaits. Designed with impeccable attention to detail, the apartment exudes a love of the mountains and in particular ski-life through its use of rich, textured woods and stylish, playful décor.

The open plan kitchen, living and dining area occupy most of the floor space on this level. The space is sophisticated, yet comfortable and cosy, with a strong ski chalet ambience. A wood-burning fireplace is the focal point set in the far corner of the living room with a smart TV above it and a large, comfy sofa with cosy faux fur cushions and two poufs ensure there is a spot for everyone to put their feet up after a hard day on the slopes. From this vantage point, guests can drink in the dramatic mountain views through large windows and two sets of double glass doors which lead onto the balcony. In the warmer spring months, this will be the perfect place to enjoy the dying embers of the day.

Behind the living area is the well-equipped kitchen, which is sleek and functional with plenty of counter space for food preparation and ample storage to avoid clutter. There is a raised breakfast bar with four stylish bar chairs, perfect for breakfast on the go and kids' suppers. The dining area adjoins the living room and here, a large, contemporary wooden table seats up to ten people. Ambient lighting over the table and kitchen bar ensures an intimate atmosphere, while wood, leather and iron throughout create a timeless, traditional-feeling space.

Taking the stairs down to the first floor level, guests will find themselves in the sleeping quarters. Four beautiful bedrooms sleep up to ten guests in comfort. The designer has maintained a mostly neutral palette in both the bathrooms and the bedrooms, adding layers with rich fabrics and textiles. Each room is named according to a local animal, and each animal features in a striking wrought-iron sculpture that is displayed on the wall behind each bed and created by a leading metal sculpture. Various skiing collectables and objects des arts add splashes of fun and colour.

The first bedroom is a double bedroom with en-suite shower room. It has glass doors leading out to the terrace which allow warming natural light to flood in. The second bedroom is another double bedroom with en-suite shower and a private toilet. The master double bedroom is the most spacious and features a desk and chair as well as a large bathroom with a separate shower. It also has terrace access through glass doors that warm the room with sunlight by day. All these rooms have mounted TVs. The fourth bedroom is a quad bunk room, sleeping up to four people in adult-sized beds. The hand-crafted bunk beds are exquisitely finished. This bedroom has an en-suite shower room and guests sleeping here have a dedicated WC located next to the room.

The apartment has its own laundry room with a washer and a dryer. Guests also have access to a ski room with private ski lockers.

Guests staying at Grand Pré 2 have shared access to the spa area on the building's first floor presided over by a heated swimming pool with endless current and submerged jet spa. A sauna completes this tranquil space, perfect for indulging tired, ski-weary muscles.

An expansive parking garage, with two dedicated parking places with electric car charging ports, occupies the lowest level of the building.

FACILITIES



INTERIOR

- Sleeps 8 + 2
- 130 Square metres
- 4 Bedrooms
- 9 Individual beds
- 4 Bathrooms
- 1 Additional WCs
- 10 Dining table seats
- 6 Living area seats

APPLIANCES

- Bluetooth speaker
- Smart TV
- Wifi

WELLNESS AND RELAXATION

- Balconies
- Shared access to pool
- Shared access to sauna

ADDITIONAL

- Cot/high chair available
- Family-friendly chalets
- Private laundry facilities
- Private ski locker
- Ski-in & Ski-out
- Wood burning fireplace
- Indoor Parking: 2



LAYOUT



REDEFINING THE LUXURY CHALET EXPERIENCE

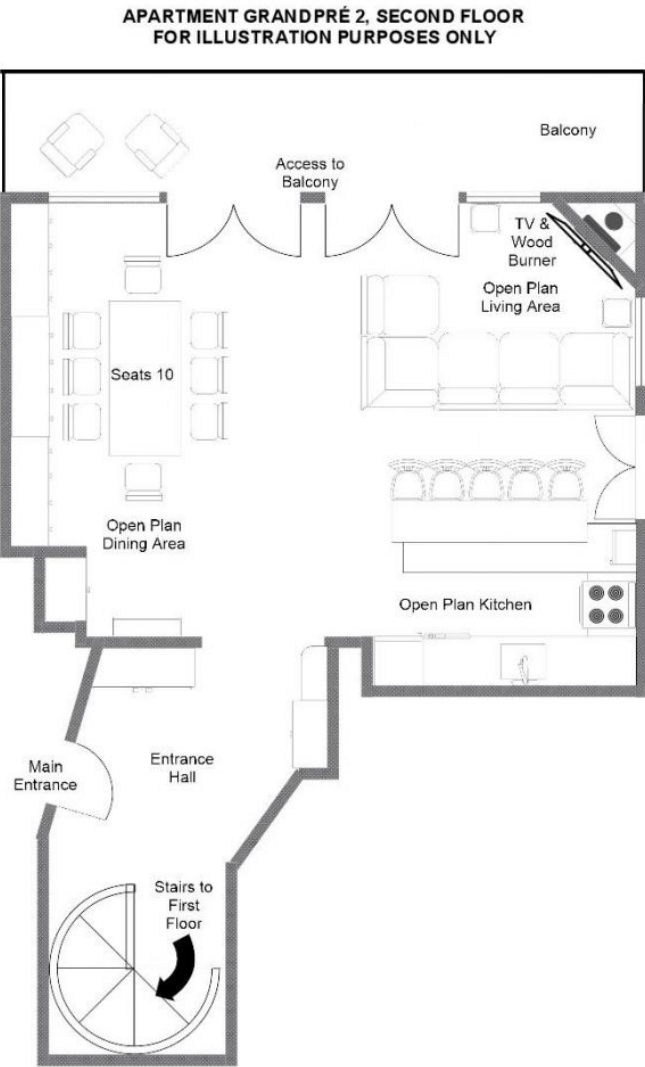
SECOND FLOOR

- Open plan living, dining and kitchen

FIRST FLOOR

- 1 Twin/double bedroom (TV & en-suite shower room with separate shared WC)
- 1 Twin/double bedroom (TV & en-suite shower room with private WC)
- 1 Master double bedroom (Smart TV & en-suite bathroom with separate shower and private WC, desk)
- 1 Quad bunk room (Smart TV & en-suite shower room with separate shared WC)







LOCATION



REDEFINING THE LUXURY CHALET EXPERIENCE

PROXIMITY

Solaise ski lift – 10-minute walk

Village centre – 5-minute drive

GOOGLE CO-ORDINATES

45.441432, 6.976897



REDEFINING THE LUXURY CHALET EXPERIENCE





bramble
ski

PART OF
LE COLLECTIONIST