

bramble
ski

PART OF
LE COLLECTIONIST

REDEFINING THE LUXURY CHALET EXPERIENCE

alpine
classic

HAUS LEYTRON

SWITZERLAND

ZERMATT

HAUS LEYTRON

ZERMATT | Sleeps 8+2



REDEFINING THE LUXURY CHALET EXPERIENCE

AN EXCEPTIONAL DUPLEX APARTMENT located in the
exclusive "Petit Village" area of Zermatt

DESCRIPTION



REDEFINING THE LUXURY CHALET EXPERIENCE

Offering beautiful views across the village, and of the Matterhorn, this stunning apartment has recently undergone refurbishment, making it the perfect family home, perfectly positioned in one of Zermatt's most prestigious neighbourhoods.

Accessed via a 24-hour funicular or by a three-minute electric taxi from the village, advanced skiers can also ski back to within a short walk of the apartment when conditions permit.

Haus Leytron has been beautifully decorated, delicately balancing a sleek, modern palette with traditional alpine luxury.

The ground floor offers a beautiful and spacious open plan living area with a double height sitting room, home to a gorgeous piano. Floor to ceiling windows that look over the picturesque village of Zermatt with the dramatic Matterhorn as a backdrop, bathe the room in natural light and a large stone fireplace keeps it warm and cosy. Furnished with large sofas in sumptuous textiles, the living room is a wonderful space for relaxing in day or night. There is a fully-equipped kitchen with dining area that leads out on a terrace offering stunning views of the surrounding mountains.

The ground floor is also home to the playfully-styled children's bunk room with four bunk beds and a separate shower room and WC.

A beautiful wooden staircase leads you to the top floor which overlooks the sitting room and where the three additional bedrooms are. The hallway provides a desk space and incredible views through the floor to ceiling windows. The master bedroom has a large en-suite bathroom with a separate shower. It is a spacious room, decorated with rich textiles and has a TV and a beautiful private balcony.

There are two further bedrooms with double/twin beds and one with en-suite shower room and one with en-suite bathroom. These rooms also have large floor to ceiling windows and balconies providing stunning views.

Guests can also enjoy the indoor spa area which is separate to the apartment, but in the same building. Private to the apartment, there is an indoor hot tub for soaking tired legs and a sauna.

FACILITIES



REDEFINING THE LUXURY CHALET EXPERIENCE

INTERIOR

- Sleeps 8 + 2
- 270 Square metres
- 4 Bedrooms
- 7 Individual beds
- 4 Bathrooms
- 10 Dining table seats
- 10 Living area seats

APPLIANCES

- Cable TV
- Wifi

WELLNESS AND RELAXATION

- Indoor hot tub
- Sauna
- Spa

ADDITIONAL

- Corporate chalets
- Cot/high chair available
- Family-friendly chalets
- Private ski locker
- Shared laundry facilities
- Wood burning fireplace



LAYOUT



REDEFINING THE LUXURY CHALET EXPERIENCE

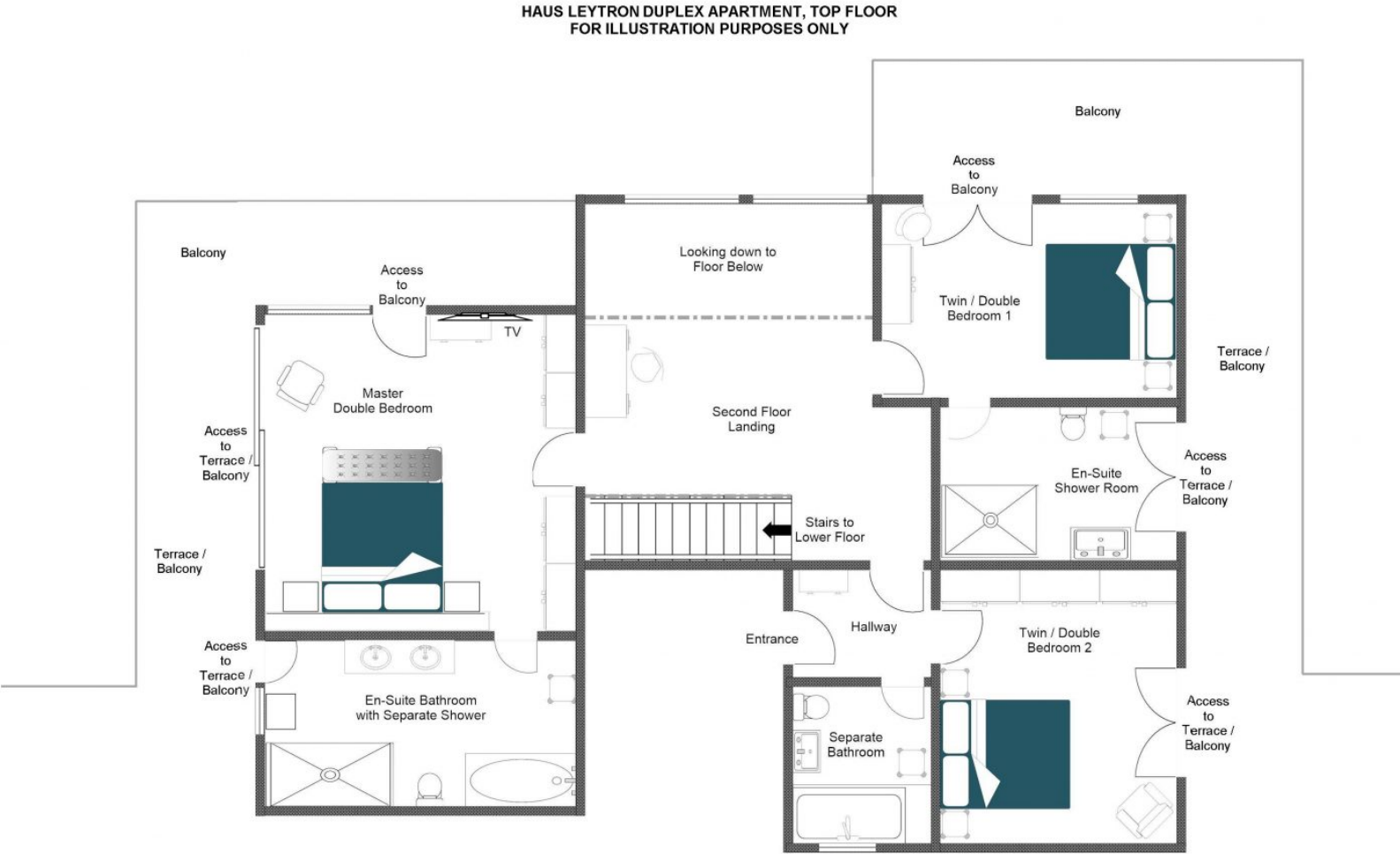
TOP FLOOR

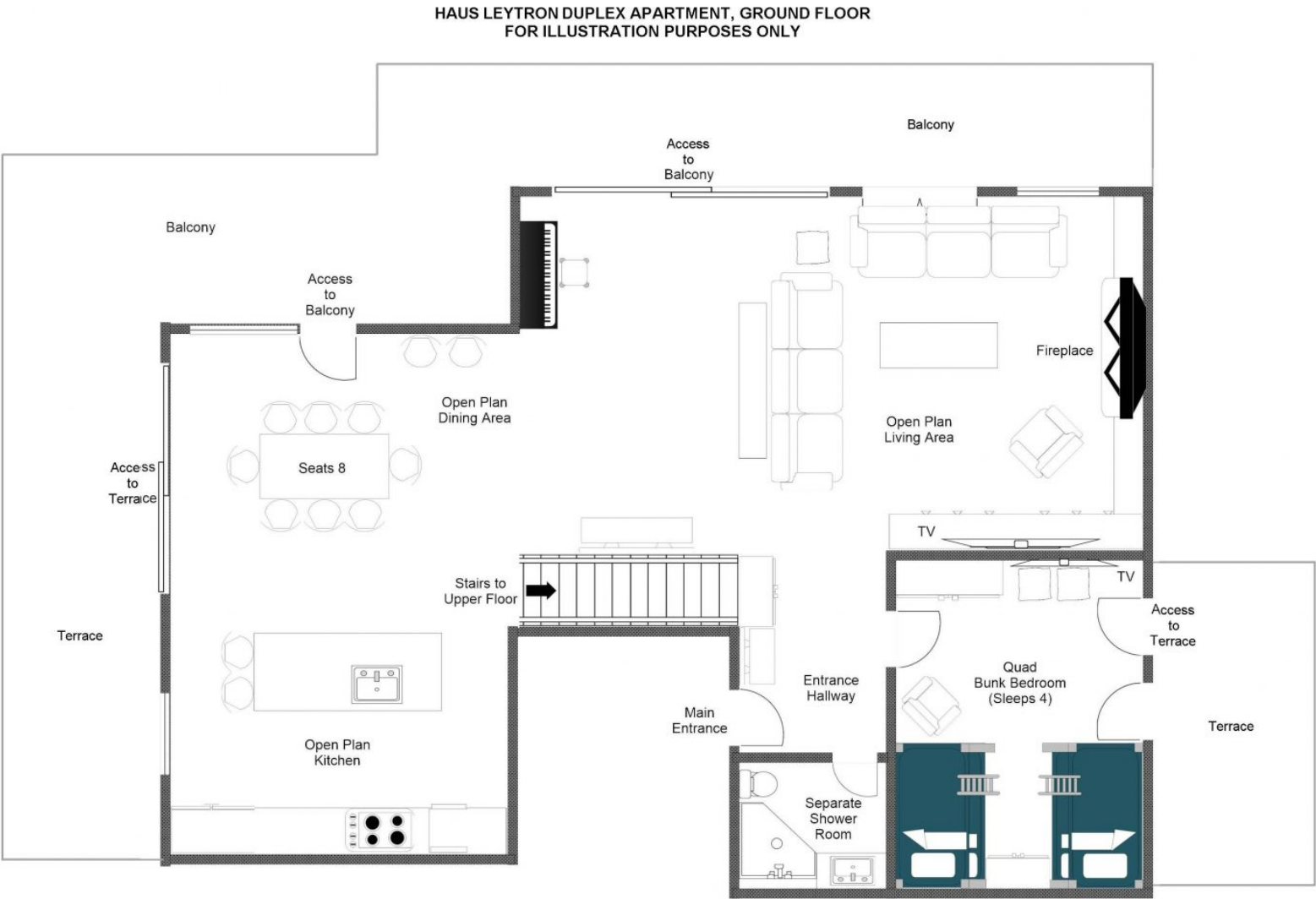
- 1 Master double bedroom (en-suite bathroom with separate shower)
- 1 twin/double bedroom (en-suite shower room, shared balcony access)
- 1 twin/double bedroom (en-suite bathroom, shared balcony)

GROUND FLOOR

- Open plan kitchen, living and dining area
- Quad bunk room
- Separate shower room









LOCATION



Accessed via funicular or by a 3-minute electric taxi from the village.

PROXIMITY

Sunnega lift station: 12-minute walk or 3-minute taxi ride, or accessed via funicular

Zermatt village: 15-minute walk or 3-minute taxi ride, or accessed via funicular

GOOGLE CO-ORDINATES

46.028153, 7.755878







bramble
ski

PART OF
LE COLLECTIONIST

