

IVOUETTE 011

SWITZERLAND

VERBIER

IVOUETTE 011

VERBIER | Sleeps 6+1



CENTRALLY LOCATED JUST FIVE MINUTES FROM
VERBIERS MAIN LIFT STATION YET LOCATED IN A
PEACEFUL ENCLAVE AWAY FROM THE NOISE, THIS
BEAUTIFUL APARTMENT IS SPACIOUS AND
HOMELY.

DESCRIPTION



Wonderfully positioned just a 5-minute walk from the main Médran lift station, and equally as close to Place Centrale, yet peacefully set away from busy roads, this homely Verbier apartment is spacious and social in design.

You enter the apartment into a hallway which is panelled with warm wood on the ceiling, creating the feel of an alpine chalet.

To your right is the spacious master bedroom, which is full of lovely natural light in the afternoon thanks to french doors leading on to the patio. The large bed is bordered by wooden built in wardrobes on both sides, providing impressive storage capacity. It has an en-suite bathroom featuring a jacuzzi bath and shower combo, his and hers sinks and heated towel rails.

The second double bedroom to the left of the hallway contains a large bed, two built-in wardrobes, and an en-suite shower room. Gentle spotlights give the room a cosy ambiance.

Continuing along the hallway, you enter the open plan living and dining area and kitchen. To your immediate left is a handy concealed laundry room and storage space.

The living area features a Bose speaker, a wall-mounted flat screen with Apple TV and a welcoming stone & aged wood fireplace. This is the focal point of the room, separating the living and dining areas, and with glass on three sides so that the fire can be enjoyed from all angles.

An invitingly large three seater L-shaped sofa, and a separate two seater sofa, face out into the communal space. Large double french doors lead to the private patio, and flood the space with winter sunlight. These are repeated on the opposite side of the fireplace, benefitting the dining area too, which comfortably seats six.

The well-equipped kitchen offers lots of storage and even a wine fridge, and a half wall separates it from the dining area to create a perfect space for entertaining.

Just off of the living area is the third double bedroom with single bunk bed, sleeping either 2 adults and a child or 3 children. It has a built-in triple wardrobe, and an en-suite bathroom with bath.

The private patio contains plenty of outdoor seating and a shared lawn with one neighbouring property. The building also has a shared ski room, with boot warmers and a clothes dryer to ensure everything is dry and warm for the next morning on the slopes. In the ski room there is a spacious private locker dedicated to the property for the storage of your skis. There is two indoor parking space for the property.

FACILITIES



INTERIOR

- Sleeps 6 + 1
- 120 Square metres
- 3 Bedrooms
- 4 Individual beds
- 3 Bathrooms
- 8 Dining table seats
- 6 Living area seats

APPLIANCES

- Bluetooth speaker
- Wifi

WELLNESS AND RELAXATION

- Terrace

ADDITIONAL

- Cot/high chair available
- Family-friendly chalets
- Private laundry facilities
- Private ski locker
- Shared ski locker
- Wood burning fireplace
- Indoor Parking: 2



LAYOUT



GROUND FLOOR

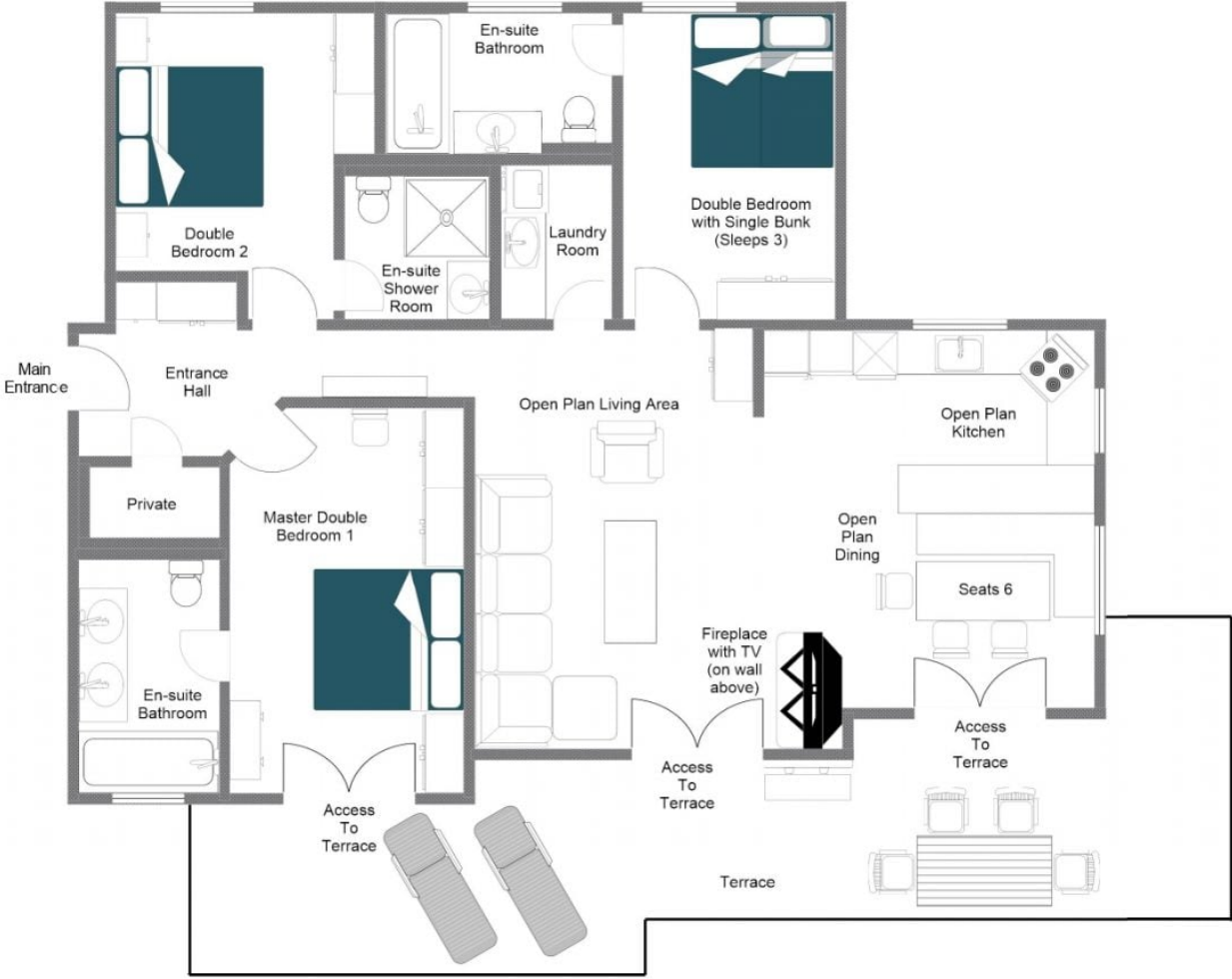
- Open kitchen, living and dining area
- 1 Master double bedroom (sleeps 2, en-suite bathroom and terrace access)
- 1 Double bedroom (en-suite shower room)
- 1 Double bedroom with a single bunk (en-suite bathroom)
- Laundry room







IVOUETTE APARTMENT 011, GROUND FLOOR APARTMENT
FOR ILLUSTRATION PURPOSES ONLY



Peacefully set back from main roads but extremely centrally located in Verbier.

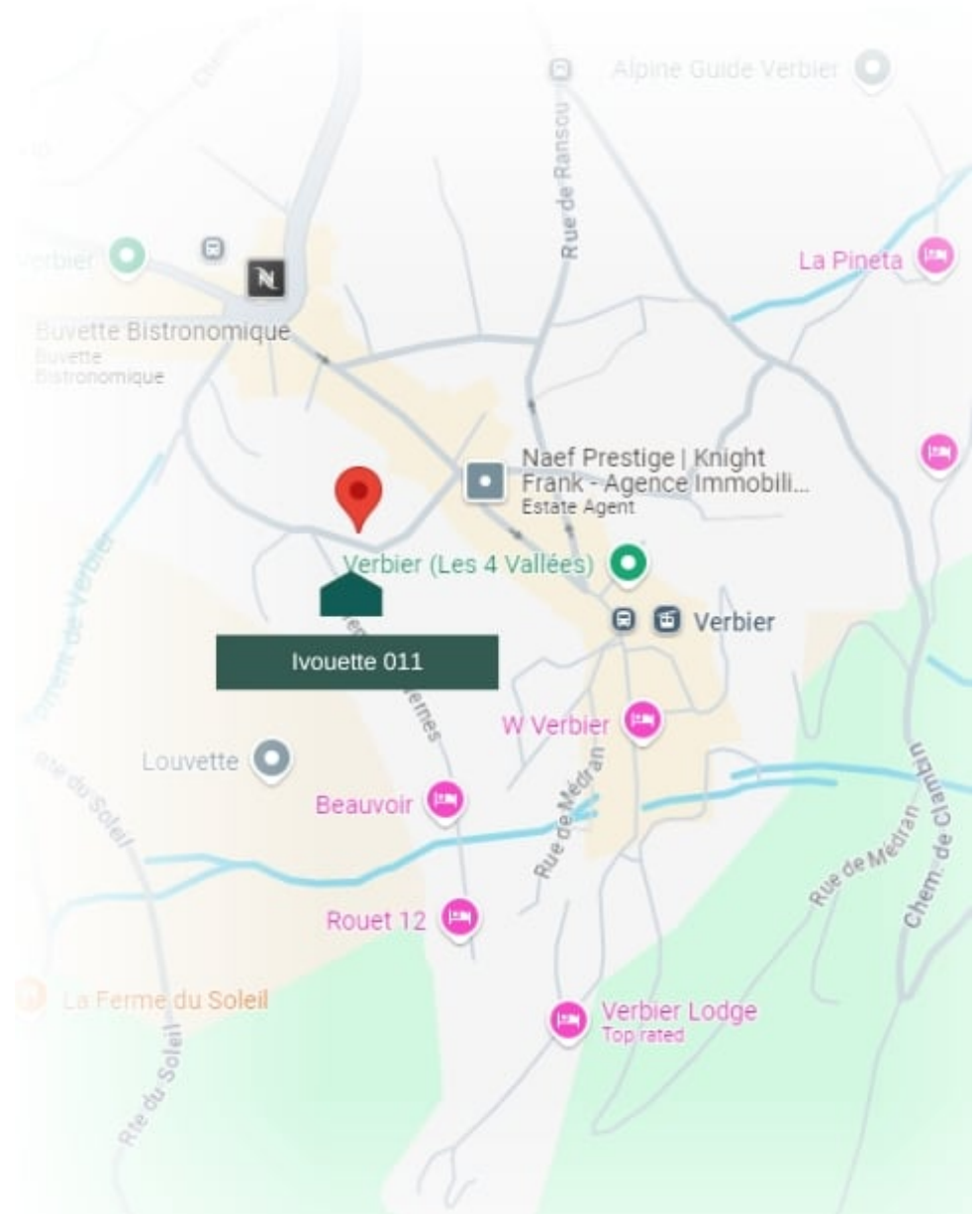
PROXIMITY

Médran - 3-minute walk Savoleyres - 4-minute drive

Place Centrale - 2-minute walk

GOOGLE CO-ORDINATES

46.094367, 7.230020





bramble
ski
BY
LE COLLECTIONIST