

NO. 5 PENTHOUSE

SWITZERLAND

VERBIER

NO. 5 PENTHOUSE

VERBIER | Sleeps 8 [spa](#)



REDEFINING THE LUXURY CHALET EXPERIENCE

THIS CHARMING PENTHOUSE APARTMENT oozes
elegance and delivers on location

DESCRIPTION



REDEFINING THE LUXURY CHALET EXPERIENCE

A MINIMUM TWO WEEK BOOKING IS REQUIRED OVER THE NEW YEAR PERIOD

A very well-appointed four-bedroom penthouse apartment, conveniently located on the Route de Médran, within striking distance of the main Médran lift station in Verbier.

The stunning No.5 complex of apartments has been built on the site of the old Garbos hotel. Completed in 2012, the penthouse has been finished to the highest standard and has access to the shared spa facility featuring a hammam, a sauna, and a gym located on the lower ground floor.

The Verbier apartment is located on the third floor of the building, where its elevated position affords it stunning views, best enjoyed from the outdoor hot tub.

Access the apartment by lift and enter into the impressive open plan living and dining area which is perfect for entertaining. This is overlooked by the well-equipped open plan kitchen. The living area has a real fire and sliding doors which lead onto the extensive balcony.

The master en-suite bedroom is accessed from the living area. This is a wonderful room, complete with a roll-top bath, spectacular views, and a fireplace.

The apartment has a further two twin/double bedrooms and a children's bunk room. One of these rooms has an en-suite shower room while the other two bedrooms share a shower room. The children's room has a mezzanine floor where a television area is set out. In addition, the apartment has a guest toilet and private laundry facilities.

Clients have the use of a ski locker in the shared ski room.

One underground parking space is available at the property.

The apartment is sold on a catered, self-catered, or accommodation-only basis.

FACILITIES



REDEFINING THE LUXURY CHALET EXPERIENCE

INTERIOR

- Sleeps 8
- 200 Square metres
- 4 Bedrooms
- 6 Individual beds
- 3 Bathrooms
- 1 Additional WCs
- 8 Dining table seats
- 6 Living area seats

APPLIANCES

- Hi-Fi/CD player/MP3 player
- Wifi

WELLNESS AND RELAXATION

- Outdoor hot tub
- Shared access to gym
- Shared access to Hammam
- Shared access to sauna
- Spa

ADDITIONAL

- Corporate chalets
- Cot/high chair available
- Family-friendly chalets
- Private laundry facilities
- Shared ski locker
- Wood burning fireplace
- Indoor Parking: 1



LAYOUT



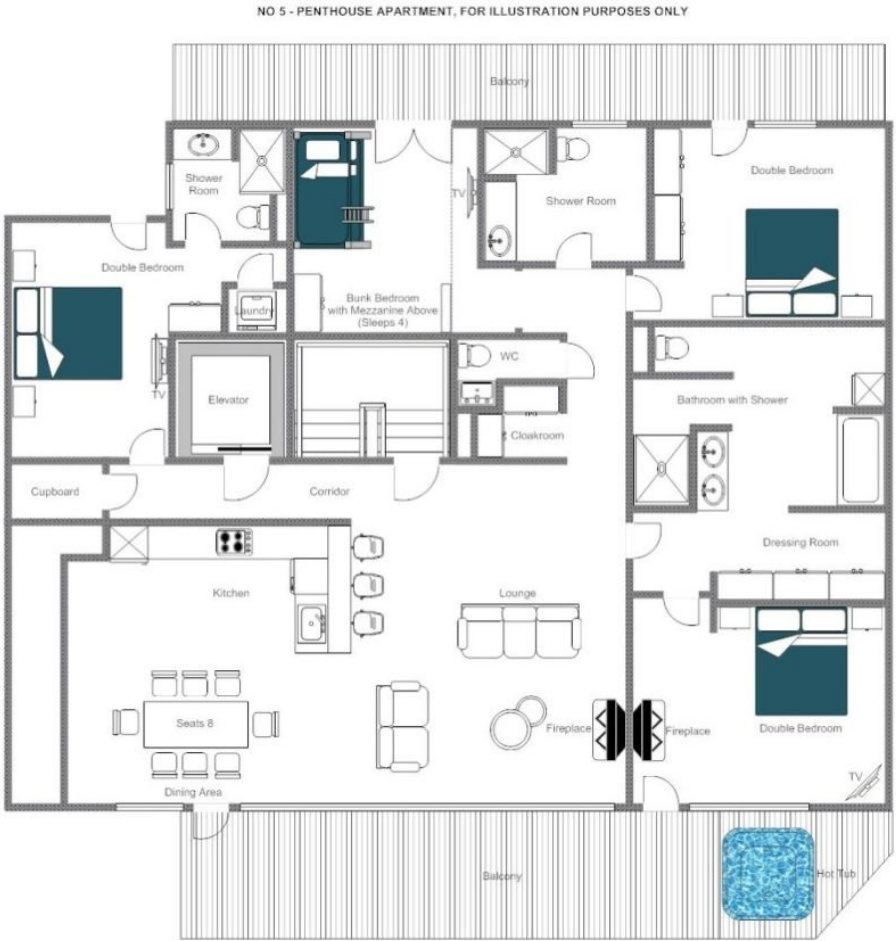
REDEFINING THE LUXURY CHALET EXPERIENCE

TOP FLOOR

- Set out over one floor
- Open plan dining and living area
- Open plan kitchen
- 1 master double bedroom (en-suite bathroom)
- 1 twin/double bedroom (en-suite shower room)
- 1 twin/double bedroom (shared shower room)
- 1 children's bunk room (shared shower room)
- Separate shower room
- Additional guest WC







LOCATION



REDEFINING THE LUXURY CHALET EXPERIENCE



Centrally located, a short walk from Médran and from the centre of the village

PROXIMITY

Médran - 2-minute walk

Place Centrale - 2-minute walk



An aerial photograph of a dense mountain village in winter. The houses have snow-covered roofs and are interspersed with evergreen trees. A tall, white church tower stands out on the right side. The foreground is blurred with snow-covered branches.

bramble
ski
BY
LE COLLECTIONIST