

THE CALIMA ESTATE

VERBIER

THE CALIMA ESTATE

— ◆ —
VERBIER



◆ Verbier, Switzerland
◆ Dedicated cinema room

◆ Outdoor hot tub
◆ Balconies

◆ Sleeps 16
◆ Indoor hot tub

◆ Wellness Spa
◆ Indoor pool



UNRIVALLED CRAFTSMANSHIP AND OUTSTANDING SPA FACILITIES AND VIEWS.



Comprising two of Verbier's most impressive chalets, with carefully considered luxury design and the private spa of dreams, complete with panoramic views



THE CALIMA ESTATE IS AN INCREDIBLE ALPINE RETREAT. COMBINING TWO LUXURY CHALETs - CALIMA AND SIROCCO - IT OCCUPIES AN IMPRESSIVE POSITION IN THE DREAMY HEIGHTS OF VERBIER.



This impressive residence sleeps 16 people in eight deluxe en-suite bedrooms, all of which are individually designed with a calm and tranquil atmosphere. Situated in one Verbier's most exclusive locations, guests can experience unparalleled views of the village below and the breath-taking beauty of the mountains from every angle. Uniquely skilled craftsmen have worked with traditional materials, which when combined with the artistic vision of a leading interior designer, culminate in an interior that is the epitome of luxury.

The two properties are connected by an internal walkway - and can also be accessed externally - allowing guests to easily move between the chalets. Both properties have elegant interiors and every detail has been carefully considered and delivered. The views from their open-plan living and dining areas are outstanding. They both open out onto large balconies where you can bask in the mountain air with your morning coffee. With open fireplaces and stylish furnishings and fixtures, the entertainment areas of both properties are the perfect settings for unforgettable evenings shared with family and friends.

The dining table in Sirocco can seat up to 20 guests, allowing you to enjoy elegant dinners together. Calima boasts a state-of-the-art cinema room with large comfortable seating and sensitive lighting, the ideal spot for movie nights with the family.

The real wow factor of this remarkable estate is delivered by the wellness facilities, and guests have the option of two of the finest private spas in Verbier. There are two indoor swimming pools, two indoor hot tubs, a hammam and a sauna. The views from the pool in Calima are outstanding, giving the impression that you are swimming right up to the mountains beyond. Moving on to the large south facing terrace, you will find the beautiful outdoor hot tub where you can soak after action-packed ski days.

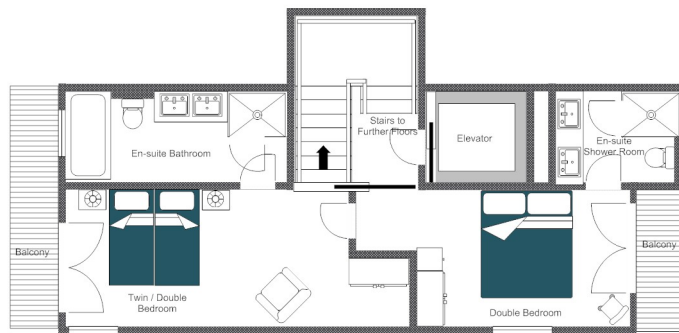
Every floor of this immense estate offers an experience guaranteed to keep you entertained, whether it is a relaxing spa experience, cosy family movie night, elegant dinner parties or taking in the fantastic mountain views.

The property is available on a self-catered or catered basis. When taken on a catered basis, guests will be looked after by a team of highly trained professionals, each selected for excellence in their field, attention to detail, and discretion.



LAYOUT

CHALET SIROCCO, TOP FLOOR (SLEEPING FLOOR) - FOR ILLUSTRATION PURPOSES ONLY

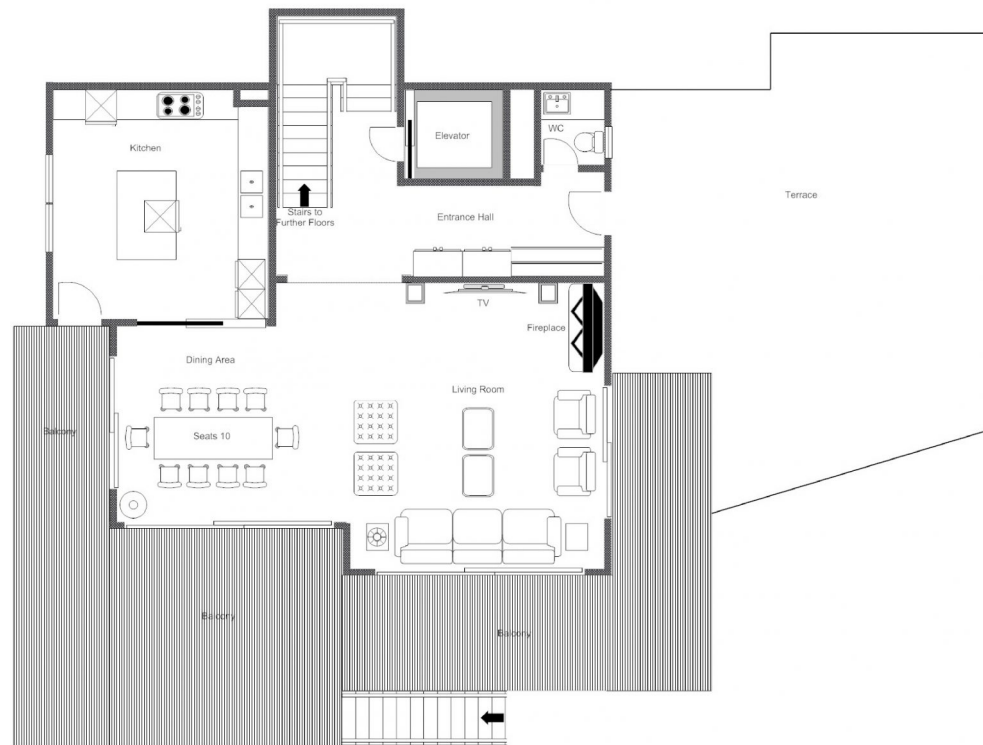


SLEEPING FLOOR (SIROCCO, TOP FLOOR)

- Twin/double bedroom (sleeps 2, en-suite bathroom, private balcony)
- Double bedroom (160cm bed, en-suite shower room, private balcony)

LAYOUT

CHALET SIROCCO, SECOND FLOOR (LIVING FLOOR) - FOR ILLUSTRATION PURPOSES ONLY

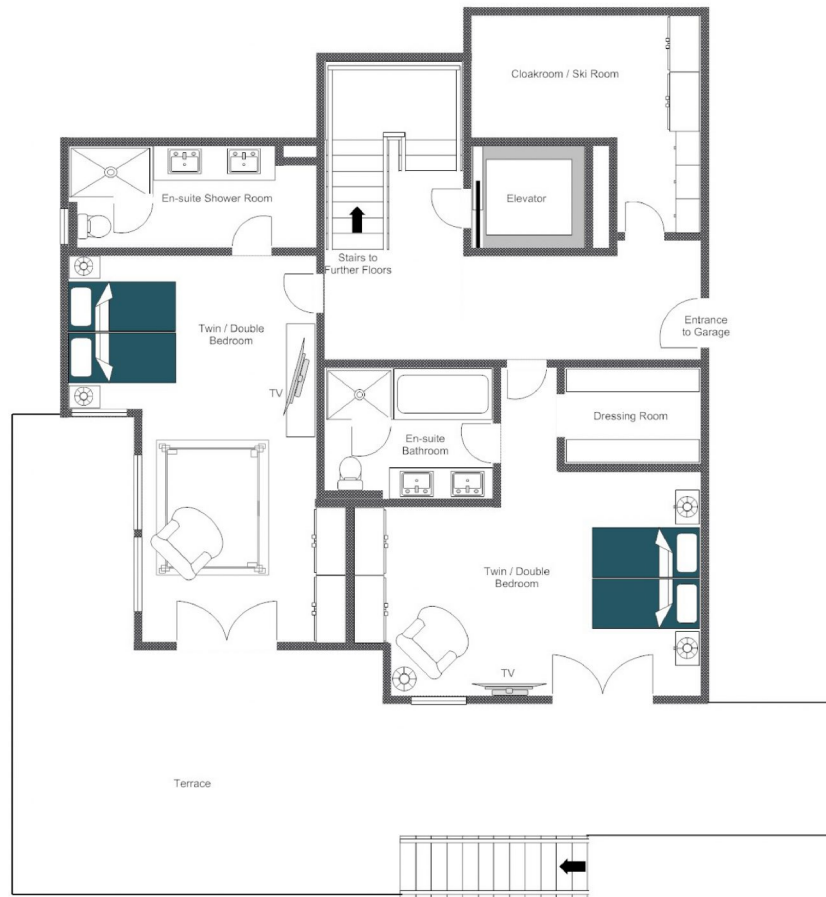


LIVING FLOOR (SIROCCO, 2ND FLOOR)

- Open plan living and dining area
 - Kitchen
 - Guest WC

LAYOUT

CHALET SIROCCO, FIRST FLOOR (SLEEPING FLOOR) - FOR ILLUSTRATION PURPOSES ONLY

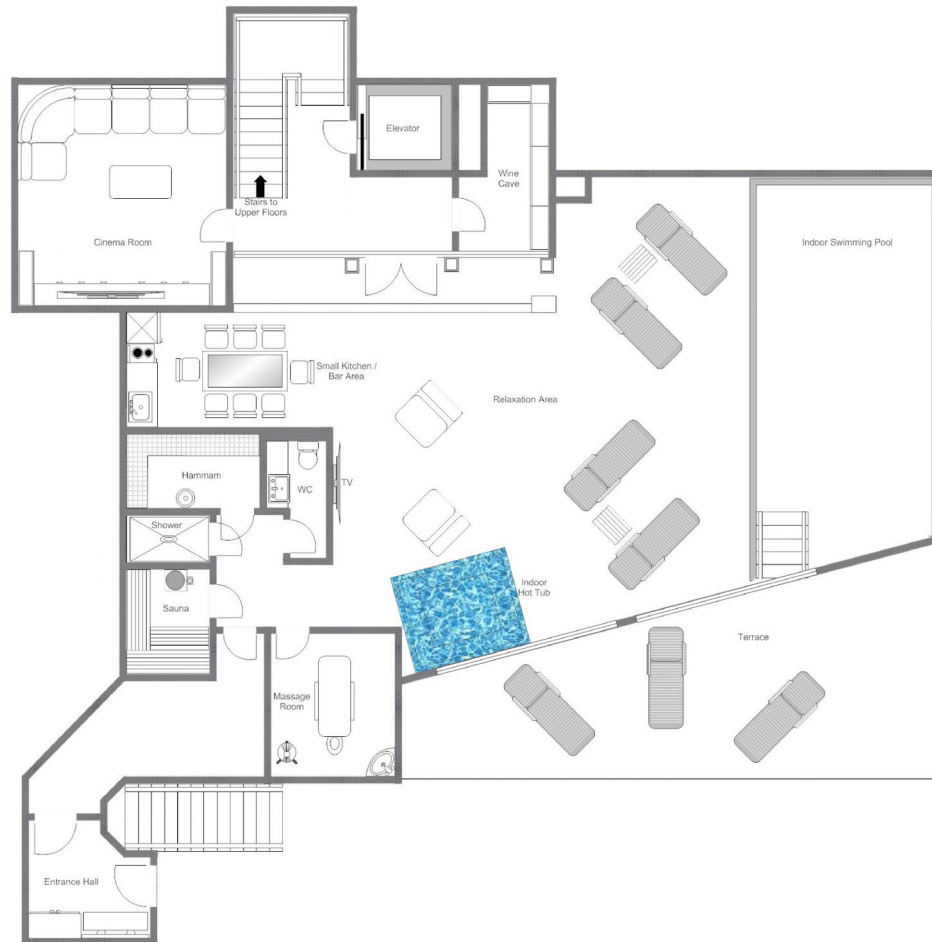


SLEEPING FLOOR (SIROCCO, 1ST FLOOR)

- Twin/double bedroom (sleeps 2, en-suite shower room)
- Twin/double bedroom (sleeps 2, en-suite bathroom with separate shower)
 - Ski room
 - Garage entrance

LAYOUT

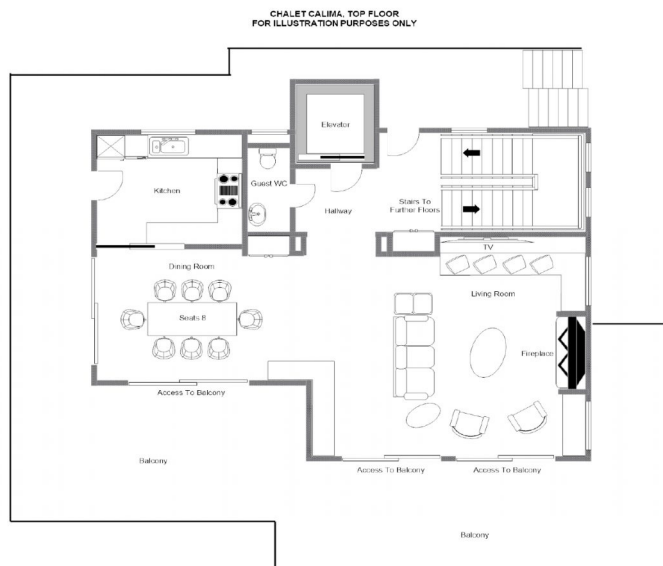
CHALET SIROCCO, GROUND FLOOR (ENTERTAINMENT & SPA FLOOR) - FOR ILLUSTRATION PURPOSES ONLY



ENTERTAINMENT AND SPA FLOOR (SIROCCO, GROUND FLOOR)

- Cinema room
- Indoor swimming pool
 - Indoor hot tub
 - Sauna
 - Hammam
 - Shower
- Massage room
- Relaxation area
 - Wine cave
- Small kitchen/bar area

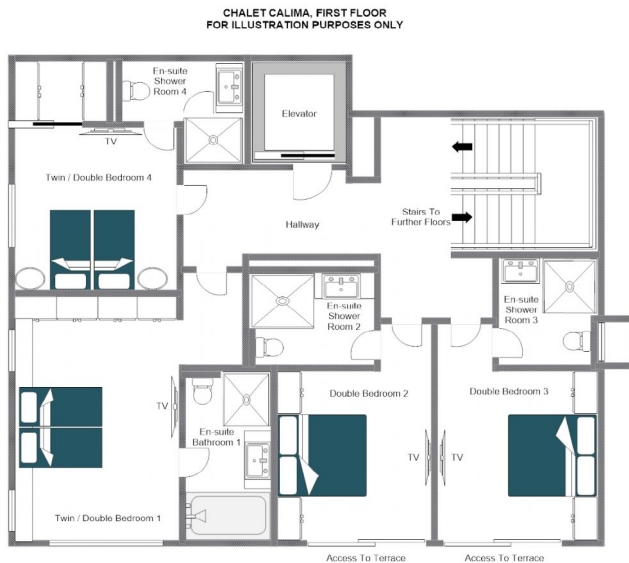
LAYOUT



LIVING FLOOR (CALIMA, TOP FLOOR)

- Open plan living and dining room
 - Kitchen
 - Guest WC

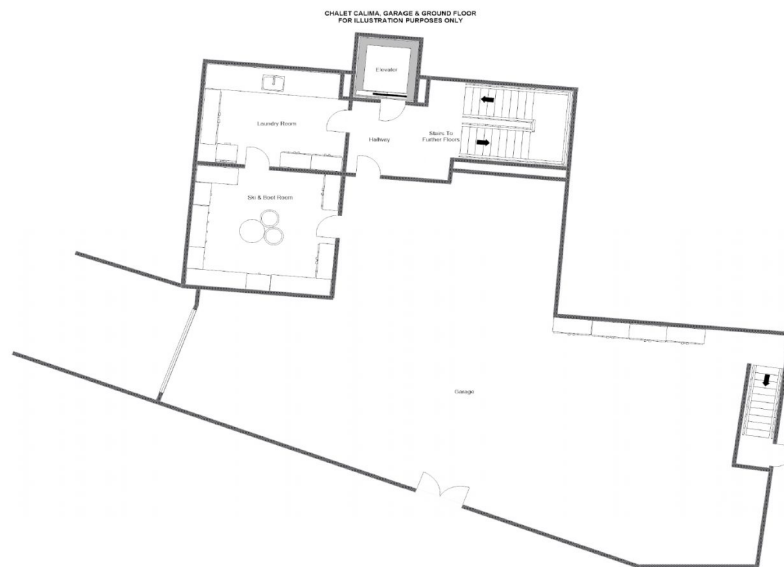
LAYOUT



SLEEPING FLOOR (CALIMA, SECOND FLOOR)

- 1 twin/double bedroom (en-suite bathroom, terrace access)
- 1 double bedroom (en-suite shower room, terrace access)
- 1 double bedroom (en-suite shower room, terrace access)
- 1 twin/double bedroom (en-suite shower room)

LAYOUT



ENTERTAINMENT FLOOR (CALIMA, FIRST FLOOR)

- Garage
- Cinema room
- Ski room

LAYOUT



ENTERTAINMENT FLOOR (CALIMA, GROUND FLOOR)

- Indoor swimming pool
 - Indoor hot tub
- Shower room with WC
 - Outdoor hot tub



FACILITIES



WELLNESS

An unrivaled opportunity to rejuvenate in two of Verbier's most incredible private spas. Sink into the outdoor hot tub and watch the sunset, do your morning laps in the pool with sweeping mountain views or unwind in one of the saunas or hammams post skiing.



ENTERTAINMENT

With two home cinemas to choose from, children can have space to play in Sirocco's TV room with their favourite film on in the background, while adults sink into Calima's plush blue velvet sofas to indulge in an after-dinner movie marathon.



LIVING & DESIGN

Each element has been impeccably designed to showcase craftsmanship, stunning interiors & jaw-dropping views afforded by the chalet's exclusive vantage point. From small touches like sensitive lighting to statement pieces like an all-marble chimney - this home takes Alpine living to new heights.



LOCATION

PARKING

Indoor parking: 3

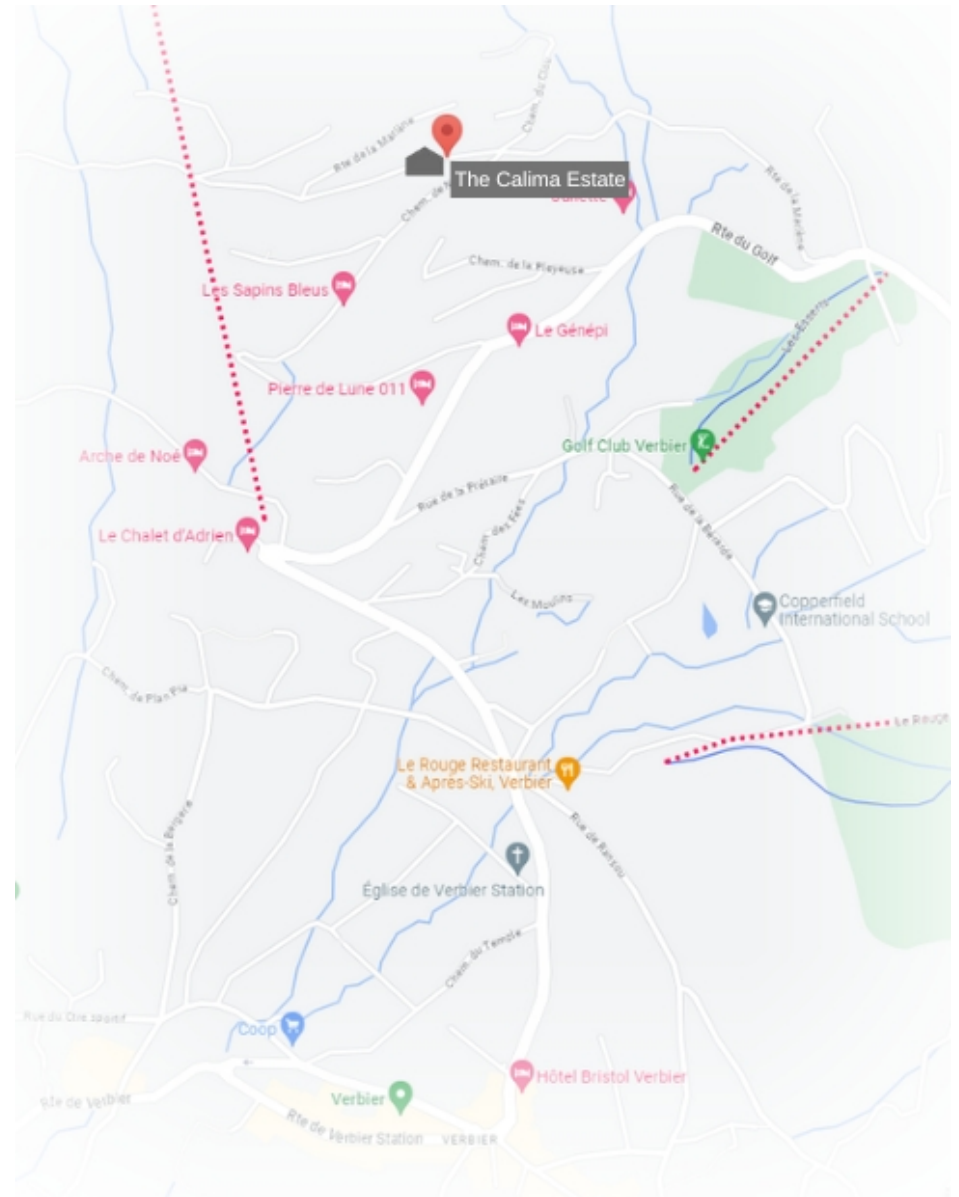
LOCATION

Located in the heights of Verbier, near the Sonalon restaurant

PROXIMITY

Médran - 7-minute drive

Savoleyres - 3-minute drive





THE CALIMA ESTATE



VERBIER