

bramble
ski

PART OF
LE COLLECTIONIST

REDEFINING THE LUXURY CHALET EXPERIENCE

alpine
classic

VILLA VILLEKULLA

A U S T R I A

ST ANTON

VILLA VILLEKULLA

ST ANTON | Sleeps 12 spa



REDEFINING THE LUXURY CHALET EXPERIENCE

A STUNNING SKI-IN CHALET that sleeps twelve and
ticks all the boxes

DESCRIPTION



REDEFINING THE LUXURY CHALET EXPERIENCE

An outstanding new addition to our St. Anton portfolio, the pristine Villa Villekulla is rival to some of the most luxurious chalets in the Austrian ski resort. With the capacity to sleep up to 12 people in six luxurious bedrooms and boasting mountain views, this contemporary ski-in chalet will be the ideal solution for family groups or a group of friends looking to optimise on skiing and relaxation.

The main piste leading into St. Anton, dotted with some of the resort's most loved restaurants and bars, is only a few minutes from the chalet, meaning advanced skiers can ski in to within 150 metres of the chalet and to ski out, it is only a short stroll to the piste.

The top floor of the chalet is dedicated to the modern living space. An open living, dining and kitchen area provides a wonderful space for groups to gather. Rich textured fabrics and soothing neutral tones create a space that is both simple and elegant. During the day, the room is warmed with natural light spilling through floor to ceiling windows and by night, a contemporary open wood fireplace adds the cosy factor. The large dining table seats up to 12 people. From the sofa, drink in fantastic views through French windows that lead out to a south-facing balcony. On the other side of the room, doors open onto an extensive terrace which receives the morning sunshine. Luxurious outdoor furniture make this the spot for morning coffee and planning of the day's skiing as you look towards the resort. The living area also has Smart TV.

Taking the stairs one flight down, you will find yourself on the main sleeping floor of the chalet. First on your right is a double bedroom with an en-suite shower room. This bedroom can also be configured as a twin room. It has access to the spacious south-facing terrace, which it shares with the master en-suite adjacent. On the terrace you will find two warm baths, comfortably seating one person each, the ideal spot to revive tired limbs. The sumptuous master bedroom has a wonderfully spacious en-suite bathroom with a shower, as well as desk and chair, providing a tranquil space in which to relax or work. There are two further double/twin bedrooms on this floor which share a separate shower room and a separate toilet. One of these bedrooms enjoys its own balcony with alpine views of the majestic peaks in the distance.

There are two more bedrooms which are located on the ground floor. One of these is a bunk room, which sleeps two people, and has an en-suite shower room. Next door to this room is a spacious double/twin bedroom which also enjoys an en-suite shower room. Also located on this floor is a professional kitchen which is where all food will be prepared by our excellent team. Additionally, you will find the ski room with boot warmers, an additional room for storage, a guest WC and a wonderful sauna where tired muscles can retreat at days' end.

Villa Villekulla is sold on a catered or self-catered basis.

The chalet normally has a shared driving service from 8:30am – 1:00am when sold on a fully catered basis.

FACILITIES



REDEFINING THE LUXURY CHALET EXPERIENCE

INTERIOR

- Sleeps 12
- 340 Square metres
- 6 Bedrooms
- 11 Individual beds
- 6 Bathrooms
- 1 Additional WCs
- 12 Dining table seats
- 10 Living area seats

APPLIANCES

- TV
- Smart TV
- Wifi

WELLNESS AND RELAXATION

- Hot bath
- Sauna
- Spa

ADDITIONAL

- Cot/high chair available
- Heated boot warmers
- Private laundry facilities
- Private ski locker
- Indoor Parking: 4



LAYOUT



REDEFINING THE LUXURY CHALET EXPERIENCE

TOP FLOOR

- Open plan kitchen, dining and living room
- Balcony
- Terrace

GROUND FLOOR

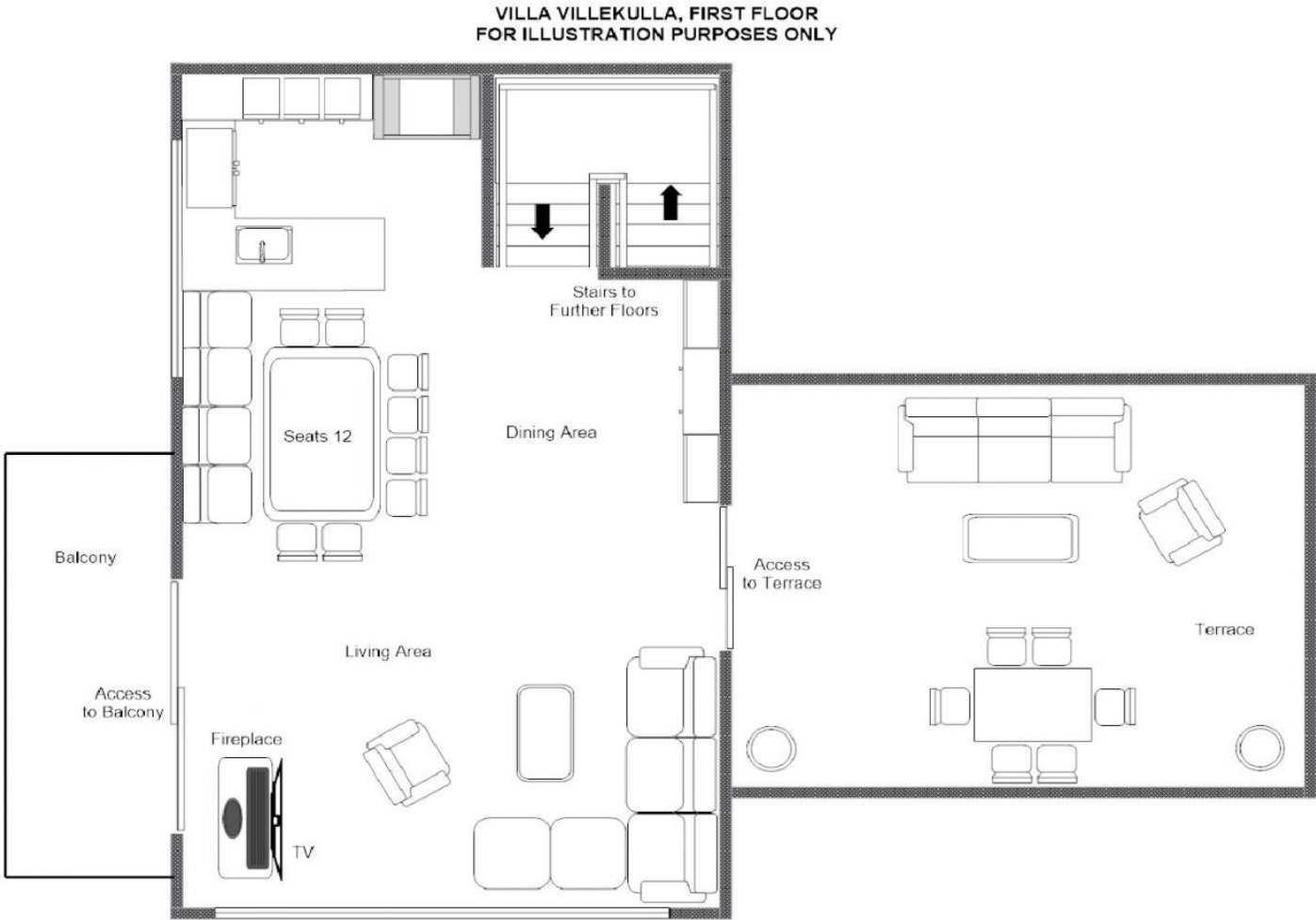
- Master double bedroom (en-suite bathroom and shower, terrace access)
- 1 twin/double bedroom (en-suite shower room, terrace access)
- 1 twin/double bedroom (balcony access)
- 1 twin/double bedroom
- Separate shower room and guest WC

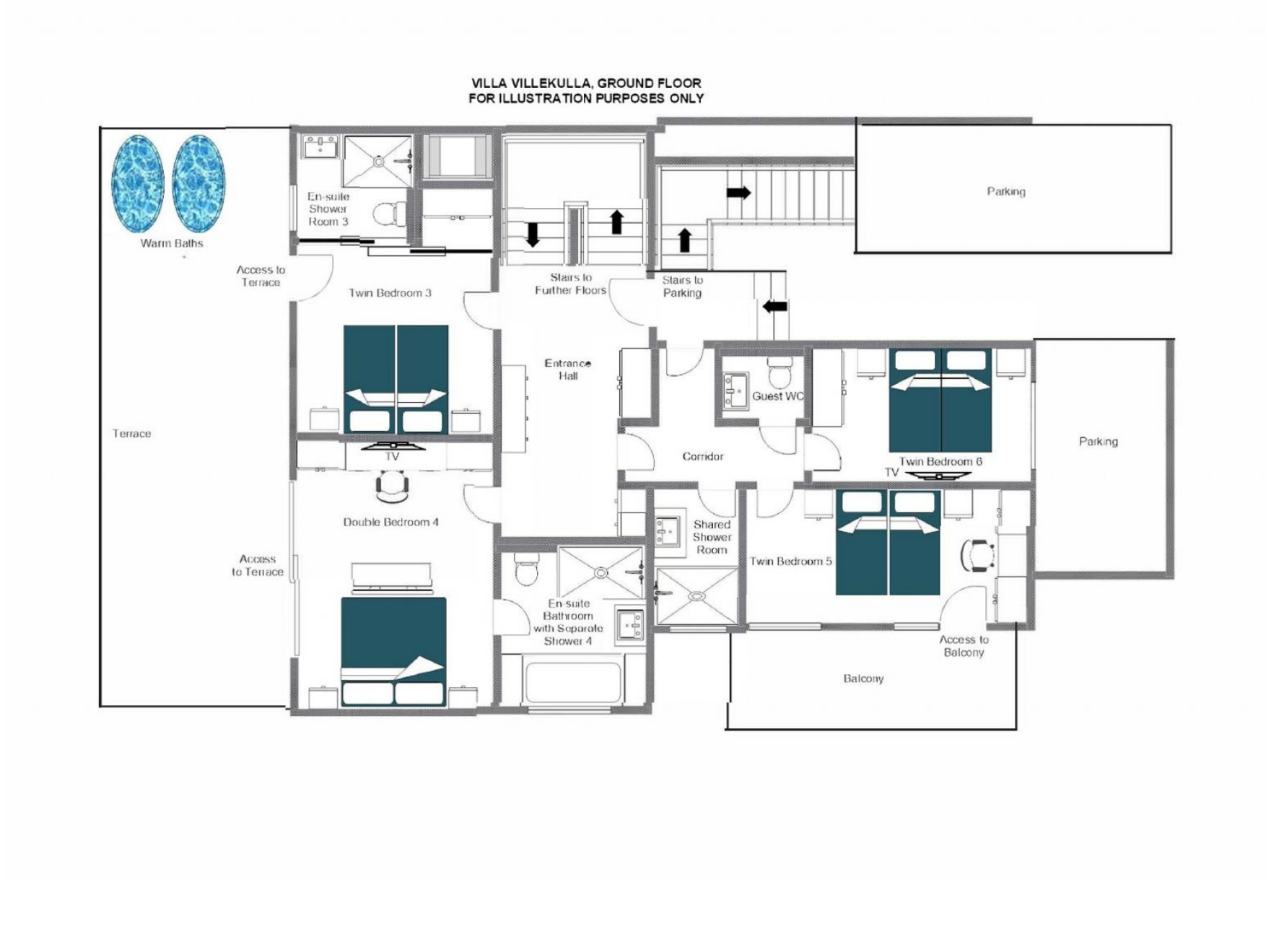
LOWER GROUND FLOOR

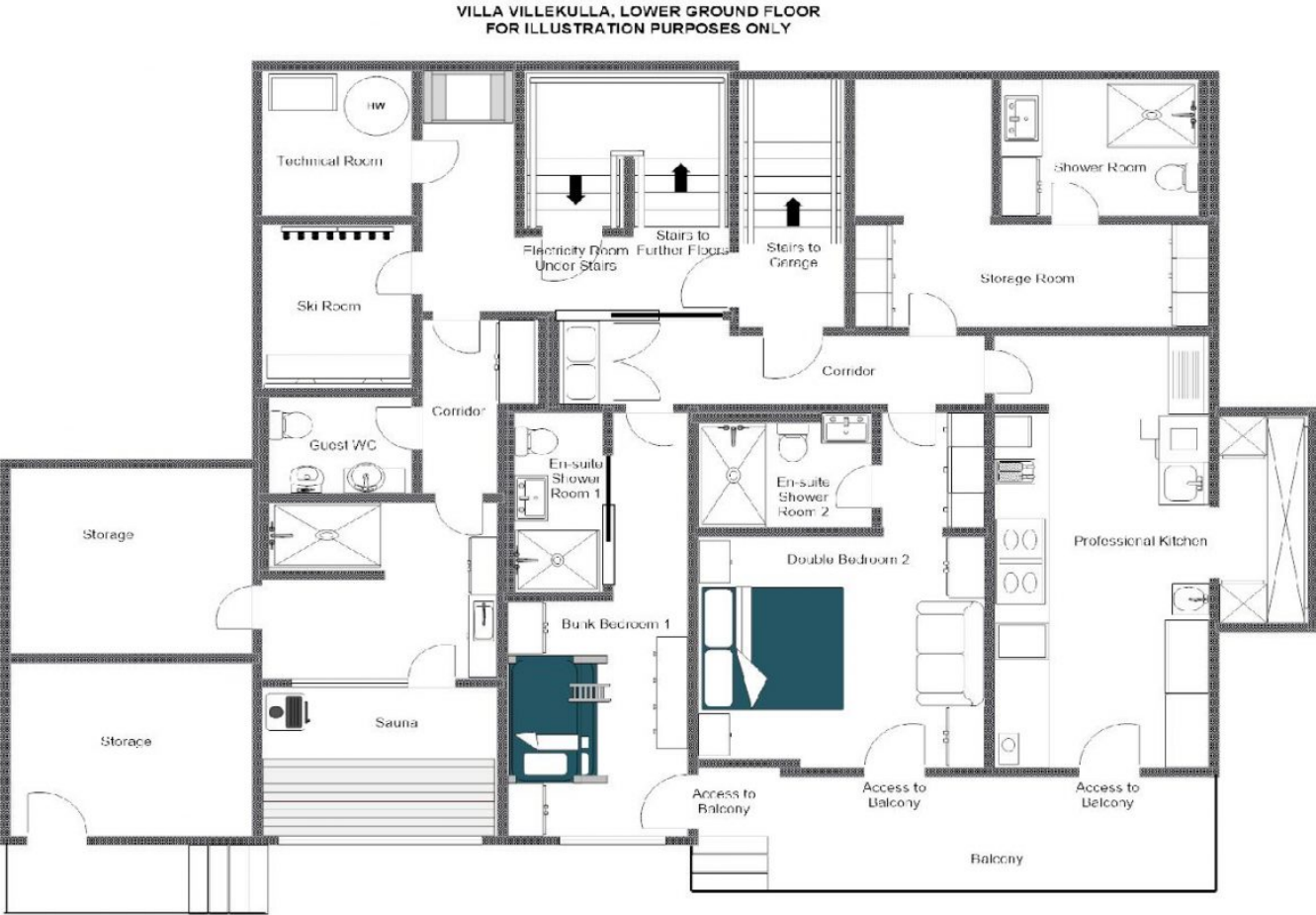
- 1 bunk room (sleeps 2)
- 1 twin/double bedroom (en-suite shower room)
- Professional kitchen
- Storage room with guest shower room and WC
- Ski room
- Guest WC
- Sauna











LOCATION



REDEFINING THE LUXURY CHALET EXPERIENCE



PROXIMITY

Galzigbahn - 20-minute walk or 4-minute drive Zammermoos piste - 1 minute walk

Village centre - 20-minute walk or 4-minute drive

GOOGLE CO-ORDINATES

47.126976, 10.252170





bramble
ski

PART OF
LE COLLECTIONIST