

BRUNNENHOF 10

A U S T R I A

LECH

BRUNNENHOF 10

LECH | Sleeps 8+2



REDEFINING THE LUXURY CHALET EXPERIENCE

BRUNNENHOF 10 encompasses everything you could want from a stylish alpine apartment, elegant entertainment areas, four beautiful bedrooms and an impressive shared pool and spa.

DESCRIPTION



REDEFINING THE LUXURY CHALET EXPERIENCE

The Brunnenhof residence is an exciting new addition to Lech's skyline. The building is home to 14 fabulous apartments and has undergone a complete renovation with all aspects being tastefully refurbished. The residence also boasts luxurious shared facilities including an indoor swimming pool, spa, hammam, sauna and treatment room. Tapping into Lech's incredible skiing and glamorous restaurant and social scene, the Brunnenhof residence is the ideal base for an unforgettable stay in Lech.

Brunnenhof 10 sleeps up to ten guests in four gorgeous bedrooms and is located on the second floor of this impressive building. This wonderful apartment showcases chic alpine style and contemporary fixtures and furnishing creating a space that is both rustic and glamorous, perfectly tuned into its location.

The apartment has a stunning open plan living, dining and kitchen, which is perfectly set up for entertaining and relaxing evenings after long days on the slopes. Decorated in neutral tones and hues, the space exudes style and sophistication and has a tranquil and calming atmosphere. The living area has double glass doors that fill the room with light and lead onto the balcony, where the views across Lech are breath-taking. The dining table comfortably seats 8 guests and is the perfect setting for glamorous evening meals with friends and family.

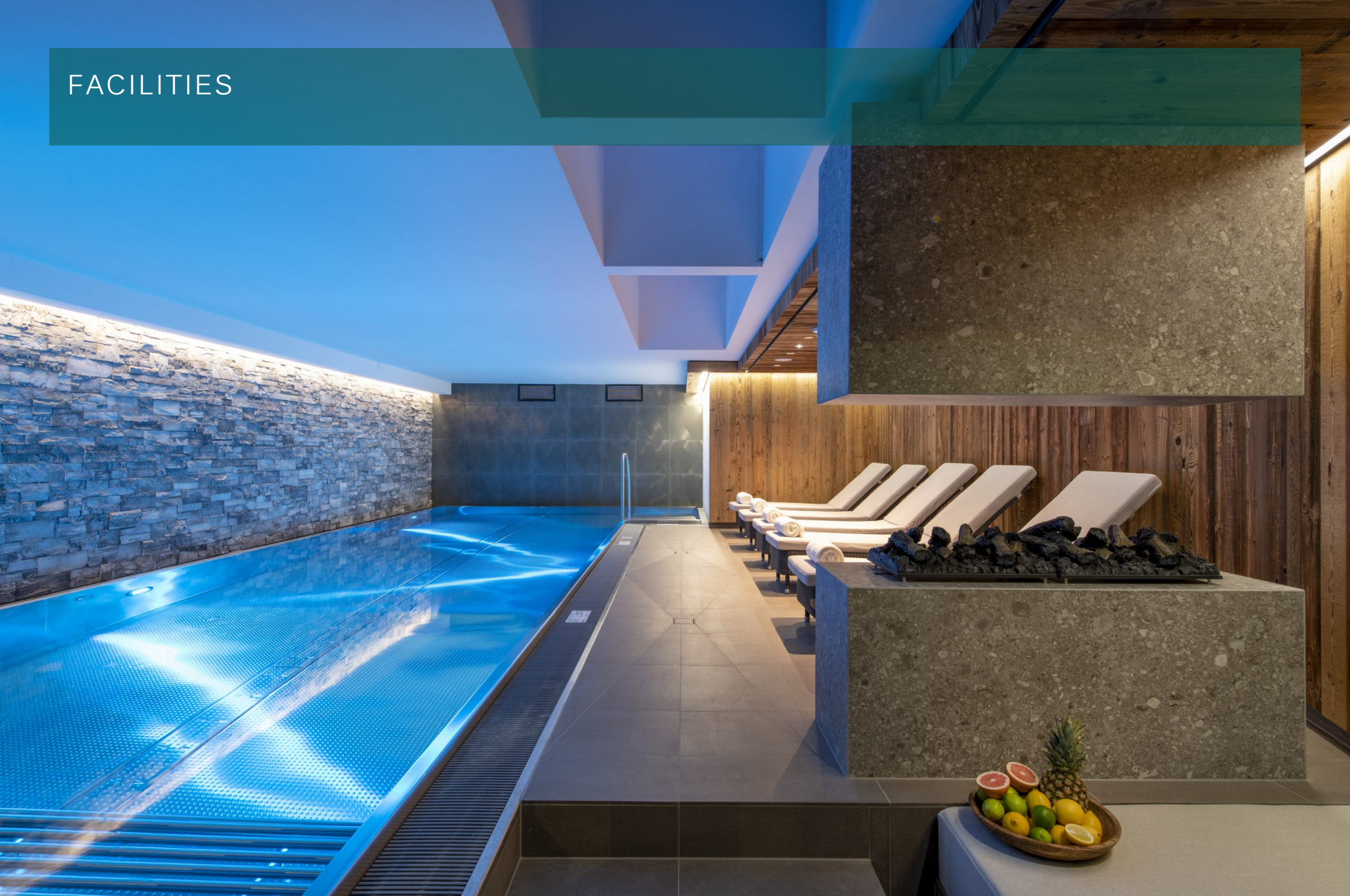
There are four beautiful bedrooms in the apartment, each with their individual style and touches. The master-bedroom is toward the front of the property and has an en-suite bathroom with separate shower. The second double bedroom is also towards the front of the apartment and has an en-suite bathroom with separate shower, with access to terrace shared with the living room. The third bedroom is a double with en-suite shower room and access. The fourth and final bedroom is a cosy quad bunkroom, perfect for four children or two adults, with an en-suite shower room.

Brunnenhof is located only a short 5-minute walk from the Schlosskopf chairlift and it is possible for experienced skiers to ski within 100 metres of the apartment, by skiing a short section off the side of the piste. The village centre is also only a 10-minute walk away, where you will find a sophisticated atmosphere, with stylish boutiques and restaurants.

Brunnenhof 10 ticks all the boxes for an idyllic ski retreat and is a fantastic base for an unforgettable ski trip.

The luxury Lech apartment can be taken on a self-catered, BnB or accommodation only basis. The apartment comes with one parking space.

FACILITIES



REDEFINING THE LUXURY CHALET EXPERIENCE

INTERIOR

- Sleeps 8 + 2
- 130 Square metres
- 4 Bedrooms
- 10 Individual beds
- 4 Bathrooms
- 8 Dining table seats

APPLIANCES

- Apple TV
- TV
- Wifi

WELLNESS AND RELAXATION

- Shared access to Hammam
- Shared access to pool
- Shared access to sauna
- Spa

ADDITIONAL

- Corporate chalets
- Cot/high chair available
- Family-friendly chalets
- Private laundry facilities
- Shared ski locker



LAYOUT



REDEFINING THE LUXURY CHALET EXPERIENCE

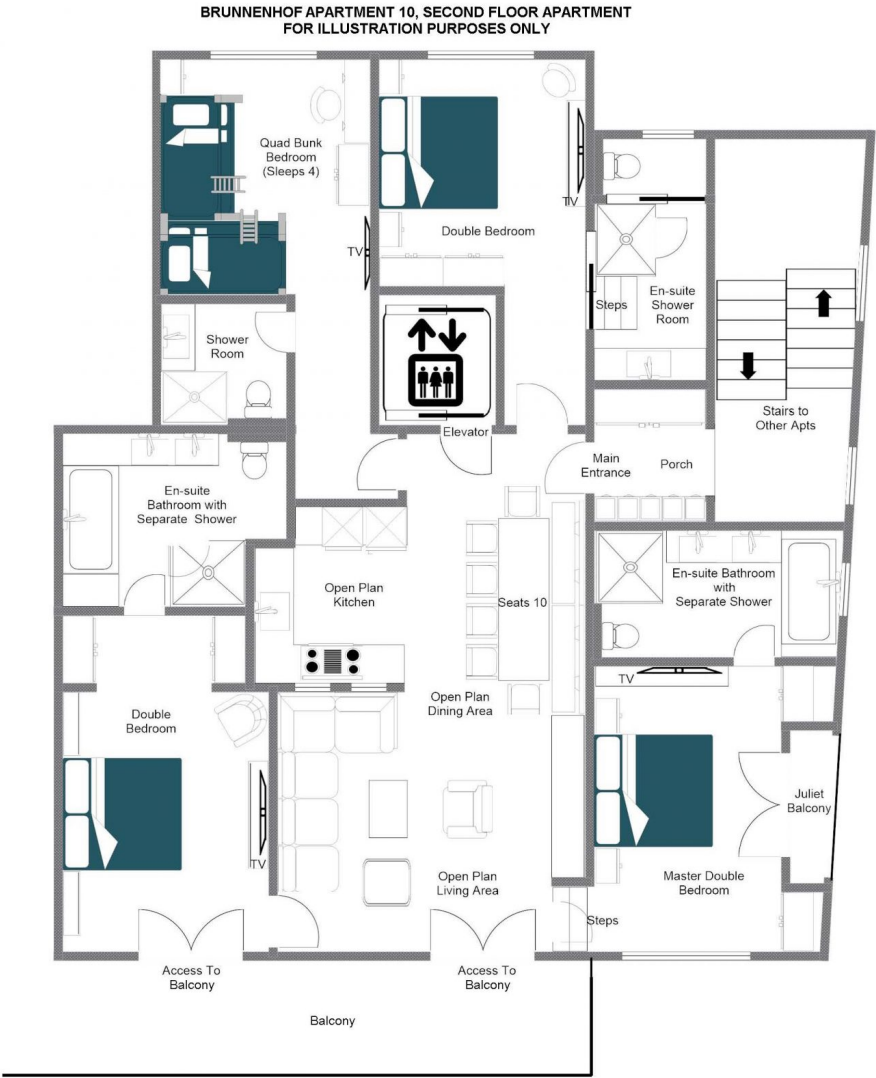
SECOND FLOOR

- Open plan living, dining and kitchen area
- 1 Double bedroom (en-suite bathroom with separate shower)
- 1 Double bedroom (en-suite bathroom with separate shower)
- 1 Double bedroom (en-suite shower room)
- 1 quad bunk room (sleeping 4, en-suite shower room)



FLOOR PLAN SECOND FLOOR

FOR ILLUSTRATION PURPOSES ONLY







REDEFINING THE LUXURY CHALET EXPERIENCE

LOCATION



PROXIMITY

Schlosskopf chairlift - 6-minute walk
Schleggelkopf chairlift - 12-minute walk

Village centre - 10-minute walk or a 3-minute drive

GOOGLE CO-ORDINATES

47.215991, 10.148279





The image is a composite of two night-time photographs. The upper half shows a majestic, snow-covered mountain peak with jagged ridges, set against a deep blue night sky filled with stars. The lower half depicts a cozy mountain village, likely in the Swiss Alps, with numerous chalets and houses glowing with warm, yellow interior lights. The village is nestled in a valley, with a prominent church steeple visible in the center. In the foreground, a smooth, snow-covered slope leads down towards the town. The overall atmosphere is serene and inviting, typical of a winter ski resort.

brambleTM
ski