

BRUNNENHOF 13

A U S T R I A

LECH

BRUNNENHOF 13

LECH | Sleeps 8+2 **spa**



REDEFINING THE LUXURY CHALET EXPERIENCE

A BEAUTIFUL NEW APARTMENT in the beguiling village
of Lech

DESCRIPTION



REDEFINING THE LUXURY CHALET EXPERIENCE

Introducing the newly completed Brunnenhof Residence; one of Lech's most exciting new developments for the 2020/21 season. The Brunnenhof luxury apartments will be Bramble Ski's latest addition to the residence portfolio in the world-renowned resort of Lech. The building has been completely renovated to the highest standard and is home to 14 beautiful apartments. This unique mountain residence offers guests luxury alpine living at its best with state-of-the-art spa facilities and incredible, mountain views throughout.

Brunnenhof 13 is a luxurious four-bedroom, apartment which has been finished to the highest standard. Beautiful, alpine inspired wood and sumptuous furnishings have been cleverly combined to create a modern mountain retreat. Offering three large bedrooms, plus a quad bunk room sleeping up to 10 in total, this property is perfect for families or groups of friends looking to escape to the mountains. Spread over one floor, this third floor apartment is ideally located only a short stroll from the ski lift and centre of the village. Lech is a charismatic village which safeguards its traditions and has a timeless charm and sophistication, not to mention, sublime skiing.

This mountain retreat is the ideal base for families with the closest lift, the Schlosskopf chairlift, only a six-minute walk away.

Luxury linens, soft tones and meticulous attention to detail has ensured a stylish and comfortable atmosphere throughout. With floor to ceiling windows, the uninterrupted views of the mountain from the living and dining area are sublime and the natural light floods through the apartment creating a wonderful ambiance. The open plan living, dining and kitchen is the ideal arrangement for socialising and entertaining. A central fireplace separates the cosy living area with a large "L" shaped sofa and the main dining area. Enjoy your favourite après ski drink from the properties well stocked bar or relax with a book in front of the roaring fire.

The dining table comfortably sits eight guests and has easy access to the open plan kitchen which has everything you need to make yourself at home in the mountains. Enjoy dining in or if you prefer, have a drink on the terrace before experiencing one of Lech's finest restaurants.

Moving through to the bedrooms, the beautiful master bedroom has a large en-suite bathroom perfect for warming up aching muscles after a hard day on the slopes. There is also a TV and desk should you need to catch up on some emails. There is a further, large double bedroom across the hall, which has an en-suite shower room. The third double bedroom shares a family bathroom with a wonderful, quad bunk room. This luxury apartment offers the perfect space for friends and families on holiday together.

Guests have access to the exclusive spa facilities making this one of Lech's most sought-after residences. An indoor swimming pool, spa, hammam, sauna and treatment room provide the ultimate in relaxation after a hard day on the slopes.

Brunnenhof 13 is ideally located only a ten-minute walk from the centre of the village and a six-minute walk from the nearest lift, that will take you up and onto the slopes within minutes. If you are an experienced skier, you can ski back close to the apartment, as it is located only a few hundred metres from the piste.

The Lech apartment can be taken on a self-catered, bed & breakfast or accommodation only basis, benefiting from Bramble Ski's renowned service throughout your stay. The apartment comes with one parking space.

FACILITIES



REDEFINING THE LUXURY CHALET EXPERIENCE

INTERIOR

- Sleeps 8 + 2
- 133 Square metres
- 4 Bedrooms
- 7 Individual beds
- 3 Bathrooms
- 8 Dining table seats
- 8 Living area seats

APPLIANCES

- TV
- Wifi

WELLNESS AND RELAXATION

- Balcony
- Shared access to Hammam
- Shared access to pool
- Shared access to sauna
- Spa

ADDITIONAL

- Cot/high chair available
- Family-friendly chalets
- Private laundry facilities
- Shared ski locker



LAYOUT

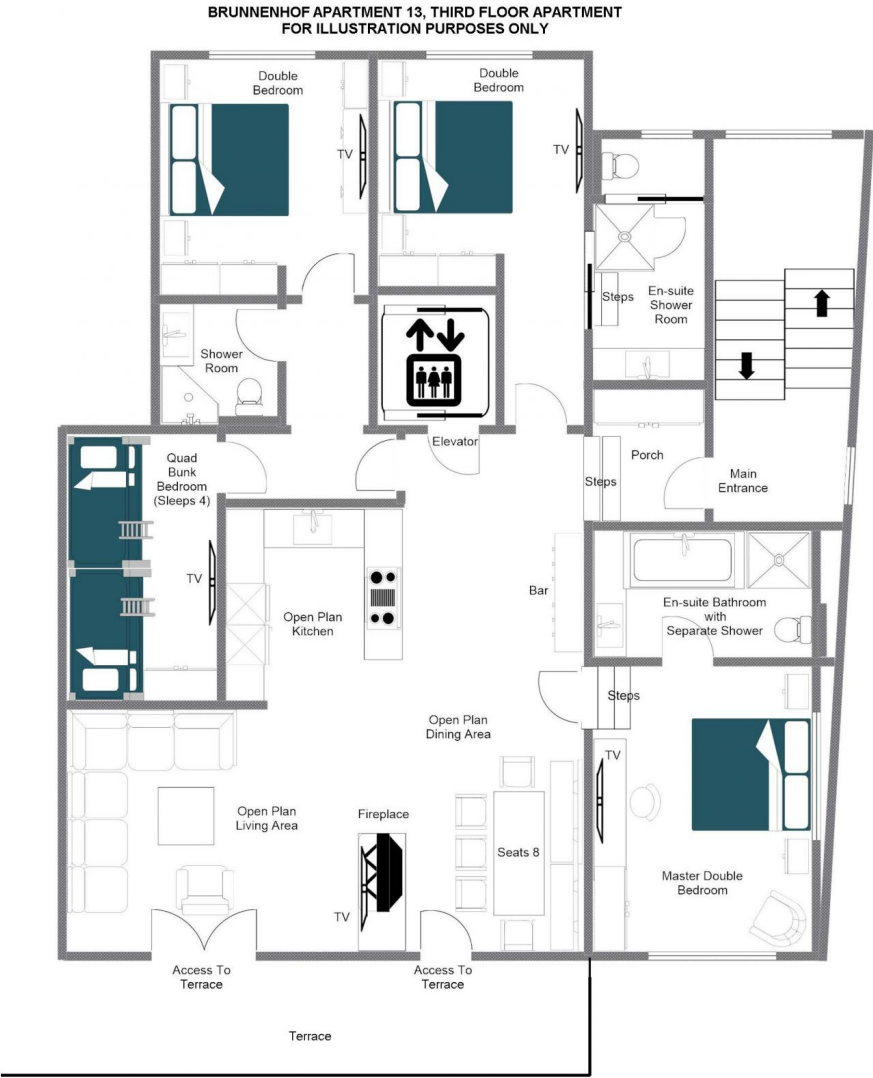


REDEFINING THE LUXURY CHALET EXPERIENCE

THIRD FLOOR

- Open plan living room, dining room and kitchen
- 1 master bedroom (en-suite bathroom with separate shower, desk, TV)
- 1 double bedroom (en-suite shower room, TV)
- 1 double bedroom (shared shower room, TV)
- 1 quad bunk room (shared shower room)









REDEFINING THE LUXURY CHALET EXPERIENCE

LOCATION



PROXIMITY

Schlosskopf chairlift - 6-minute walk
Schleggelkopf chairlift - 12-minute walk

Village centre - 10-minute walk or a 3-minute drive

GOOGLE CO-ORDINATES

47.215991, 10.148279





The image is a vertical composition of two night scenes. The top half shows a majestic, snow-covered mountain peak with jagged ridges, illuminated by a soft, cool light against a dark blue sky with faint stars. The bottom half shows a ski resort town nestled in a valley, with numerous buildings glowing with warm yellow lights. The town is surrounded by snow-covered slopes and evergreen trees. A ski lift is visible on the right side of the town. The overall atmosphere is serene and inviting.

brambleTM
ski