

CHALET ALMAJUR
AUSTRIA
ST ANTON

CHALET ALMAJUR

ST ANTON | Sleeps 10

alpine
classic



REDEFINING THE LUXURY CHALET EXPERIENCE

THIS LANDMARK BUILDING,has been completely rebuilt in 2013 to create one of St. Anton's most desirable properties. Located in the exclusive Nasserien area, the chalet is a short stroll from the Nasserein gondola.

DESCRIPTION



This landmark building has been completely rebuilt in 2013 to create one of St. Anton's most desirable properties. Located in the exclusive Nasserien area, the chalet is a short stroll from the Nasserein gondola. The chalet boasts a very spacious bright and elegant drawing room where you can lounge on the sumptuous sofas, watching the flames dance in the fire, while your private chef prepares your evening meal in the well-equipped kitchen. Dinner is served in the sophisticated wood-beamed dining room where the table comfortably seats ten guests.

Almajur is set out over three floors and sleeps a total of ten guests in five good sized en-suite bedrooms (all of which can either be configured as twin or double beds). The chalet has been wonderfully furnished throughout and includes a cinema room, perfect for entertaining the children when the snow closes in.

You enter the chalet on the ground floor into an impressive reception area. The ski and boot room is located on this floor as is the cinema room, the laundry room, and guest toilet. A twin/double bedroom with ensuite shower room is also located on this floor.

Stairs lead to the first floor where the main reception rooms are located: separate kitchen, separate drawing room, and separate living/dining room. A large terrace, with views of the valley and surrounding peaks, is accessed from the drawing room and this floor has its own separate entrance.

Four en-suite bedrooms are located on the top floor of the chalet. Two of these have access to the balcony at the front of the property. Two of these rooms have en-suite bathrooms while the other two bedrooms have en-suite shower rooms.

The chalet is sold on a catered or self-catered basis. When sold on a fully catered basis, the chalet has a shared driver service which runs from 8am - 1am daily.

The chalet has two exterior parking spaces.

FACILITIES



INTERIOR

- Sleeps 10
- 275 square metres
- 5 Bedrooms
- 10 Individual Beds
- 5 Bathrooms
- 1 Additional WCs
- 10 Dining Table Seats
- 8 Living Area Seats

APPLIANCES

- TV/DVD
- Hi-Fi/CD player/MP3 player
- Wifi

ENTERTAINMENT

- Dedicated cinema room

ADDITIONAL

- Private laundry facilities
- Private ski locker
- Cot/high chair available



LAYOUT



GROUND FLOOR

- Cinema room
- Laundry room
- 1 x twin/double bedroom (ensuite shower room)
- Entrance hall
- Guest w.c
- Ski/boot room

1ST FLOOR

- Kitchen
- Living area
- Dining room

2ND FLOOR

- 1 x twin/double bedroom (en-suite bathroom)
- 1 x twin/double bedroom (en-suite bathroom)
- 1 x twin/double bedroom (en-suite shower room)
- 1 x twin/double bedroom (en-suite shower room)



FLOOR PLAN GROUND FLOOR

FOR ILLUSTRATION PURPOSES ONLY



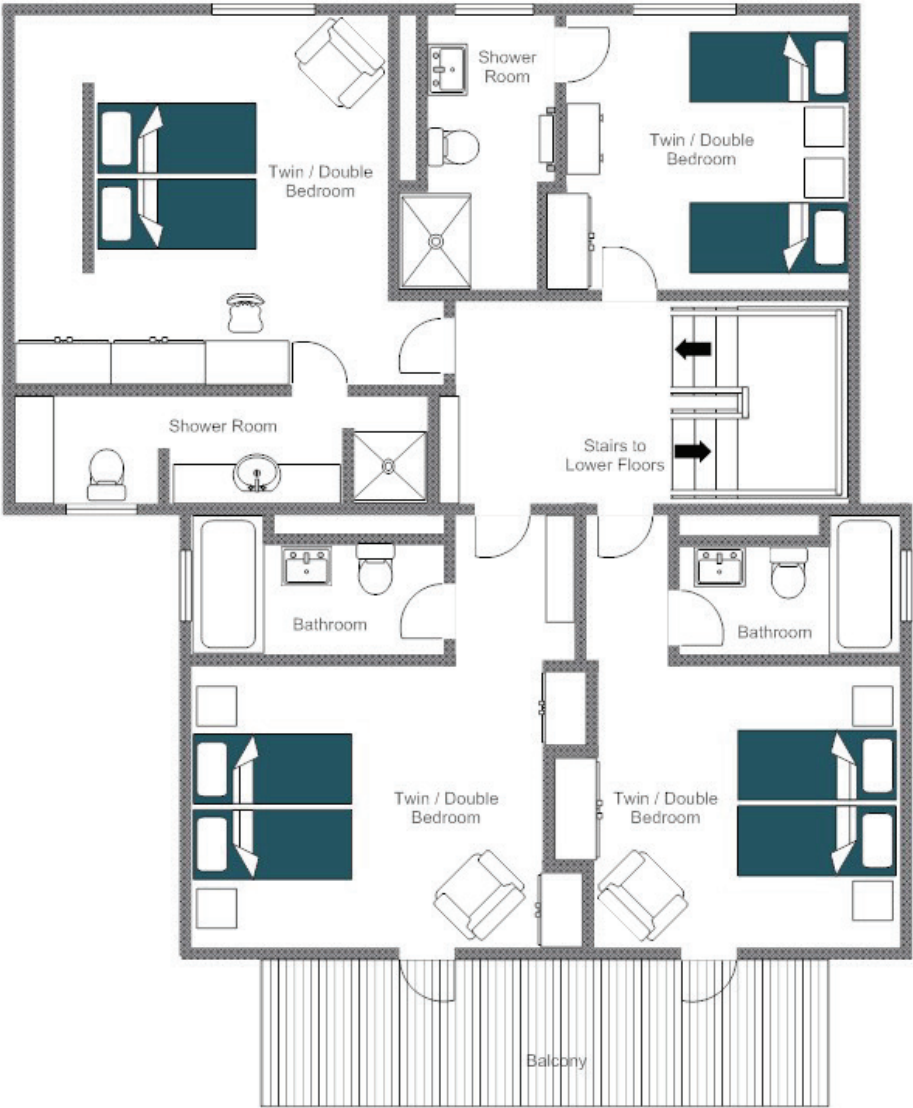
FLOOR PLAN 1ST FLOOR

FOR ILLUSTRATION PURPOSES ONLY



FLOOR PLAN TOP FLOOR

FOR ILLUSTRATION PURPOSES ONLY









LOCATION



REDEFINING THE LUXURY CHALET EXPERIENCE

PROXIMITY

Nasserein lift station - 3 minute walk

Central St Anton - 10 minute walk/2 minute drive

GOOGLE CO-ORDINATES

47.136432, 10.276441







brambleTM
ski