

CHALET CARAT

FRANCE

COURCHEVEL

CHALET CARAT

COURCHEVEL | Sleeps 8+2 spa



REDEFINING THE LUXURY CHALET EXPERIENCE

A STUNNING CHALET BLENDING traditional local
architecture with opulent interior design.

DESCRIPTION



REDEFINING THE LUXURY CHALET EXPERIENCE

Perfectly positioned in Courchevel 1850, the beautiful Chalet Carat marries traditional charm, with elegant furnishings, a chic colour palette and all the modern facilities you would desire from an alpine home. Sleeping up to 10 guests in five bedrooms, it is the ideal place to bring your loved ones together for an unforgettable ski holiday.

The living area of the chalet is located on the top floor, where a plush L-shaped sofa by the fireplace invites you to curl up in front of the TV and relax together. Floor-to-ceiling windows let winter sunshine into the space, framed by richly textured curtains and offering views to the mountains beyond.

The elegant dining table seats 8 guests across 3 comfortable armchairs and an L-shaped bench, with cosy ambient lighting creating the perfect setting for meals with your family. Set the tone in the whole space with the built-in Sonos system.

Overlooking the dining area is the high-spec open-plan kitchen, complete with everything a chef could wish for including stainless steel surfaces, Smeg appliances, a Delonghi coffee machine and KitchenAid, for whipping up your favourite meals with ease.

There is also a guest WC and a children's double bedroom on this floor sleeping two under the eaves, which is connected by a few steps to a spacious shower room for convenience. Children will love this cosy hideaway with its arched windows and a TV to watch their favourite movies on while adults enjoy after-dinner drinks next door.

Down the staircase that winds around the stunning statement crystal chandeliers, you will find the sleeping floor. The plush master bedroom comes complete with a cosy seating area, floor-to-ceiling windows, access to the terrace, a beautiful white marble en-suite bathroom and a unit at the foot of the bed which houses the retractable TV.

The other two double bedrooms on this floor have wall-mounted TVs and their own shower rooms in the same marble finish, with one sharing access to the same terrace as the master.

Each decorated in neutral, calming colours with lots of Alpine soft furnishings, you will wake feeling rested, refreshed and ready for an exciting day on the slopes.

Chalet Carat's lower ground floor is dedicated to rest, relaxation and entertainment. With a white marble-style indoor swimming pool, bar and spa area, you can either enjoy soaking in the pool or sipping a cocktail at the bar. The velvet-walled home cinema is perfect for movie nights, with popcorn, your favourite film on the big screen and your loved ones - sink into the comfy sofas and relax together.

Down a few more steps past the wine cave, there is a further WC, a storage room for your outerwear with an adjoining private laundry room, a large ski/storage room with heated boot warmers and a sauna to soothe tired ski legs in. From here, you can access the spacious shared underground garage.

Included in the capacity, there is a separate apartment accessed by a short walk from the chalet through the garage, or through the main garage door. The apartment is decorated in a more cosy and traditional style, complete with a comfortable double bedroom with an en-suite shower room, a living room with a smart TV and a kitchen/dining area. This extra space is ideal for an overflow of guests to enjoy a welcoming and private space of their own.

Come together on the sun-trap terrace to enjoy breakfast al fresco at the outdoor table seating four, before taking the easy walk to the Bellecote slope, from where you can ski to further lifts and explore the expansive ski area of Les Trois Vallées. With the centre of the village only a short drive away, you can enjoy the fantastic shopping, luxurious bars and delicious restaurants with ease.

The underground garage is shared between a total of 5 chalets in the Domaine de Bellecôte, accessible from the lower ground floor.

There is a 2-week minimum over the Christmas and New Year period.

FACILITIES



REDEFINING THE LUXURY CHALET EXPERIENCE



INTERIOR

- Sleeps 8 + 2
- 300 Square metres
- 5 Bedrooms
- 5 Individual beds
- 5 Bathrooms
- 2 Additional WCs
- 8 Dining table seats

APPLIANCES

- TV
- Sonos
- Video Projector
- Wifi

WELLNESS AND RELAXATION

- Indoor pool
- Relaxation Space
- Sauna
- Spa
- Terrace

ENTERTAINMENT

- Bar
- Dedicated cinema room
- Wine cave

ADDITIONAL

- Cot/high chair available
- Family-friendly chalets
- Heated boot warmers
- New to Bramble Ski
- Private laundry facilities
- Private ski locker
- Wood burning fireplace





LAYOUT



REDEFINING THE LUXURY CHALET EXPERIENCE

FIRST FLOOR

- Open plan kitchen, living and dining area
- 1 Children's double bedroom (sleeps 2)
- Guest WC

GROUND FLOOR

- 1 Double master bedroom (en-suite bathroom with separate shower, terrace access)
- 1 Double bedroom (en-suite shower room, TV, terrace access)
- 1 Double bedroom (en-suite shower room, TV)
- Children's shower room

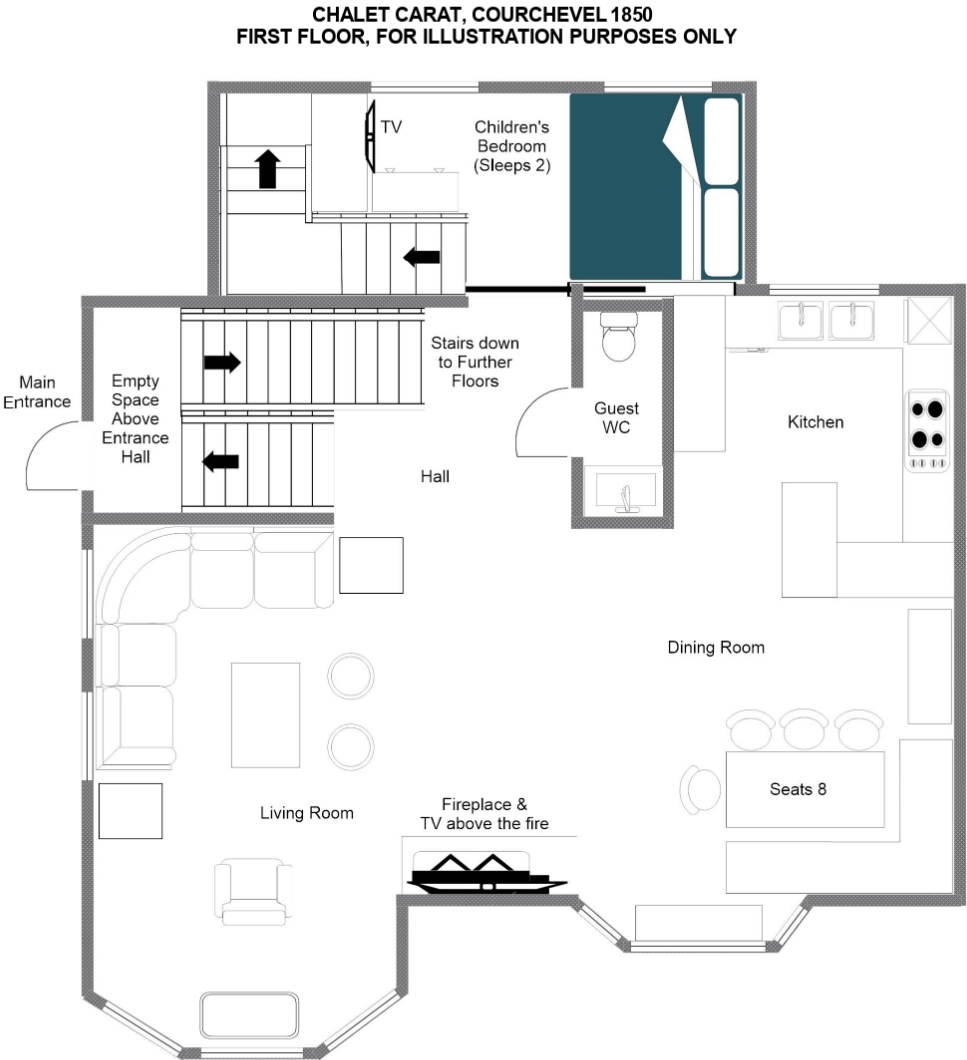
LOWER GROUND FLOOR

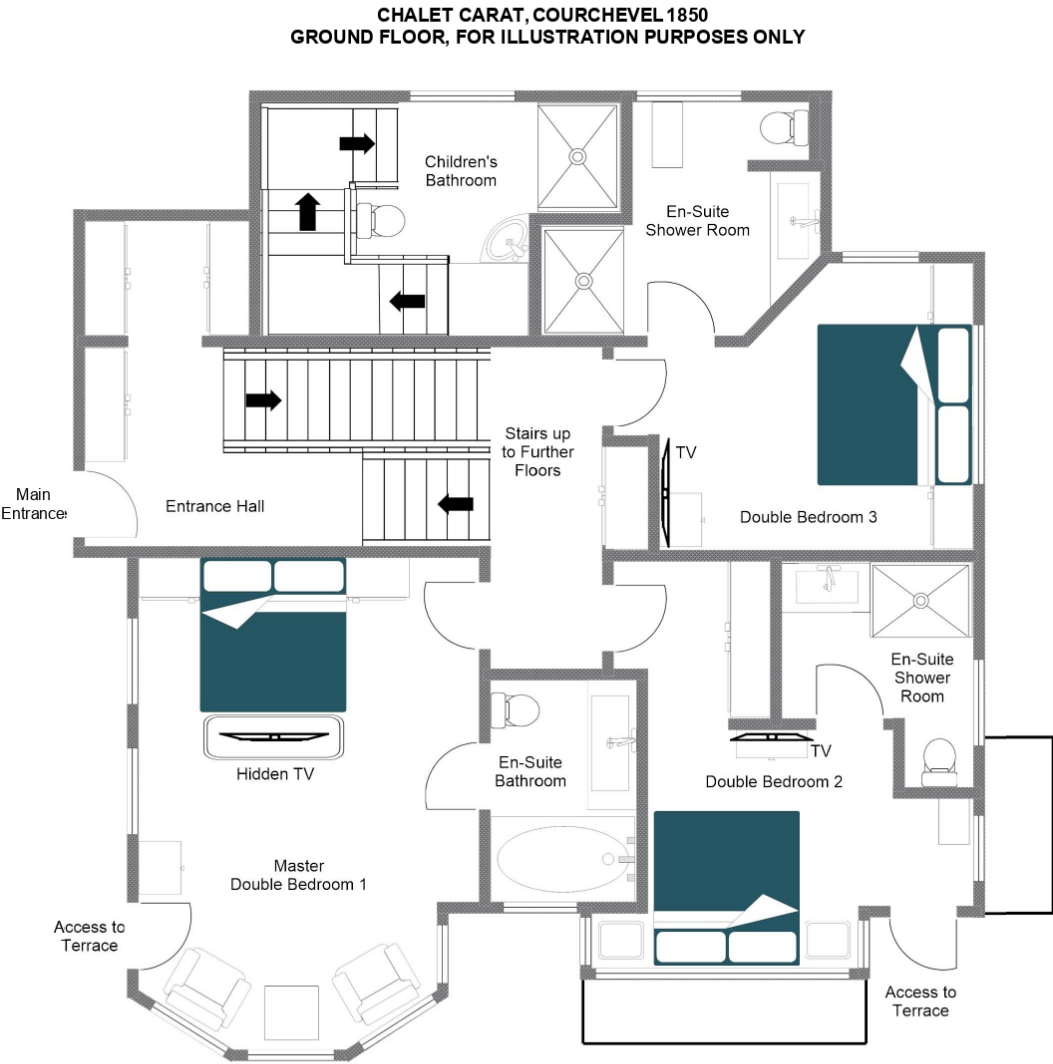
- Indoor Swimming pool, spa and bar
- Cinema room
- Wine cave
- Ski room
- Storage room
- Sauna
- Laundry room
- Garage access

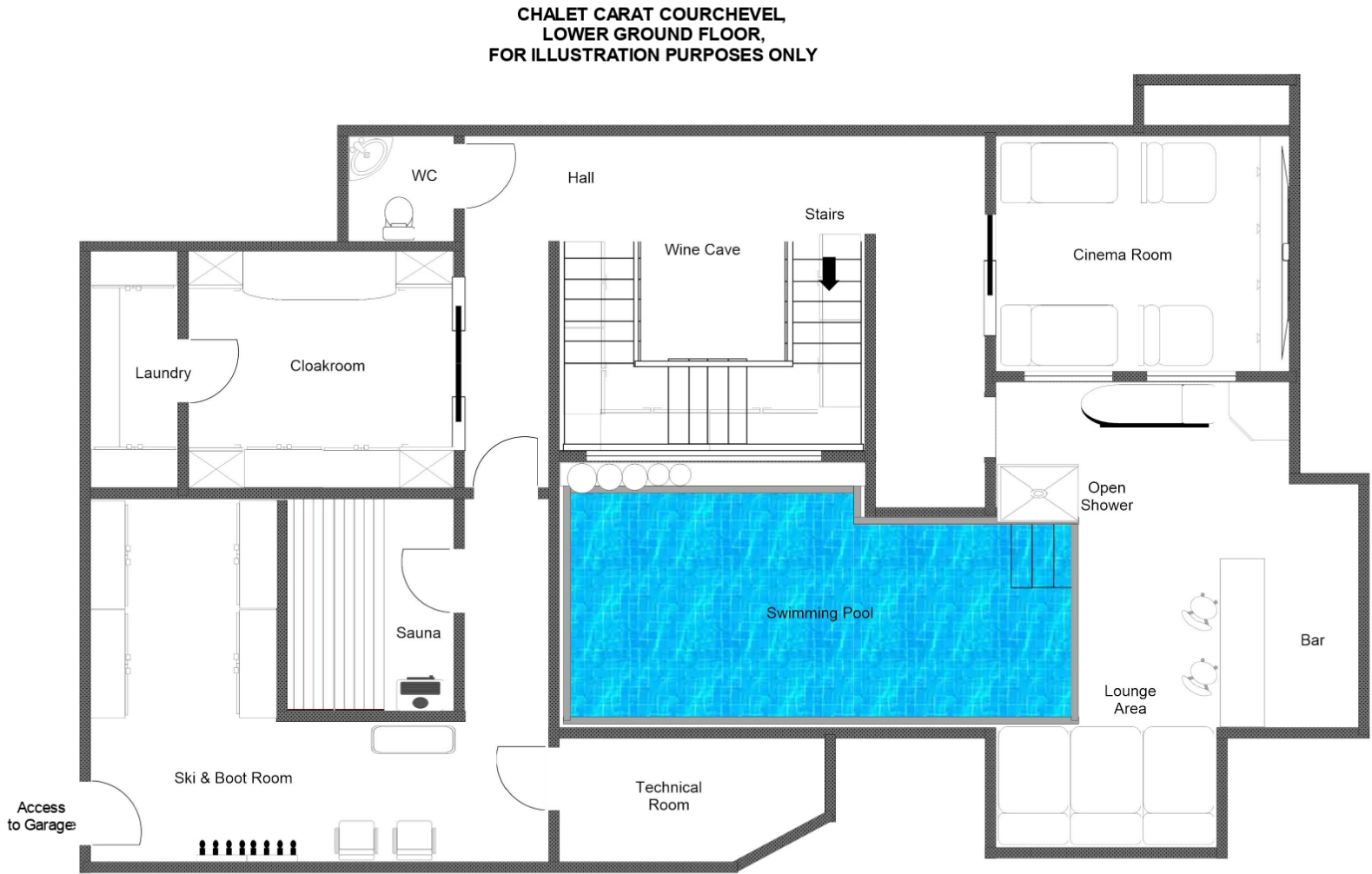
SEPARATE APARTMENT

- Kitchen and dining area
- Living room
- 1 Double bedroom (en-suite shower room)











LOCATION



REDEFINING THE LUXURY CHALET EXPERIENCE

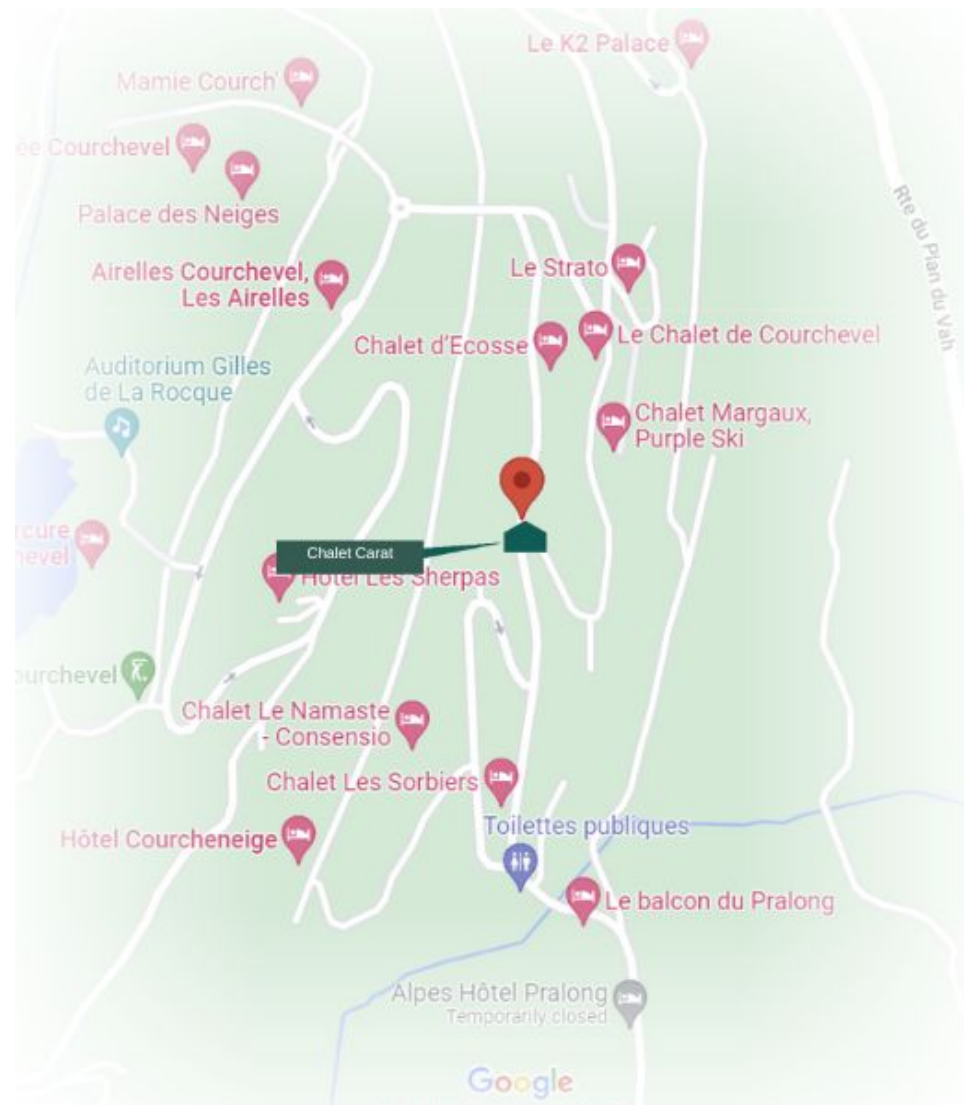
In an exclusive area a 3-minute drive from the centre of Courchevel 1850, and a 100m walk to the Bellecôte piste.

PROXIMITY

Village centre – 3-minute drive or 20-minute walk Bellecôte piste - 100m walk

GOOGLE CO-ORDINATES

45.408157, 6.6366978







A scenic view of a snowy mountain landscape. In the foreground, there's a large, smooth mound of white snow. Behind it, several evergreen trees are covered in snow. In the background, majestic snow-capped mountains rise against a clear, vibrant blue sky. Two ski lift gondolas are visible; one is prominently in the center, suspended from a cable, with the word "COURCHEVEL" printed on its side. Another gondola is visible further to the left. The overall atmosphere is bright and crisp, typical of a clear winter day in a ski resort.

brambleTM ski