

# CHALET DELORMES

---

SWITZERLAND

VERBIER

# CHALET DELORMES

VERBIER | Sleeps 14+1 **spa**

alpine  
luxe



REDEFINING THE LUXURY CHALET EXPERIENCE

CHALET DELORMES OCCUPIES one of Verbier's most impressive locations. Nestled in the exclusive L'Hameau development surrounded by garden, the chalet is in a prime position just 100m from the Le Rouge piste and a short stroll from the beginner nursery slopes. A luxurious spacious private home, Chalet Delormes has every comfort you could possibly wish for from your hideaway in the mountains.



# DESCRIPTION



REDEFINING THE LUXURY CHALET EXPERIENCE

Chalet Delormes occupies one of Verbier's most impressive locations. Nestled in the exclusive L'Hameau development surrounded by garden, the chalet is in a prime position just 100m from the Le Rouge piste and a short stroll from the beginner nursery slopes. A luxurious spacious private home, Chalet Delormes has every comfort you could possibly wish for from your hideaway in the mountains.

Sleeping 15 people in 7 individually designed bedrooms, this standalone luxury chalet is one of a kind. All the bedrooms have either en-suite or private shower/bathrooms. Traditional materials have been combined with the artistic vision of the owner to create a sumptuous chalet where no attention to detail has been spared.

You enter the chalet into a spacious hallway. On this floor is the well-equipped ski room and an additional guest w.c. Beautiful furnishings, sumptuous textures and minimalist, contemporary design create an impressive master bedroom. Floor to ceiling French windows open out onto a shared terrace where the views are simply breath-taking. The impressive en-suite bathroom has his and her sinks, a large free standing bath and separate shower. There is a further twin/double bedroom with an en-suite bathroom and French windows opening out onto the terrace.

The main living area is located on the second floor. Sliding doors open out onto the large terrace allowing natural light to flood in. Focused around the large stone

fireplace, the careful design has created an elegant and sophisticated space, perfect for entertaining. Overlooking the dining area is the fully equipped kitchen which has been finished to the highest standard. Also on this floor is a twin double bedroom and a bunk room sleeping 2 people. These bedrooms share a contemporary en-suite bathroom. A small stair case leads of the kitchen area to the mezzanine double bedroom situated in the eaves. This bedroom has an en-suite shower room.

One of the highlights of the chalet is the wellness area which is located on the ground floor. An indoor hot tub, sauna and rain showers provide ultimate relaxation. You can also find your way out to the spacious sunny garden from this floor. As well as the spa there is a TV and games room. A pool table and dart board provide endless entertainment, whilst the large L shaped sofa provides the perfect spot to relax and unwind in front of the fire. There is a small kitchen and bar area. Also on this floor is a twin/double bedroom with en-suite bathroom and French windows which open out onto the lovely sunny garden. There is also a children's bunk room sleeping three which has a private shower room.

The chalet is normally provided with a 24 hour 4x4 driver service when sold on a full service catered basis.

The chalet is sold on a catered basis only.



# FACILITIES



REDEFINING THE LUXURY CHALET EXPERIENCE

## INTERIOR

- Sleeps 14 + 1
- 7 Bedrooms
- 13 Individual Beds
- 7 Bathrooms
- 1 Additional WCs
- 14 Dining Table Seats
- 8 Living Area Seats

## APPLIANCES

- TV/DVD
- Wifi
- Sonos

## WELLNESS AND RELAXATION

- Indoor hot-tub
- Sauna
- Spa

## ENTERTAINMENT

- TV/games room
- Pool/snooker table

## ADDITIONAL

- Wood burning fireplace
- Private laundry facilities
- Private ski locker
- Cot/high chair available





# LAYOUT



REDEFINING THE LUXURY CHALET EXPERIENCE



## TOP FLOOR

- 1 double bedroom (en-suite shower room)

## LIVING FLOOR (SECOND FLOOR)

- Open plan living/dining area and kitchen
- 1 bunk room (sleeping 2, shared en-suite bathroom)
- 1 twin/double bedroom (shared en-suite bathroom)

## ENTRANCE LEVEL (FIRST FLOOR)

- 1 master double bedroom (en-suite bathroom, terrace access)
- 1 twin/double bedroom (en-suite bathroom)
- Ski room
- Guest w.c

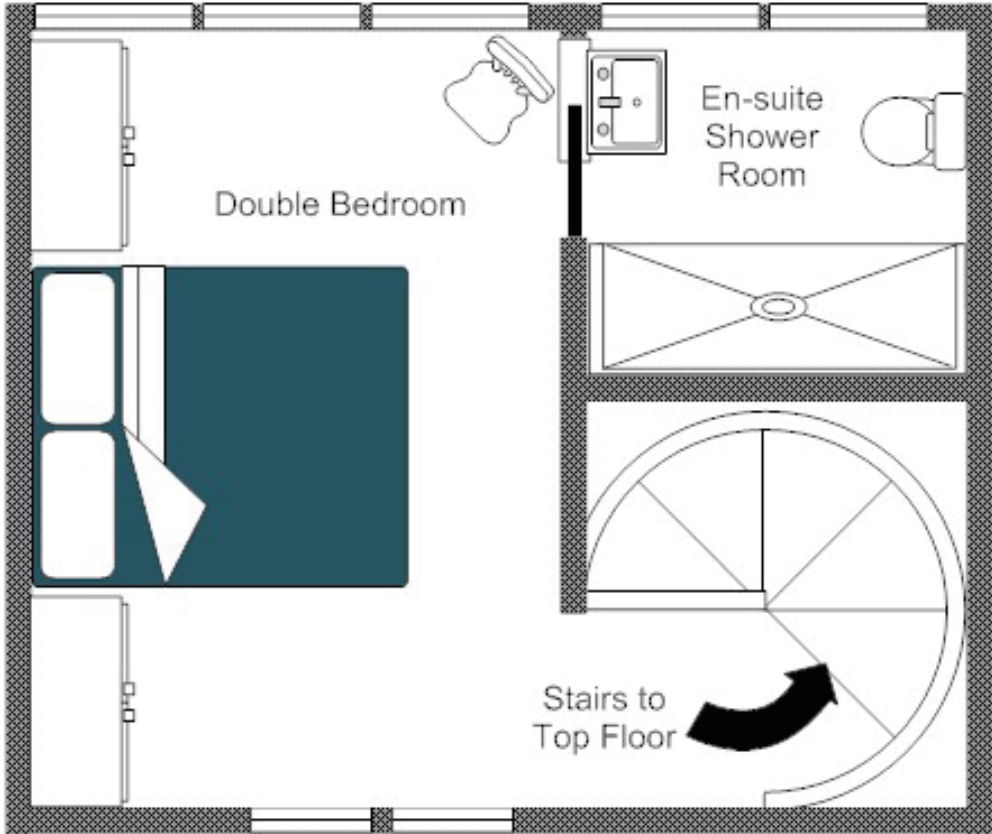
## GROUND FLOOR

- 1 twin/double bedroom (en-suite shower room)
- 1 bunk room (sleeping 3, private shower room)
- Living area/games room with small kitchen and bar area
- Sauna
- Indoor hot tub
- Showers



FLOOR PLAN TOP FLOOR

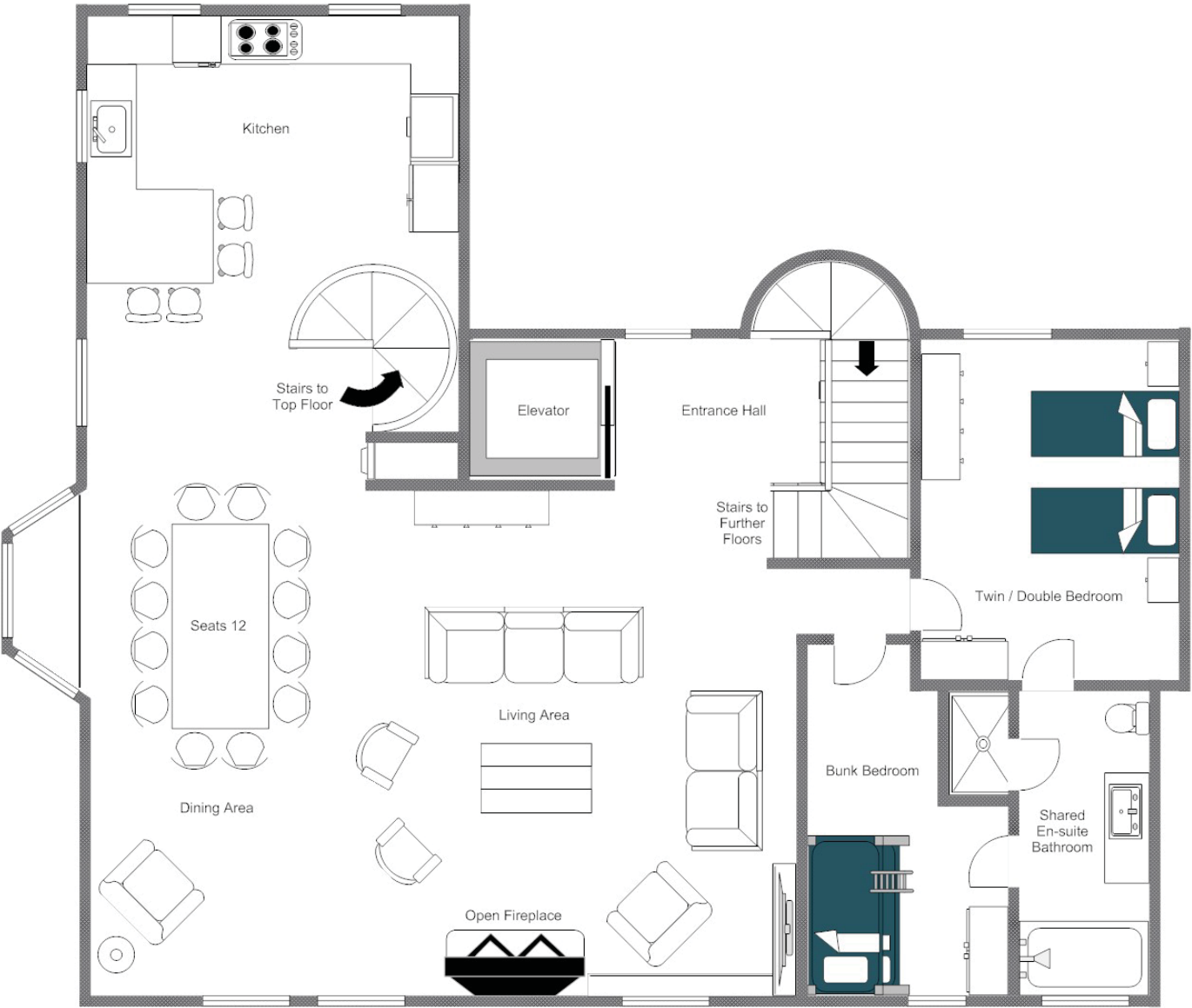
FOR ILLUSTRATION PURPOSES ONLY





FLOOR PLAN LIVING FLOOR (SECOND FLOOR)

FOR ILLUSTRATION PURPOSES ONLY



FLOOR PLAN ENTRANCE LEVEL (FIRST FLOOR)

FOR ILLUSTRATION PURPOSES ONLY





FLOOR PLAN GROUND FLOOR

FOR ILLUSTRATION PURPOSES ONLY





REDEFINING THE LUXURY CHALET EXPERIENCE







# LOCATION



REDEFINING THE LUXURY CHALET EXPERIENCE



Nestled in the exclusive L'Hameau development, the chalet is under 100m from the Le Rouge piste and the beginner nursery slopes.

#### PROXIMITY

Medran - 4 minute drive. Savoleyre - 2 minute drive.

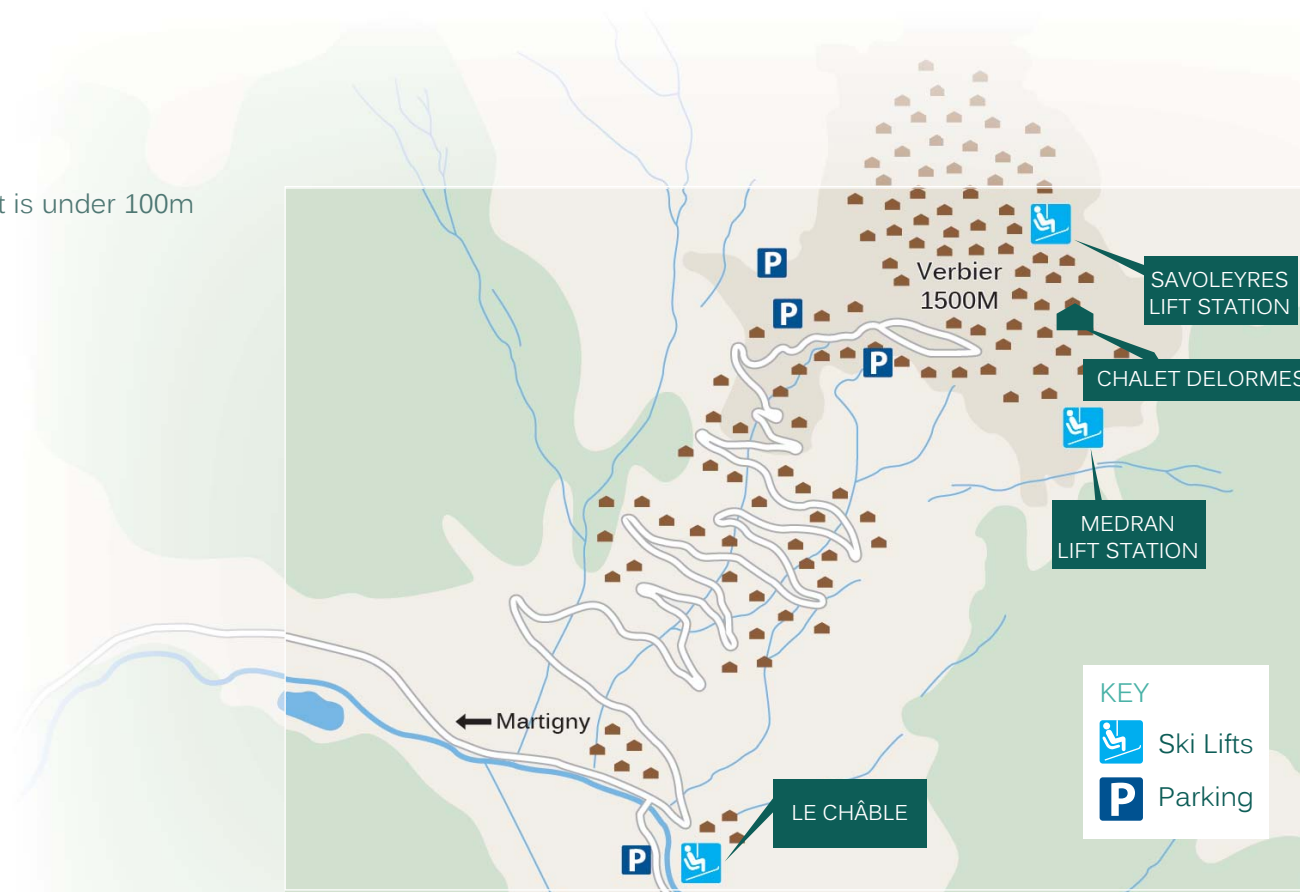
Place Centrale - 6 minute drive

#### GOOGLE CO-ORDINATES

46.1022713293942, 7.2342685441130925

#### DIRECTIONS

Arriving into Verbier, continue straight until you get to the traffic circle at Place Centrale. Take the third exit taking you past T bar on your right. Continue along the road until you reach traffic circle at Chalet d'Adrien/Savoleyres lift station, take the first exit on your right. Along this road, take the first right towards L'Hameau development, continue past the nursery slopes which will be on your right, the chalet is on your right past the turning for the L'Hameau car park.





REDEFINING THE LUXURY CHALET EXPERIENCE













bramble<sup>TM</sup>  
ski