

# CHALET LES ÉTRENNES

---

SWITZERLAND

VERBIER



# CHALET LES ÉTRENNES

VERBIER | Sleeps 12

alpine  
luxe



REDEFINING THE LUXURY CHALET EXPERIENCE



CHALET LES ÉTRENNES is a beautiful six-bedroom luxury chalet in Verbier. After an extensive renovation and expansion, this stunning new chalet was completed in summer 2017. The finish and level of craftsmanship throughout the chalet is second to none and every piece has been carefully selected to create a relaxing and luxurious atmosphere.

# DESCRIPTION



REDEFINING THE LUXURY CHALET EXPERIENCE



Brand new for the 2017/18 winter season, Chalet Les Étrennes is the epitome of style and sophistication.

Ideally located, tucked away on the south west-facing Savoleyres side, the chalet has sublime views encompassing the village below, the pistes of Verbier and the imposing Mont Blanc massif. The pistes are just a short chauffeured drive away or guests can take the complimentary bus service which stops at the end of the road (a 250m walk).

The four-story home sleeps twelve guests in 6 bedrooms making it a perfect mountain retreat for families and friends.

You enter the chalet on the ground floor into the entrance hall with the ski room directly ahead of you, where there is plenty of space for you to store skis and boots after a long day on the slopes.

Taking the stairs up to the first floor, you will find two tranquil twin/double bedrooms, one with a spacious en-suite bathroom and separate shower and the second bedroom with an en-suite shower.

Across the hallway from the bedrooms you will find the hammam, the ideal spot to rejuvenate and relax after a day on the slopes. Also on this floor is a private laundry room.

The second floor is home to the luxurious master bedroom suite. A true sanctuary, you will find a cool relaxing palette of creams and blues creating a haven of relaxation. There is a large dressing area, en-suite bathroom with separate shower, and enviable views from the super-king size bed. The French windows open out onto the large terrace which leads to the sunken outdoor hot tub.

There are a further three en-suite double bedrooms on this floor each with their own colour scheme and doors opening out on to the sun drenched south west-facing terrace.

Moving up to the third floor is where you find the chic and stylish living area, with double height vaulted ceiling and huge windows filling the room with the warm winter sunlight and offering breathtaking views over the mountain vista. Furnished with carefully selected pieces, accented with burnt orange and cool blue notes the living area has all the style and elegance you would hope for from a mountain retreat. You can enjoy pre-dinner cocktails around the roaring fire or cosy up in the reading corner wiling away the hours immersed in your favourite holiday read.

The third floor is also home to the open plan kitchen and dining room, again blessed with the double height ceiling, windows and spectacular views. This room masterfully combines sleek modern furnishings and finishes with natural materials to create a stylish space to enjoy meals prepared by our chefs. The cosy TV room and library is located on this floor and further reading and relaxation space can be found on the mezzanine looking over the living area. Finally through the large sliding doors, which open out onto the terrace, overlooking the landscaped gardens and wonderful outdoor hot tub.

The chalet is available on a catered or self-catered basis. The chalet normally comes with a dedicated driving service when sold on a fully catered basis.



# FACILITIES



REDEFINING THE LUXURY CHALET EXPERIENCE



## INTERIOR

- Sleeps 12
- 6 Bedrooms
- 9 Individual beds
- 6 Bathrooms
- 2 Additional WCs
- 14 Dining table seats
- 12 Living area seats

## APPLIANCES

- Cable TV
- Sonos
- TV/DVD
- Wifi

## WELLNESS AND RELAXATION

Hamam/steam room

Outdoor hot tub

South-facing terrace

Spa

## ENTERTAINMENT

- Bar
- Library
- TV room

## ADDITIONAL

- Cot/high chair available
- Heated boot warmers
- Private laundry facilities
- Private ski locker
- Wood burning fireplace





# LAYOUT



REDEFINING THE LUXURY CHALET EXPERIENCE



## TOP FLOOR

- Open plan living, dining room and kitchen
- Large terrace
- Cinema room
- Guest WC

## SECOND FLOOR

- Outdoor hot tub
- 1 x master double bedroom (en-suite bathroom, separate shower, TV, terrace access)
- 1 x double bedroom (en-suite shower room, terrace access)
- 1 x double bedroom (en-suite bathroom, terrace access)
- 1 x double bedroom (en-suite shower room, terrace access)

## FIRST FLOOR

- 1 twin/double bedroom (en-suite bathroom, separate shower)
- 1 twin/double bedroom (en-suite shower room)
- Hammam
- Laundry room

## ENTRANCE LEVEL (GROUND FLOOR)

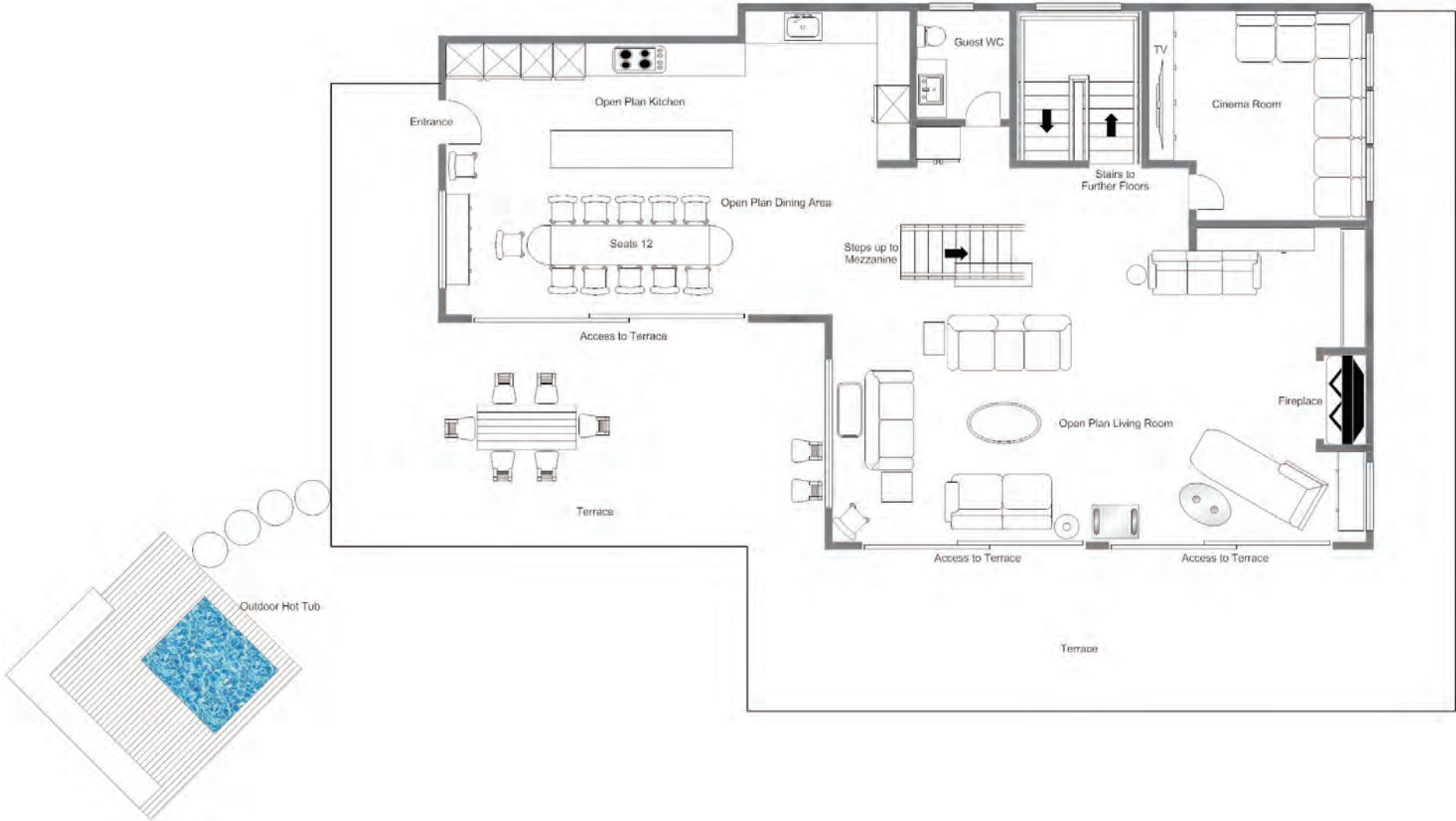
- Ski room
- Garage





FLOOR PLAN TOP FLOOR

FOR ILLUSTRATION PURPOSES ONLY





FLOOR PLAN SECOND FLOOR

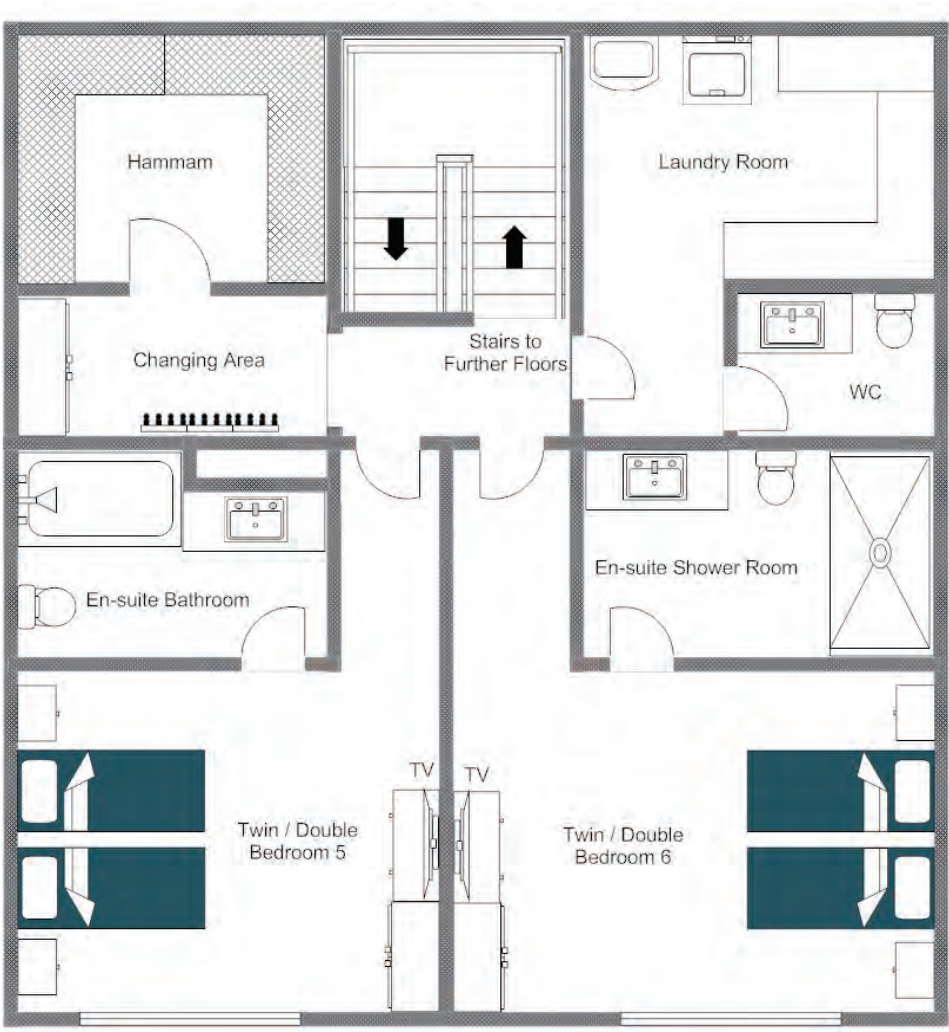
FOR ILLUSTRATION PURPOSES ONLY





FLOOR PLAN FIRST FLOOR

FOR ILLUSTRATION PURPOSES ONLY







REDEFINING THE LUXURY CHALET EXPERIENCE







LOCATION



REDEFINING THE LUXURY CHALET EXPERIENCE



#### ADDRESS

Verbier, Switzerland

#### PROXIMITY

Savoleyres - 2-minute drive

Carrefour - 2-minute drive

Médran - 5-minute drive

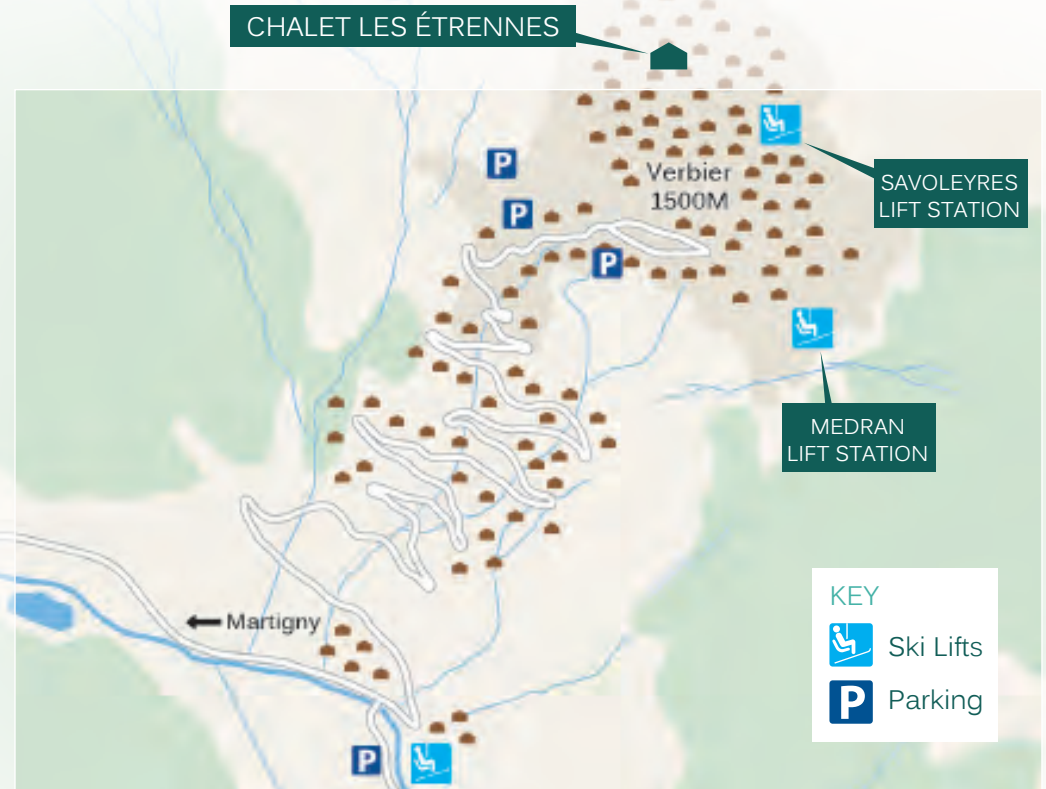
Place Centrale - 3-minute drive

#### GOOGLE CO-ORDINATES

46.106748, 7.227913

#### DIRECTIONS

Ideally located in a peaceful, private position just over 250m from the bus stop and a short drive from Carrefour and Savoleyres.







REDEFINING THE LUXURY CHALET EXPERIENCE











An aerial photograph of a mountain village in winter. The houses have snow-covered roofs, and the surrounding area is filled with snow-laden evergreen trees. The scene is framed by out-of-focus branches in the foreground. A semi-transparent rectangular box is centered over the image, containing the text 'bramble' and 'ski' stacked vertically, with a small 'TM' trademark symbol to the right of 'bramble'.

bramble<sup>TM</sup>  
ski