

CHALET TOUNDRA

SWITZERLAND

VERBIER

CHALET TOUNDRA

VERBIER | Sleeps 8+2

alpine
classic



REDEFINING THE LUXURY CHALET EXPERIENCE

CHALET TOUNDRA is a luxurious, stand-alone chalet ideally positioned on the south-facing side of Verbier near to the Savoleyres lift station. An ideal base for families or groups of friends, Chalet Toundra enjoys privileged views of the Petit and Grand Combin mountain ranges as well as the twinkling lights of Verbier below. Recently completed and spread over two spacious floors, Chalet Toundra sleeps up to ten guests in four bedrooms.

DESCRIPTION



REDEFINING THE LUXURY CHALET EXPERIENCE

Chalet Toundra is a luxurious, stand-alone chalet ideally positioned on the south-facing side of Verbier near to the Savoleyres lift station. An ideal base for families or groups of friends, Chalet Toundra enjoys privileged views of the Petit and Grand Combin mountain ranges as well as the twinkling lights of Verbier below. Recently completed and spread over two spacious floors, Chalet Toundra sleeps up to ten guests in four bedrooms.

Enter the chalet via the ground floor. An entranceway, with heated boot warmers and plenty of storage space, leads to the main sleeping area of the chalet. Three of the chalet's bedrooms are on the ground floor; a large double bedroom with en-suite shower room, a beautiful alpine-themed double bedroom, and a cozy children's bunk room. There is also a spacious bathroom on this floor.


The top floor of the chalet is home to the living and dining areas as well as the master bedroom, study, and an additional shower room with guest toilet. Framed by the large sliding glass doors, the open plan living and dining area's uninterrupted

views seemingly transport you onto Verbier's pistes. The sitting area focuses around a traditional wood burning fireplace, with lots of seating for the whole family. Enjoy your favourite tipple by the side of a crackling fire as a personal chef and host prepare for the evening's service. Dinner is served in the dining area which is separated from the kitchen by a large breakfast bar. Moving outside onto the large balcony, there is an excellent hammock and outside sofa from which to enjoy the views in the wonderful spring sunshine.

The master bedroom with TV has a beautiful en-suite bathroom. Also on the top floor is a study area, a large guest shower room and toilet, and a double bed on the mezzanine.

The chalet is sold on a catered or self-catered basis. When sold on a catered basis, the chalet normally comes with a 24-hour 4WD driving service. If taken on a self-catered basis, the complimentary bus service departs to Carrefour, Médran, and Savoleyres from within 50 metres of the chalet.

FACILITIES

The image shows a spacious, rustic-style interior of a chalet. In the foreground, a large wooden kitchen island with a grey countertop and a built-in induction cooktop is visible. Behind it, a dining table is set with glassware, plates, and a centerpiece of flowers. The room features high ceilings with exposed wooden beams and a vaulted section with large windows. A stone fireplace with a warm fire is on the right, and a comfortable sofa sits in front of it. The floor is made of light-colored wood, and the overall atmosphere is cozy and elegant.

REDEFINING THE LUXURY CHALET EXPERIENCE

INTERIOR

- Sleeps 8 + 2
- 160 square metres
- 4 Bedrooms
- 7 Individual Beds
- 4 Bathrooms
- 0 Additional WCs
- 10 Dining Table Seats
- 8 Living Area Seats

APPLIANCES

- TV/DVD
- Hi-Fi/CD player/MP3 player
- Wifi
- Apple TV

WELLNESS AND RELAXATION

- South facing balcony

ADDITIONAL

- Wood burning fireplace
- Private laundry facilities
- Private ski locker
- Cot/high chair available
- Heated boot warmers



LAYOUT



REDEFINING THE LUXURY CHALET EXPERIENCE

GROUND FLOOR

- 1 superking/twin bedroom (en-suite showeroom)
- 1 double bedroom
- 1 bunk bedroom (sleeps 4)
- 1 shared bathroom

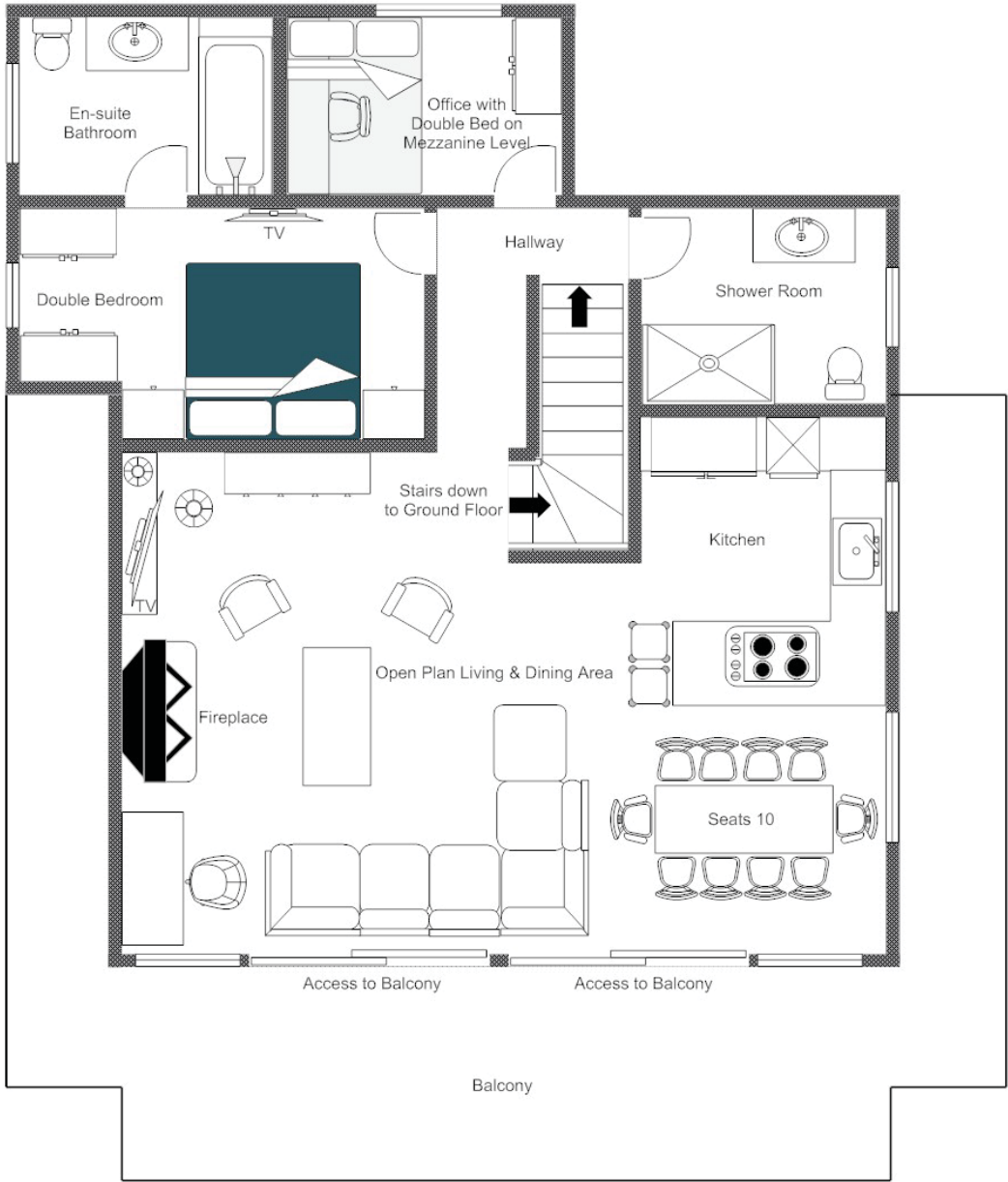
FIRST FLOOR

- Open plan living and dining room
- Kitchen
- 1 double bedroom (en-suite bathroom)
- 1 shower room
- 1 office with double bed on the mezzanine



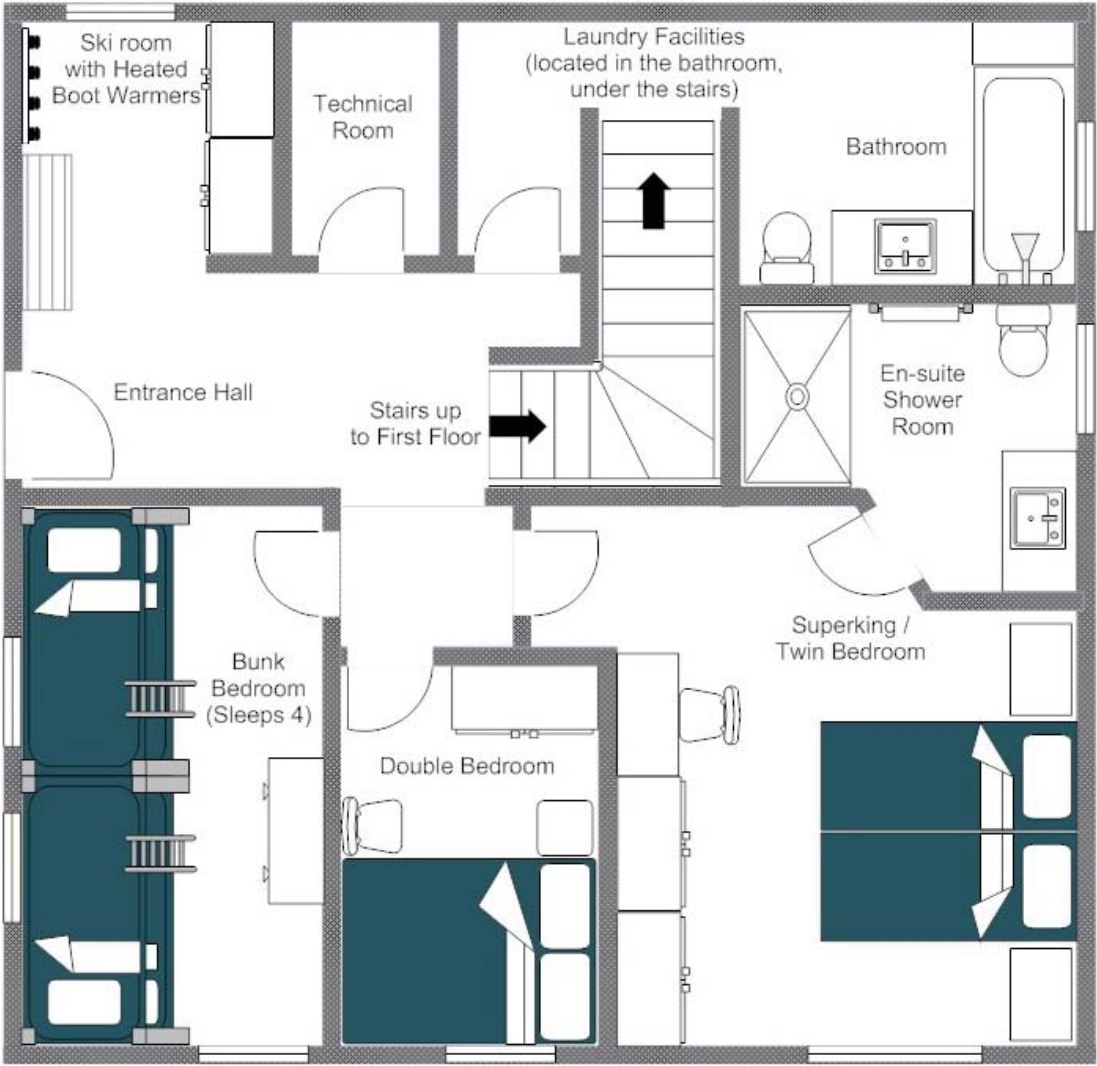
FLOOR PLAN UPSTAIRS

FOR ILLUSTRATION PURPOSES ONLY



FLOOR PLAN GROUND FLOOR

FOR ILLUSTRATION PURPOSES ONLY





REDEFINING THE LUXURY CHALET EXPERIENCE



LOCATION



REDEFINING THE LUXURY CHALET EXPERIENCE

An ideal spot for families, Chalet Toundra is located near Savoleyres and Carrefour with wonderful views across the valley. There is a complimentary bus service which departs every ten minutes from outside the chalet taking you to Médran, Carrefour, L'Hameau, and Savoleyres.

PROXIMITY

Savoleyres - 1 minute drive

Carrefour - 1 minute drive

Médran - 5 minute drive

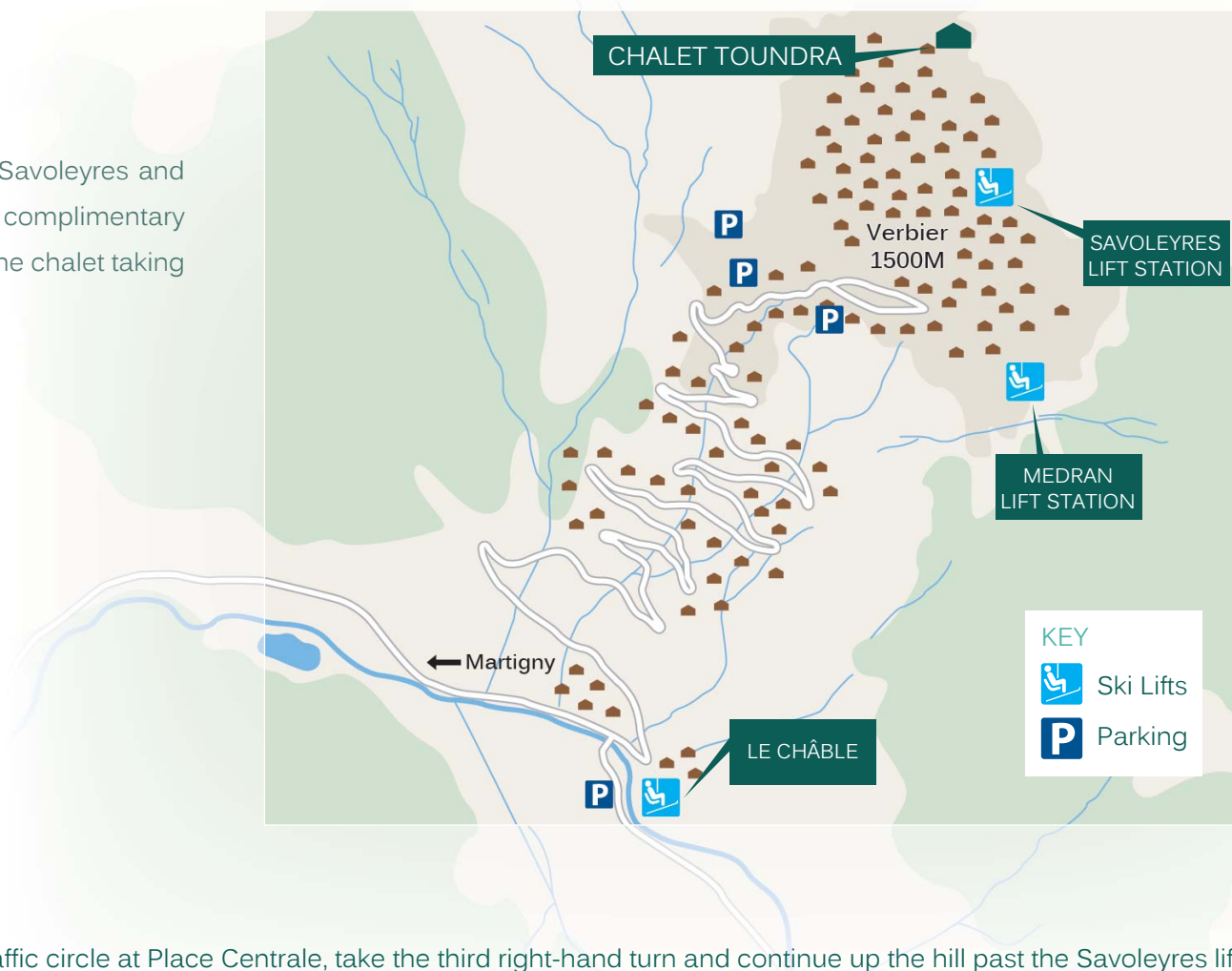
Place Centrale - 3 minute drive

GOOGLE CO-ORDINATES

46.106257, 7.228046

DIRECTIONS

Arriving into Verbier, continue straight until you reach the traffic circle at Place Centrale, take the third right-hand turn and continue up the hill past the Savoleyres lift. Take the first left-hand road, Chemin de Nitfortsie, and the chalet is the third property on the right-hand side.





REDEFINING THE LUXURY CHALET EXPERIENCE







brambleTM
ski