

DEUX RIVIERES

SWITZERLAND

VERBIER

DEUX RIVIERES

VERBIER | Sleeps 10 + 2

alpine
classic



REDEFINING THE LUXURY CHALET EXPERIENCE

DEUX RIVIERES is a bright and spacious six-bedroom penthouse apartment that occupies the top two floors of the Deux Rivières complex.

DESCRIPTION



REDEFINING THE LUXURY CHALET EXPERIENCE

Deux Rivières is a bright and spacious six-bedroom penthouse apartment that occupies the top two floors of the Deux Rivières complex.

Set in an incredible location, the property is secreted away in a quiet enclave in the very centre of the village, a short stroll from both the Place Centrale and the main Médran lift station.

Renovated in 2009, this extraordinary property feels more like a chalet than an apartment with its cathedral like ceilings, exposed beams, and sumptuous furnishings.

The lift takes you directly inside the large elegant entry hall with its floor-to-ceiling windows accessing the massive open plan living and dining area with stone fireplace.

The well-equipped kitchen opens onto the dining area.

The sumptuous master suite, measuring 50 square metres, is also located on the top floor. This room boasts a free-standing roll-top bath tub. A double bedroom (sleeping one or two) with en-suite shower room, a television room with mezzanine bedroom (sleeping one or two) and en-suite bathroom, a guest toilet, and a laundry room complete this floor.

Open stairs (caution for small children) lead down to the lower floor where a further three bedrooms are located. A large double room has an en-suite bathroom while a twin and double bedroom share a shower room. This floor has a separate entrance.

Guests have access on the lower floors to a shared ski room with ski lockers.

Two internal parking spaces are available at the property.

The chalet is sold on a catered or self-catered basis.

FACILITIES



REDEFINING THE LUXURY CHALET EXPERIENCE

INTERIOR

- Sleeps 10 + 2
- 320 square metres
- 6 Bedrooms
- 7 Individual Beds
- 4 Bathrooms
- 1 Additional WCs
- 10 Dining Table Seats
- 10 Living Area Seats

APPLIANCES

- TV/DVD
- Hi-Fi/CD player/MP3 player
- Ipod docking station

ADDITIONAL

- Wood burning fireplace
- Private laundry facilities
- Shared ski locker
- Cot/high chair available



LAYOUT



REDEFINING THE LUXURY CHALET EXPERIENCE

TOP FLOOR

- Open plan kitchen, dining and living area
- 1 master double bedroom (en-suite bathroom)
- 1 double bedroom (140cm bed sleeping 1-2, en-suite shower room)
- 1 mezzanine double bedroom (140cm bed sleeping 1-2, en-suite bathroom)
- Additional guest w.c.
- Private laundry room

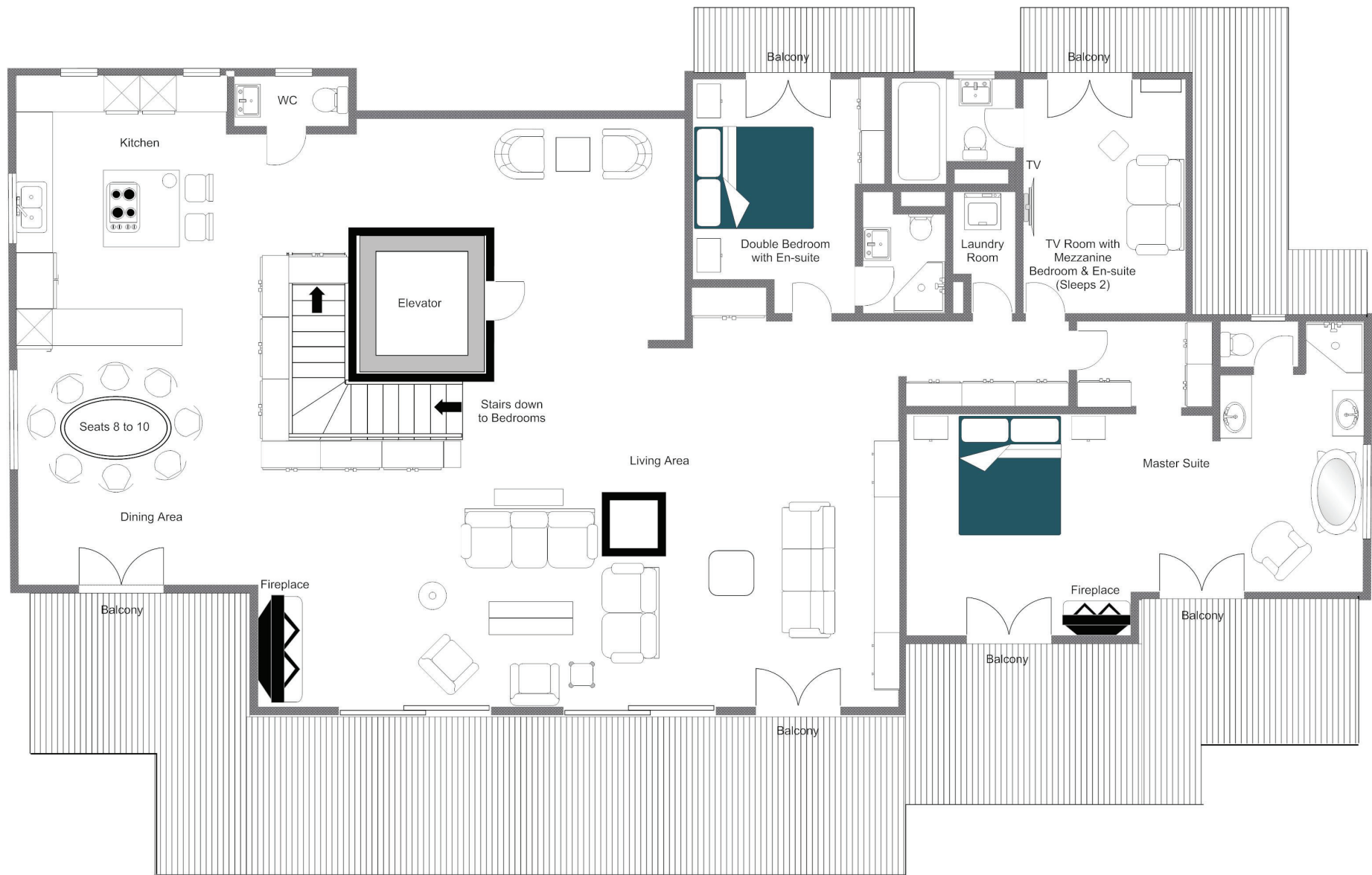
BOTTOM FLOOR

- 1 double bedroom (shared shower room)
- 1 twin bedroom (shared shower room)
- 1 double bedroom (en-suite bathroom)



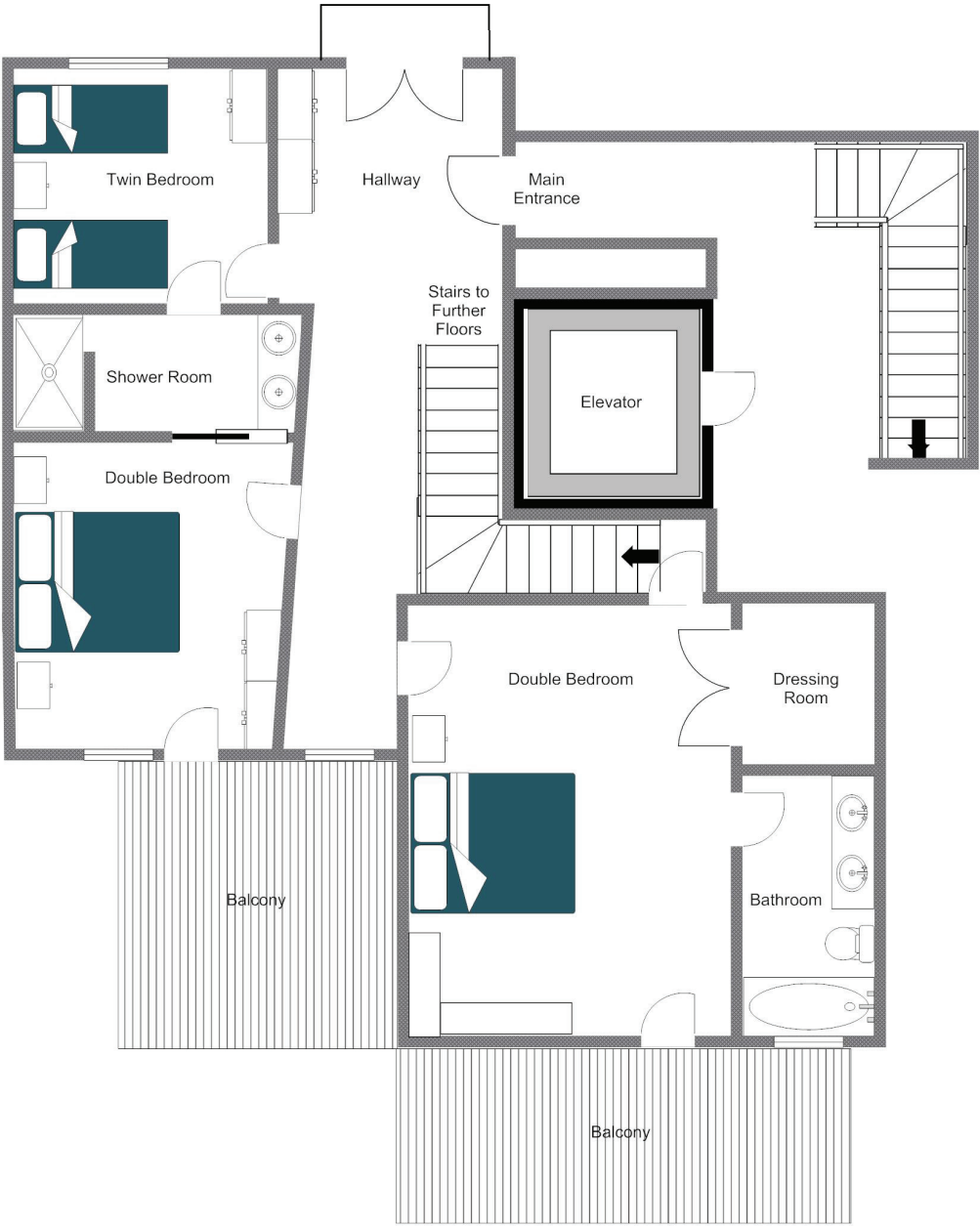
FLOOR PLAN TOP FLOOR

FOR ILLUSTRATION PURPOSES ONLY



FLOOR PLAN LOWER FLOOR

FOR ILLUSTRATION PURPOSES ONLY





REDEFINING THE LUXURY CHALET EXPERIENCE





LOCATION

REDEFINING THE LUXURY CHALET EXPERIENCE

Located in the centre of the village, a short walk to Medran and to Place Centrale.

PROXIMITY

Medran - 2 minutes walk.

Place Centrale - 2 minutes walk.

GOOGLE CO-ORDINATES

46.094527693205904, 7.2300439351959085

DIRECTIONS

Arriving into Verbier, continue straight until you reach the traffic circle at Place Centrale. Take the second exit and then immediately turn right towards Médran. At the Fer à Cheval, turn right onto Chemin de Médières. The garage is a blind entrance on the right after the road curves to the right.





REDEFINING THE LUXURY CHALET EXPERIENCE





An aerial photograph of a densely packed mountain village covered in snow. The houses have dark roofs and light-colored walls. A tall, white, cylindrical tower stands out among the buildings. The scene is framed by blurred evergreen branches in the foreground and background.

brambleTM
ski