

# NIDUS APARTMENT 4

---

A U S T R I A

LECH

# NIDUS APARTMENT 4

LECH | Sleeps 10



REDEFINING THE LUXURY CHALET EXPERIENCE

A LUXURIOUS FIVE-BEDROOM APARTMENT in one of  
Lech's most enviable locations



# DESCRIPTION



REDEFINING THE LUXURY CHALET EXPERIENCE



The sophisticated Nidus Apartment 4 is superbly located, close to the heart of Lech. It is just a short walk away from the nearest lift station and minutes from the charming village centre.

Inviting and stylish, the apartment has been exquisitely furnished by a leading interior design specialist. A stay here encapsulates everything you could wish for from a contemporary luxury ski home in Lech: state-of-the-art design, rich fabrics, chic furnishings and awe-inspiring views.

Nestled on the second floor of the prestigious Nidus building, the apartment sleeps up to ten people in five bedrooms. After a long day on the pistes, the apartment is ideal for relaxing with family or socialising with friends.

The master suite boasts a beautiful double bedroom with its own private dressing area and an en-suite bathroom which includes a separate shower and a private sauna.

There are two further bedrooms which can be made up as twins or doubles and share a private shower room. On the other side of the apartment is an additional twin or double bedroom which shares a private shower room with a wonderful children's bunk room. All of the bedrooms have been beautifully and individually finished with their own soothing tones and alpine touches.

The superb and thoughtfully-designed living area is home to large sofas and stylish seating. A decorative fireplace and subtle lighting ensure you feel cosy and warm during the snowy winter months.

Moving through the open plan living area to the wonderful dining area that seats ten people comfortably. As part of the living and dining area's stunning alpine backdrop, each window offers glorious views of snowy peaks and the enchanting village of Lech. For larger groups, when two apartments are taken in combination, 20 guests can dine together in this apartment. There are also large French windows that open out onto the beautiful terrace. Catching the afternoon sun, this is the perfect spot for sharing sundowners with family or friends.

When taken on a catered basis, the food is prepared in the professional kitchen area in the lower floor of the property and then served by your hosts in the comfort of your own apartment.

Guests have access to a wonderful shared ski room complete with boot warmers and the apartment features private laundry facilities.

The luxury Lech chalet is sold on a catered or self-catered basis.

The chalet normally has a shared driving service from 8:30am – 1:00am when sold on a fully catered basis. For those self-driving, the apartment has an underground parking space available upon request.

# FACILITIES



REDEFINING THE LUXURY CHALET EXPERIENCE



## INTERIOR

- Sleeps 10
- 211 Square metres
- 5 Bedrooms
- 9 Individual beds
- 3 Bathrooms
- 1 Additional WCs
- 10 Dining table seats
- 10 Living area seats

## APPLIANCES

- Apple TV
- TV
- Integrated sound system
- Wifi

## WELLNESS AND RELAXATION

- Sauna

## ADDITIONAL

- Corporate chalets
- Cot/high chair available
- Family-friendly chalets
- Heated boot warmers
- Private laundry facilities
- Shared ski locker
- Indoor Parking: 1





# LAYOUT



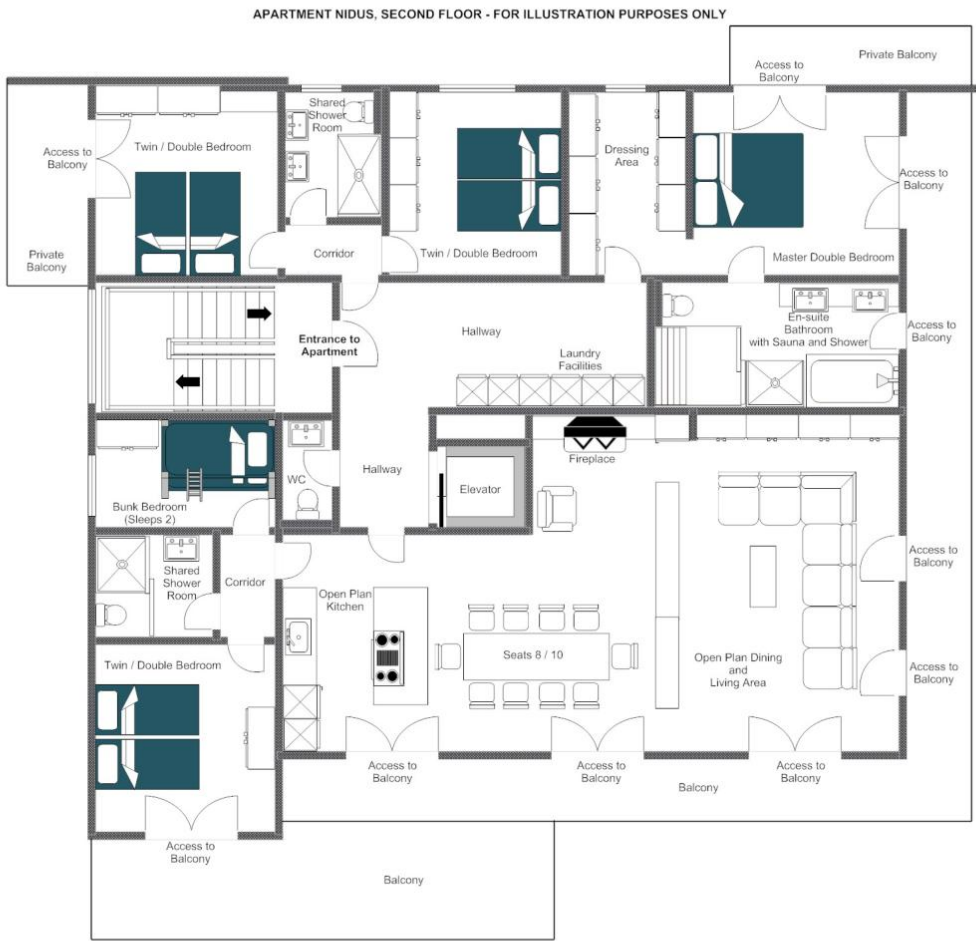
REDEFINING THE LUXURY CHALET EXPERIENCE



## SECOND FLOOR

- Open plan living and dining area
- 1 master bedroom (TV, safe, dressing area, en-suite bathroom with separate shower and sauna)
- 1 twin/double bedroom (TV, safe, terrace access)
- 1 twin/double bedroom (TV, safe)
- 1 shared shower room
- 1 twin/double bedroom (TV, safe)
- 1 shared shower room
- 1 children's bunk bedroom (sleeps 2)
- Guest WC











# LOCATION



REDEFINING THE LUXURY CHALET EXPERIENCE



## PROXIMITY

Schlosskopf chairlift - 6-minute walk Schlegelkopf lift - 10-minute walk

Village centre - 10-minute walk/3-minute drive/bus-ride (there is a bus stop located 1-minute walk from Nidus entrance)

## GOOGLE CO-ORDINATES

47.214837, 10.148945





REDEFINING THE LUXURY CHALET EXPERIENCE







The image is a composite of two night-time photographs. The upper half shows a majestic, snow-covered mountain peak with jagged ridges, set against a deep blue night sky filled with stars. The lower half depicts a cozy mountain village, likely in the Swiss Alps, with numerous chalets and houses glowing with warm, yellow interior lights. The village is nestled in a valley, with a prominent church steeple visible in the center. In the foreground, a smooth, snow-covered slope leads down towards the town. The overall atmosphere is serene and inviting, capturing the beauty of a winter night in a high-altitude location.

bramble<sup>TM</sup>  
ski